

Cook Islands

National Health Information Bulletin

Health Information Unit

Rarotonga Hospital

TE MARAE ORA
COOK ISLANDS Ministry of Health



2015

National Health Information Bulletin

2015

Published: September 2016

All data in this report is compiled by the Ministry of Health through its Health Information Unit. Any table or material may be reproduced and published provided acknowledgement is made of the source.

Compiled by:

HEALTH INFORMATION UNIT
RAROTONGA HOSPITAL
RAROTONGA, COOK ISLANDS

Staff: Tearoa Iorangi (Mr)

Alana Nanai (Miss)

Title: Manager

Officer

E-mail: tearoa.iorangi@cookislands.gov.ck

alana.nanai@cookislands.gov.ck

Website: www.health.gov.ck

Preface

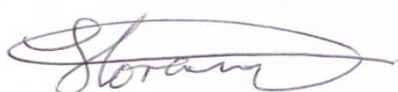
The Health Information Unit continues to provide key statistical information on the health status of the Cook Islands for the years up to 2015. This is the result of the continuous dedication invested by all health staff involved routinely in documenting their day to day work which contributes to the compiling of this useful report. The centralized electronic patient management database MedTech32 continued to be the main data source for the health indicators. . The establishment of the national core indicators enabled the Ministry to tailor the information in this report to cover the individual elements in producing these indicators.

The information contained in this report will be used by Te Marae Ora Cook Islands Ministry of Health (MOH) to broaden the needs for epidemiology and for public health needs, assessing progress towards the health outcome targets, formulating future plans and advice to the Minister of Health on how the health needs can be addressed.

It is the Ministry's aim to ensure that government and the wider community including International stakeholders, are provided with timely, reliable and quality health statistics.

For more detailed information, inquiry should be made through the Secretary of Health and the Director of Funding and Planning.

Meitaki Maata



.....
Mr Tearoa M.C. Iorangi
MANAGER HEALTH INFORMATION UNIT

2015 Summary Indicators

39% of Motor Vehicle crashes were Alcohol Related

15-24 YEARS
43%
Young riders ages are involved in the most alcohol-related motorcycle crashes.

4% Motor Vehicle Deaths

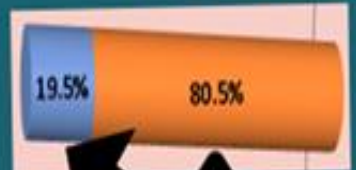
HEART DISEASE

is the main cause of death

47%



MORTALITY



Chikungunya 11 cases

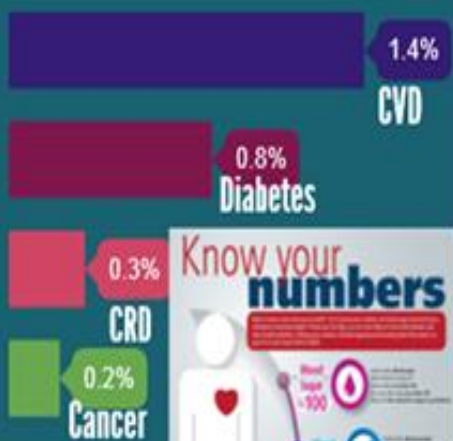


One doctor per 1,000 population



ONE IN SEVEN

OF THOSE DYING FROM INJURIES, POISONING AND OTHER EXTERNAL CAUSES DIED FROM SUICIDE



93% OF BIRTHS OCCURS IN RAROTONGA

Total Fertility Rate 2 per woman



NCD NEW CASES

HOSPITAL BED OCCUPANCY 23%

In 2005 it was reported about 420 ciguatera cases were seen. In 2015, the number has decreased to 41 cases.

CIGUATERA



Acknowledgements

The availability of health information is critical in allowing the Ministry of Health to ask and answer the right questions about health care in the Cook Islands. It is for this reason that the Health Information Unit (HIU) produces annual statistical bulletins which reflect health sector performance from the data received from the patient management system MedTech32 and various health facilities across the country. The Unit is constantly striving to improve its bulletin and related data products, in line with requests and feedback from various data users in the ministry, in country and abroad.

With the support of World Health Organisation (WHO) in 2013, the Ministry undertook an assessment of its Health Information System (HIS), which leads to the development of the first National Health Information Strategic Plan 2015-2019. A central activity within this plan was the development of the National Core Indicator set, which was finalised in 2014 and is ready for implementation this year (2015).

HIU extends its acknowledgement to WHO for the funding support towards the implementation of several activities highlighted in the plan enabling the Ministry to deliver trainings to the Outer Islands health staff in improving their data entry practices for quality and complete data.

Gratitude is also extended to all health staff who, assisted through their day to day duties in providing and documenting what is required for the compiling of this bulletin and the national core indicators.

A special acknowledgement to the following individuals for their contributions, as part of a training provided to develop a culture of information use among data collectors and users, enabling them to work with data collected for this report. These are;

- Lycee Teiotu, Charge Nurse, Maternity Ward
- Cook Islands School of Nursing students
 - Ake Teiotu – births and fertility
 - Florence Mataio – notifiable diseases
 - Maraea Kimi – morbidity and referrals
 - Ngatupuna Tauraa – non communicable diseases
 - Rosaleen Purea – transport crashes
 - Toa Pole – mortality
 - June Punua – outpatient services

*Participants at the
Data Analysis Workshop
Held in Rarotonga, May 2016
In collaboration with WHO*



Table of Contents

Preface	iii
Acknowledgements	v
Introduction	7
Health information system	8
Data Sources	9
<i>Medtech32</i>	10
Population	11
Births	13
<i>Live births</i>	13
<i>Type of deliveries</i>	14
<i>Crude birth rates</i>	15
<i>Fertility</i>	17
Notifiable diseases	18
<i>Top five diseases</i>	18
<i>Ciguatera poisoning</i>	18
Morbidity/disability	19
Non Communicable diseases	20
<i>Cancer</i>	20
Sexually Transmitted Infections	22
Transport crashes	23
Mortality	24
<i>Causes of death</i>	25
Health Services	27
<i>Facilities</i>	27
<i>Referrals</i>	28
<i>Outpatient Services</i>	29
<i>Dental Services</i>	30
<i>Family Planning</i>	30
Annex 1: Listing of tables	31
Annex 2: Life Tables	59
Annex 3: Core Indicator Summary	60

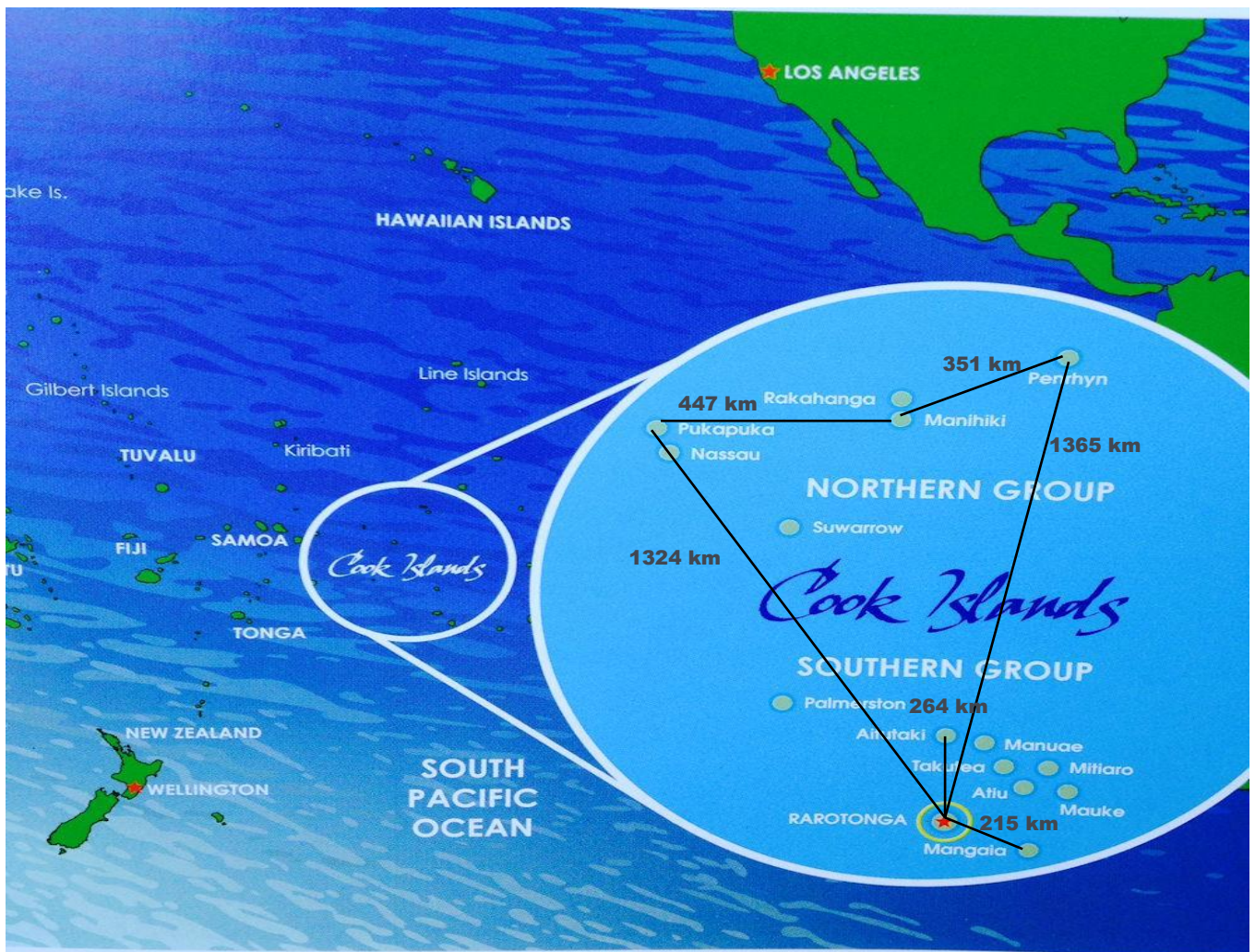
Introduction

Cook Islands

The Cook Islands is a country made up of 15 islands and atolls scattered over 2 million km² of the Pacific Ocean. The islands are located within 8 and 23 degrees south and between 156 and 167 degrees west. Such distances over the wide ocean linking these small island populations is imposing challenges to the development of transportation and communication systems.

The islands are named after Captain James Cook who visited them in 1773 and 1777. In 1888, the Cook Islands became a British protectorate and were transferred to New Zealand in 1901. In 1965, the Cook Islands chose to become self-governance in free association with New Zealand. The Cook Islands governed by a Prime Minister who is the leader of the majority party in the legislature, and the legislature is elected by popular vote.

The major economic activities in the Cook Islands are tourism, fishing, agriculture and financial services. There were economic troubles in 1996-1997 but were resolved through a programme of reforms including public service, public asset devolvement and economic strengthening and stimulation, supported largely by New Zealand and the Asian Development Bank.



Health information system

The Cook Islands has an established health information system (HIS), which is producing an adequate amount of information for use in decision-making in planning. The primary health management information system is MedTech32. It offers a relatively user-friendly platform for health workers to enter and access patient information from all islands. The system allows for basic information for many hospital activities including daily recording of patient management, in-patient admission, transfer and discharge; outpatient case registrations, invoicing and consultations; surgery details; special clinic services; laboratory services; prescription records; radiology services; discharge planning, pregnancy and birth records; post natal follow ups; immunization records; oral health; and death registrations.

Health facilities on the Te Pa Enuā (Outer Islands) are able to connect to MedTech32 via the internet providing, an important information 'bridge' back to the central Ministry of Health on Rarotonga.

All of the remaining information systems are paper based. This includes data from the public health on communicable disease programs and surveillance, and community health nursing. Information from recent surveys and on-field services is also paper-based and not integrated into MedTech32. But future plans are to get these data electronically stored.

HIU continued to use the International Statistical Classification of Diseases (ICD10) to code its morbidity and mortality data (that is the underlying cause of death as certified by a Medical Officer or Nurse Practitioners in some of the Outer Islands). The Mortality tabulation list 1 with 103 conditions or groupings is used in the Cook Islands for the coding of its underlying causes of death.

Data Sources

There are several indicator sets in use in the Cook Islands and many are not completely compatible due to differences in indicator definitions, hence 20 national core indicators were developed to give a broader picture of health, and the operation of the Ministry of Health activities identified in the National Health Information Strategy 2015-2019. Such activities include capacity building with certifiers and coders to reduce the proportion of deaths coded to ill-defined causes; and to improve on completions of several specifically designed MedTech32 templates, to become the main data source register and act as the main data collection tools as well for most of these indicators. These are specifically the;

- Outpatient triaging & cardiovascular risk assessment (CVR1)
- NCD register (NCDREG)
- Cancer (CANCER)
- Fish Poisoning (FISH)
- Dengue-Zika-Chickungunya (DENZIK)
- Syndrome (SYND) - for acute fever & rash, diarrhea, prolonged fever and influenza like-illness (ILI)
- Admission (ADM)
- Discharged (DIS)
- Death (D)
- Injury Surveillance (CIIS)
- Road Traffic accident (MVA)
- Baby birth details (BIRTH)
- Mothers details (BIRTH2)
- Outpatient Stats (OPD)
- OPD Triage Template (TRIAGE)
- Body Mass Index (BMI)
- Patient Referral NZ (REFER)
- Patient Referral OI (REFOI)

Furthermore, through the disease classifications for all patients consulted at any of the health facility in the Cook Islands.

Limitations

Data in this bulletin does not include;

- Births and deaths of patients referred overseas
- Patients referred and living overseas for chronic conditions
- Non Cook Islanders
- Those lost in June 2014 to May 2015 due to a MedTech32 problem experienced but for the following areas only:
 - Notifiable diseases
 - Morbidity classifications
 - Outpatient consultations

Medtech32

This is a highly modular fully featured practice management system. Medtech32 provides the stability required to maintain the integrity of your data. It features a very stable database has become integral in optimizing the efficiency of many medical practices and can be utilized in both primary and secondary health care environments.

Its major core functionality includes;

- Demographics – records containing extensive information on patient demographic
- Clinical Notes – covers medications, disease classifications and electronic receipt of pathology and radiology results, an outbox
- Recalls and Screening – templates necessary for any special requirements, as well as the basic recalls including: hypertension, cervical screening, and diabetes. The recall function vastly increases practice efficiency and the facility is available to automatically generate recall letters
- Prescribing
- Accounts – provides comprehensive accounting functions and is able to generate a wide range of standard and customized reports

And also provides other functions such as;

- Health Assessment and Management Tools – includes a cardiovascular risk assessment tool, growth charts, and Ministry of Health treatment guidelines
- A Drawing Tool for Anatomical References
- Attachments Manager – able to link files directly to an individual patient record
- Interface with Laboratory Results – to receive electronic lab results that can then be charted and graphed
- Geocoding for Demographic Information
- Query Builder – useful reporting tool that provides the ability to interrogate most of the data that has been entered into MedTech32
- Immunisation – interfaces with the national immunization register
- Interfacing with Third Party Applications

Population

The total population of the Cook Islands as reported in the 2011 Census is 17,794. This number includes both residents (people permanently living in the Cook Islands) and visitors that were present during the time of the census, but does not include those Cook Islands residents that were away during that time. This population count reflects a decline of 1,775 people from the 2006 census (19,569). For resident Cook Islanders a total of 14,977 were reported in the 2011 census with 7,490 males and a few less with 7,487 females.

71 percent of this population is residing on the main Island Rarotonga with 22 percent living on the Outer Islands of Aitutaki, Atiu, Mangaia, Mauke and Mitiaro, whereas the rest (7 percent) are living in the Northern Islands.

While the majority of people are living in Rarotonga, almost 17 percent of those aged 60 years and more preferred to live back in the Southern group Islands of Aitutaki, Atiu, Mangaia, Mauke and Mitiaro, more than those living on Rarotonga with only 13 percent. For those less than 15 years, over 38 percent are living back in the Northern Group Islands of Palmerston, Manihiki, Rakahanga, Pukapuka, Nassau and Penrhyn, more than those living on Rarotonga with almost 24 percent.

Table 1: Populations by region and age groups, Cook Islands: 2011

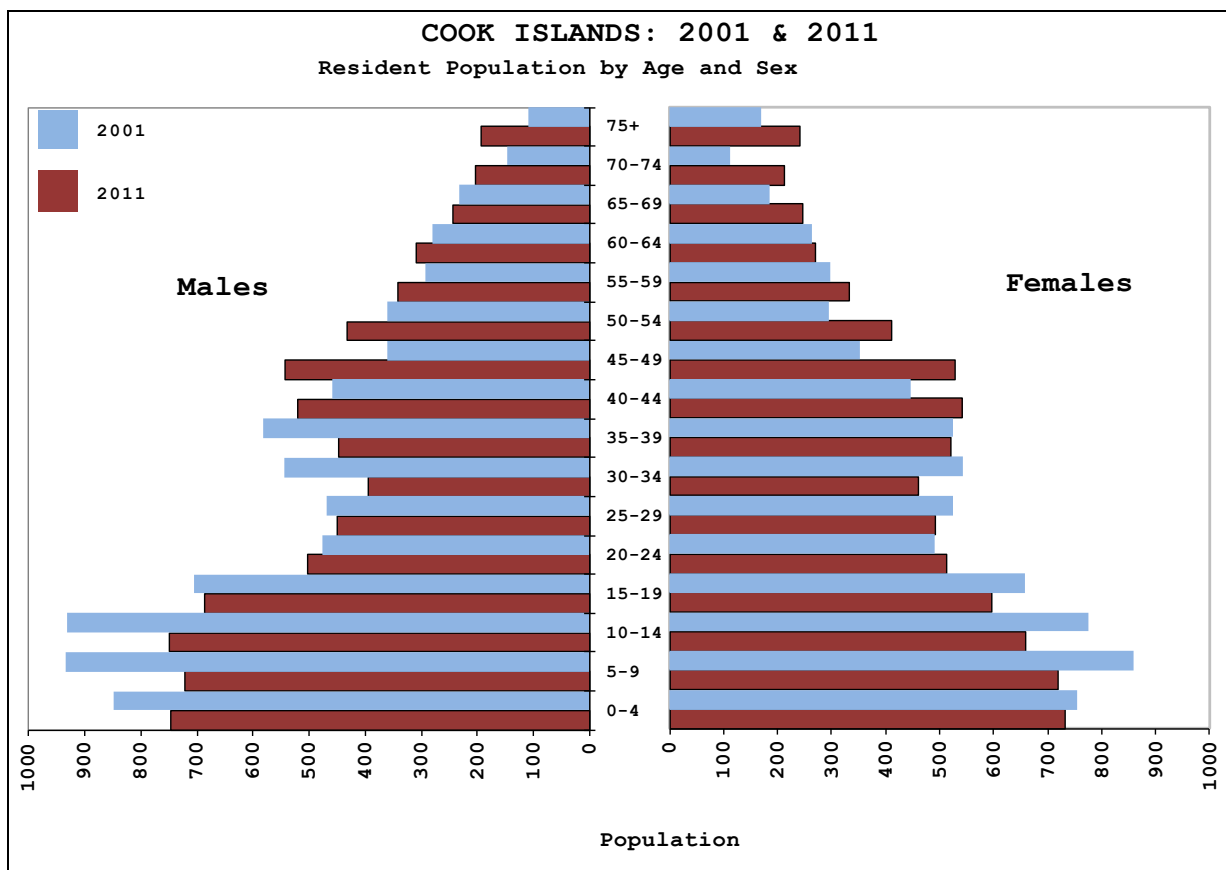
Region	Age Group				Total
	0-14	15-44	45-59	> 59	
	Total Population				
COOK ISLANDS	4,627	7,584	3,204	2,379	17,794
Rarotonga	3,119	5,904	2,395	1,677	13,095
Southern Group excl. Raro	1,081	1,275	629	601	3,586
Northern Group	427	405	180	101	1,113
	Resident Population				
COOK ISLANDS	4,332	6,130	2,590	1,925	14,977
Rarotonga	2,869	4,594	1,836	1,273	10,572
Southern Group excl. Raro	1,036	1,131	574	552	3,293
Northern Group	427	405	180	100	1,112
	Percentage Distribution - Total population				
COOK ISLANDS	26	42.6	18	13.4	100
Rarotonga	23.8	45.1	18.3	12.8	73.6
Southern Group excl. Raro	30.1	35.6	17.5	16.8	20.2
Northern Group	38.4	36.4	16.2	9.1	6.3

Population pyramids, sometimes called an age picture diagram are often viewed as the most effective way to graphically depict the age and sex structure of a population.

As shown in **Figure 1** below is the Cook Islands population pyramid for 2001 and 2011 census. It is obvious that there is a decline in the population of the Cook Islands in this ten year period among the young age groups from 0-39 years. There is also the shift of the 15-39 year age groups, showing the continuous sign of outward migration at the young ages. These are the 5-29 cohort groups in 2001 that would have been in the 15-39 cohorts. The main incentives for the move could be for further education, higher wages and more employment opportunities overseas.

It should also be noted that a lot more of our older population is living more than 65 years indicating a shift to a decade of healthier and active population. This is an increase from six percent in 2001 to nine percent in 2011 census.

Figure 1: Population pyramid - resident population



Births

Live births

The total number of births occurring in the Cook Islands continued to decline over the last ten years (2006-2015) as seen in the table below. Between these periods, total births varied between 320 in 2006 and 218 in 2015. Sex distribution for the last three years does not have much difference in number, and had a sex ratio of one male to one female.

Table 2: Number of Live Births, Cook Islands: 2006–2015

Year	2006	2007	2008	2009	2010	2011	2012	2013	2014	2015
Males	161	157	163	147	137	152	163	133	118	107
Females	143	163	130	133	152	132	129	128	105	111
Total	304	320	293	280	289	284	292	261	223	218

Due to fluctuations in the annual number of births in the Cook Islands, a three year rolling average was used to smooth out these fluctuations so that at any given point that may be unusually high or low does not distort overall trends. Based on the trends shown in **Figure 2**, it is evident that the overall trend in the number of births is consistently declining. The decline shows the continuous outward migration of the people as reported in the 2011 population census, with most of the Islands showing a decline since the 2001 census.

Figure 2: Three year rolling average number of births Cook Islands: 1999–2015

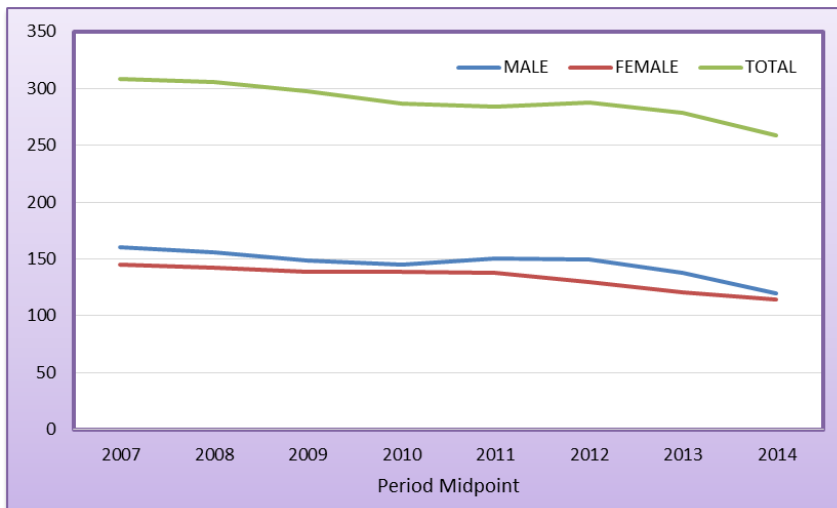


Table 3: Births by year

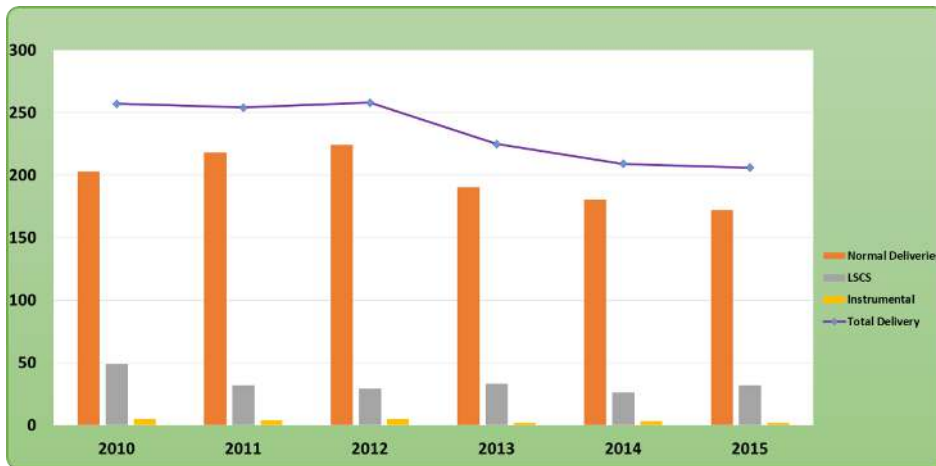
YEAR	Live Births	
	Number	3 Year Average
2006	304	
2007	320	306
2008	293	298
2009	280	287
2010	289	284
2011	284	288
2012	292	279
2013	261	259
2014	223	234
2015	218	
Total	2,764	276

A total of 2,764 live births were reported from 2006 to 2015, more of these births were males (2,580) compared to females (2,359), giving a sex ratio of 109 males for every 100 females born. The average number of babies born in the Cook Islands over this last 10 years had gone below three hundred with 276 babies per year.

Type of deliveries

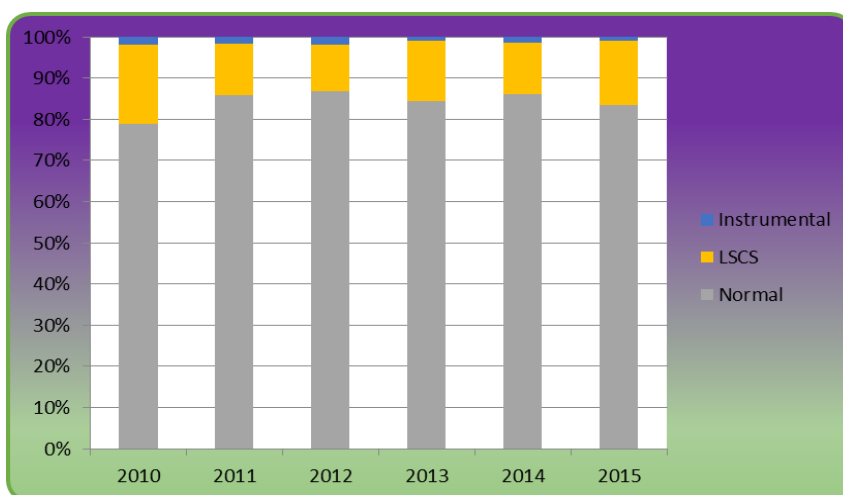
The total number of births delivered at the Rarotonga Hospital (**Figure 3**), for the past six years (2010-2015) recorded the highest of 258 in 2012 and the lowest of 206 in 2015, highlighting the continuous decline in the number of births on Rarotonga.

Figure 3: Deliveries at Rarotonga Hospital: 2010–2015



In **Figure 4**, the mode of delivery at the Rarotonga Hospital by normal delivery is from 79 percent to almost 84 percent between 2010 and 2015 with a caesarean section (c-section) rate of almost 16 percent in 2015.

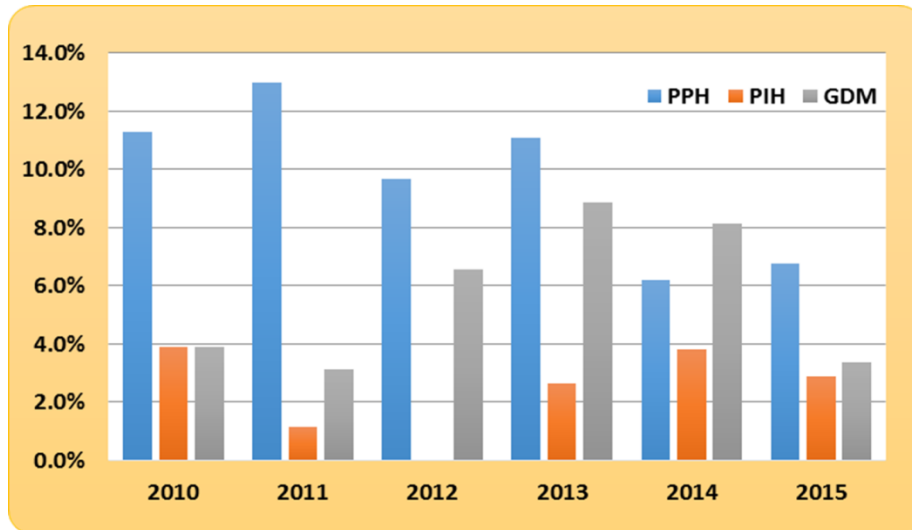
Figure 4: Types of birth delivery (%), Rarotonga: 2010–2015



YEAR	Normal	LSCS	Instrument
2010	79.0%	19.1%	1.9%
2011	85.8%	12.6%	1.6%
2012	86.8%	11.2%	1.9%
2013	84.4%	14.7%	0.9%
2014	86.1%	12.4%	1.4%
2015	83.5%	15.5%	1.0%

The most common pregnancy related complications during the last 5 years are Gestational Diabetes (GDM) during the pregnancy and postpartum hemorrhage (PPH) as the leading cause post delivery. There is an increase in the number of Gestational hypertension cases (PIH) but MOH data of gestational hypertension cannot differentiate the time of onset of the disease whether it is during pregnancy or after the delivery.

Figure 5: Common complications associated to pregnancy (%), Maternity ward Rarotonga: 2010 – 2015



Crude birth rates

Crude birth rate (CBR) depicts the number of live births occurring in a year per thousand populations. As illustrated below, it shows a decline from almost 21 births in 2006 to about 17 births in 2015.

Figure 6: Crude birth rates, Cook Islands: 2006–2015

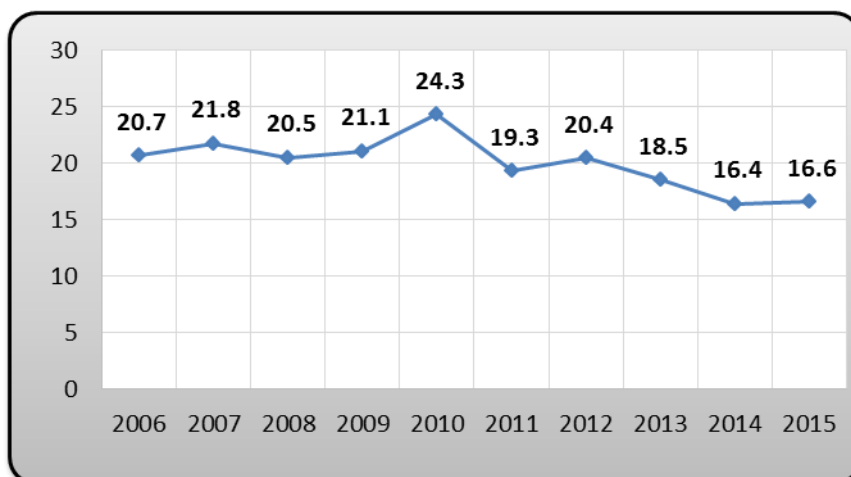
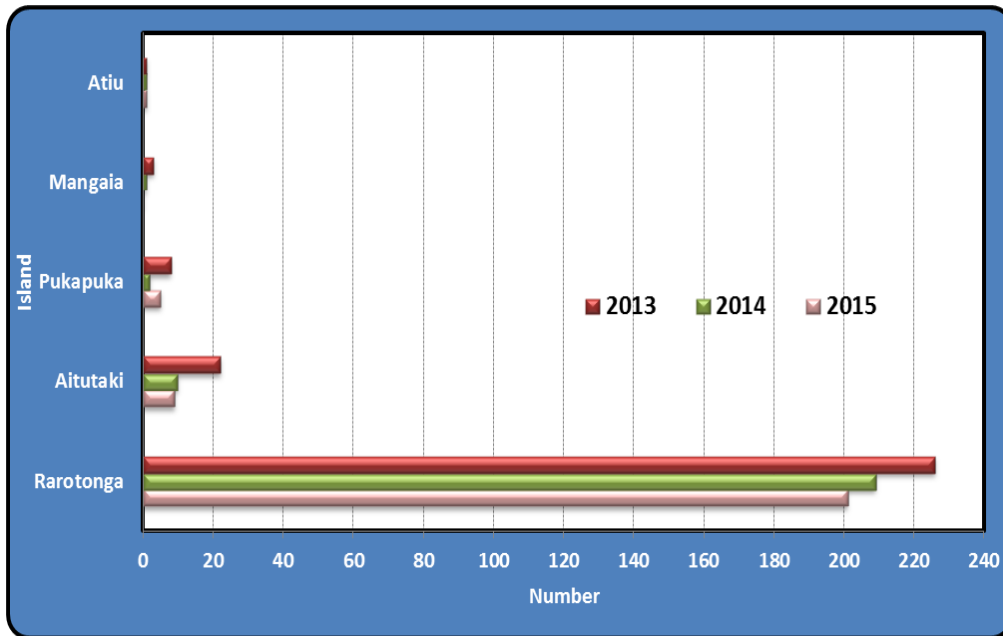


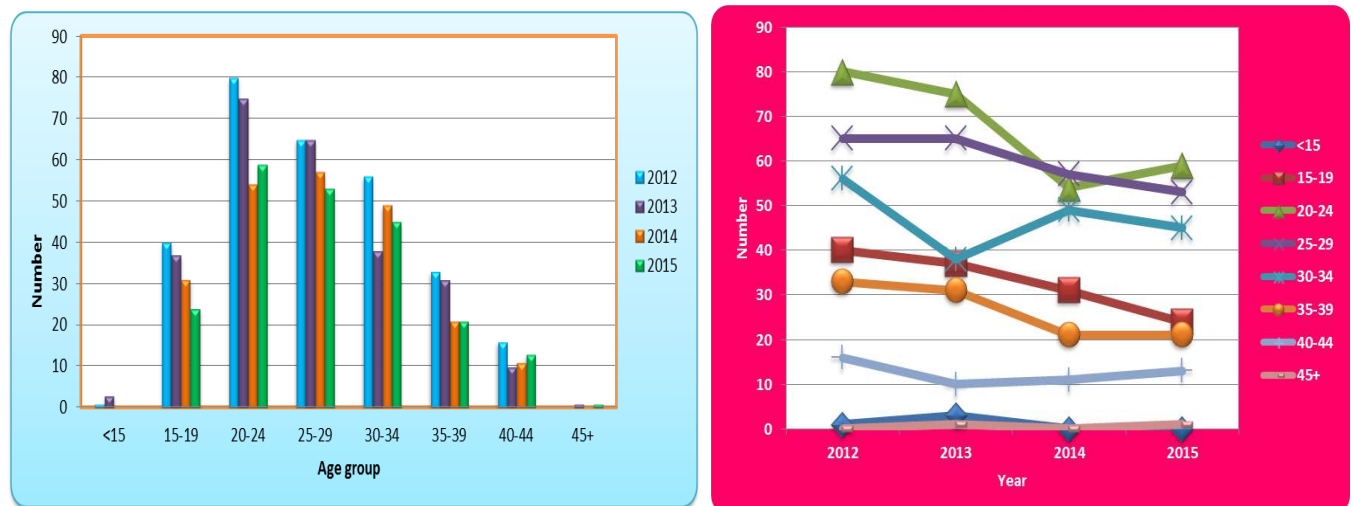
Figure 7 below shows the number of mothers who have given birth in the Cook Islands for the last three years (2013-2015). It shows the main island of Rarotonga recording the most, as expected with the most populated island and where mothers do attend for safe delivery of their babies, but the number has continuously declined from over 220 in 2013 to around 200 mothers in 2015.

**Figure 7: Number of mothers given birth by Island
Cook Islands: 2013–2015**



Mothers in the age group 20-24 years reported to have the highest number for deliveries, accounting for 80 cases in 2012 to 59 in 2015, indicating a downward trend and also seen in all other age groups within the last four years (2012-2015).

Figure 8: Number of mothers given birth, Cook Islands: 2012–2015



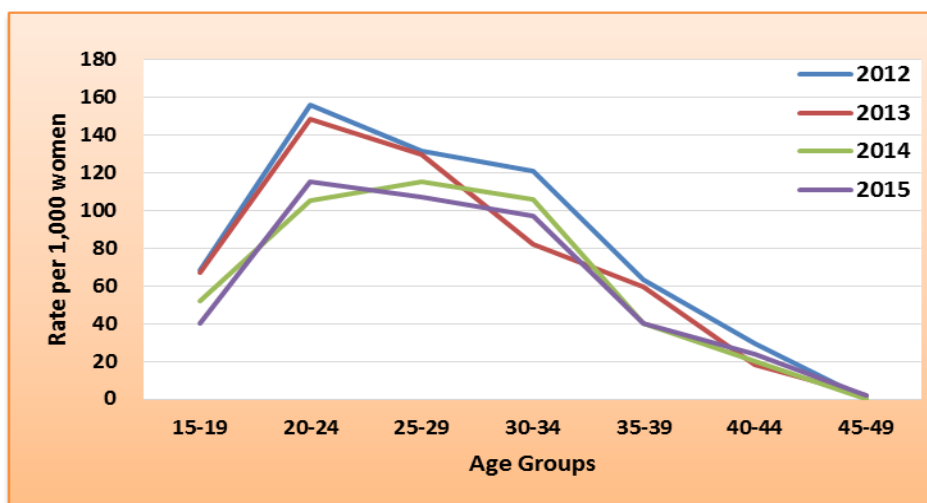
Fertility

Total fertility rate (TFR) is a measure of the average number of children a woman would give birth to during her lifetime if she were to pass through her child-bearing years (15-49 years) experiencing the present day age specific fertility rates.

In **Figure 9**, the highest number of births in the Cook Islands for the past 2 years occurs among mothers aged between 20 to 24 years in 2015, and among mothers aged between 25 to 29 years in 2014. It is evident that fertility among 20 to 29 year old women is declining in 2015 compared to prior years.

The number of births to adolescent mothers aged 15 to 19 is showing a decline from 69 per 1,000 in 2012 to 40 per 1,000 in 2015. This could be due to easily accessible contraceptive services.

Figure 9: Age-specific fertility rates for Cook Islands: 2012-2015



TFR (**Figure 10**), for the Cook Islands over the past ten years showed a decline from three births per woman to two.

Figure 10: Total fertility rate, Cook Islands: 2006-2015

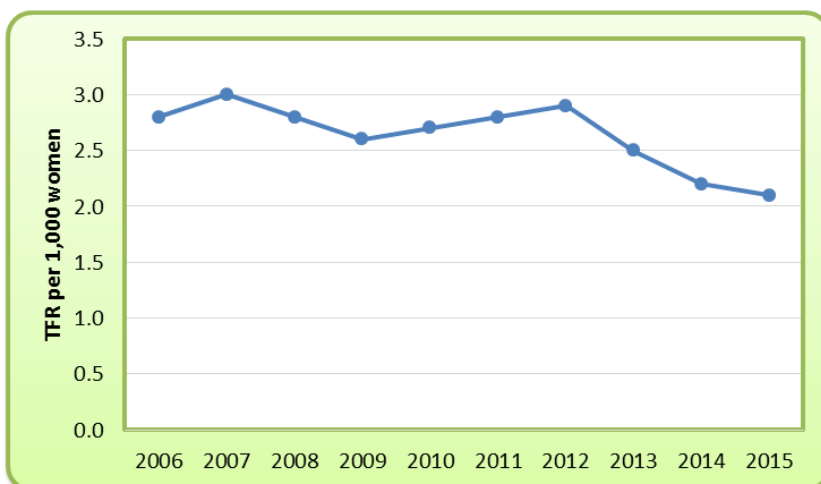


Table 4: TFR by year

YEAR	TFR
2006	2.8
2007	3.0
2008	2.8
2009	2.6
2010	2.7
2011	2.8
2012	2.9
2013	2.5
2014	2.2
2015	2.1

Notifiable diseases

A notifiable (reportable) disease is any disease that is required by law to be reported to government authorities. The collation of information allows the authorities to monitor the disease, and provides early warning of possible outbreaks. Note that these cases are for clinically diagnosed only.

Top five diseases

The top five infectious diseases reported in the Cook Islands between 2011 and 2015 are: skin sepsis, gastroenteritis/diarrhea, pneumonia, bronchitis and influenza & viral illness. Skin sepsis reported the highest number of cases in 2013 with a significant drop in 2014 and continued in 2015.

Figure 11: Top five notifiable diseases, Cook Islands: 2011–2015

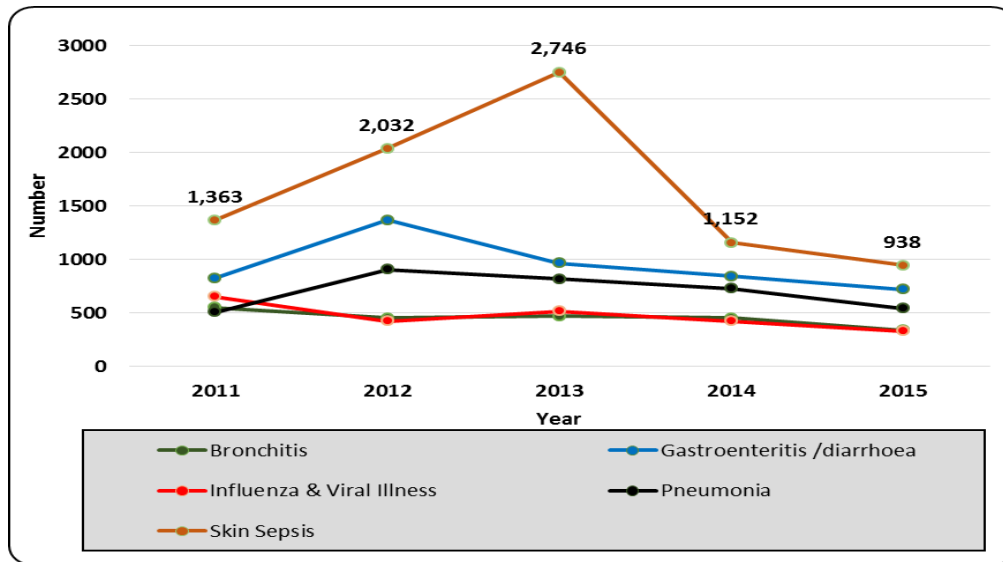
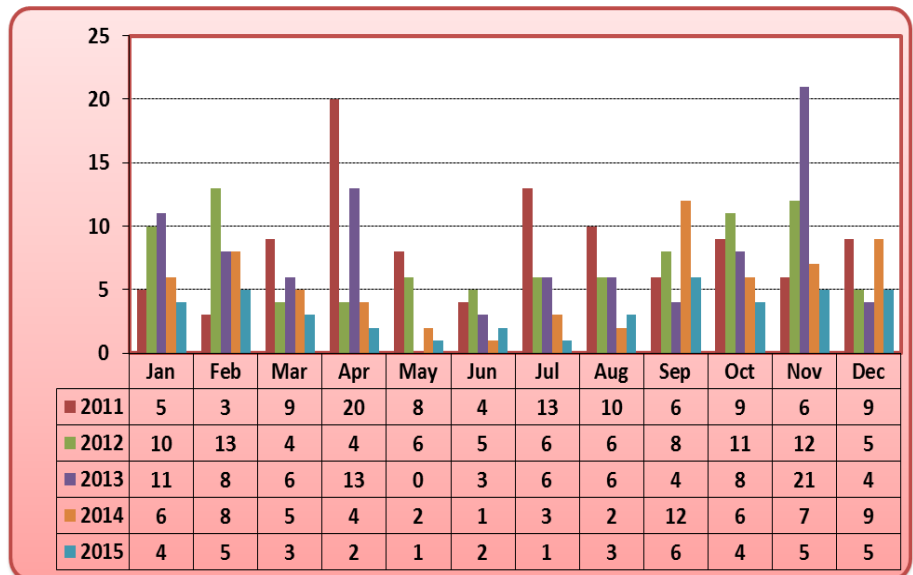


Figure 12: Ciguatera poisoning cases by month, Cook Islands: 2011–2015

Ciguatera poisoning

Ciguatera (fish poisoning) is a food borne illness caused by eating fish that is contaminated by ciguatera toxin. These toxins are commonly found among large reef fishes. The toxin is harmless to the fish however when consumed by human being, they become poisonous and can cause nausea, pain, cardiac and neurological symptoms. A monthly average of 6 cases was reported in 2014 and declined to 3 in 2015.



Morbidity/disability

For the last three years the main cause of admissions in the Cook Islands were patients with Heart diseases (2013-2015) whereas Injuries, poisoning & other external causes recorded the highest in 2014. Note that the numbers reported are for cases of morbidity seen and not the number of patients seen.

Figure 13: Top 10 leading causes of inpatient morbidity, Cook Islands: 2013–2015

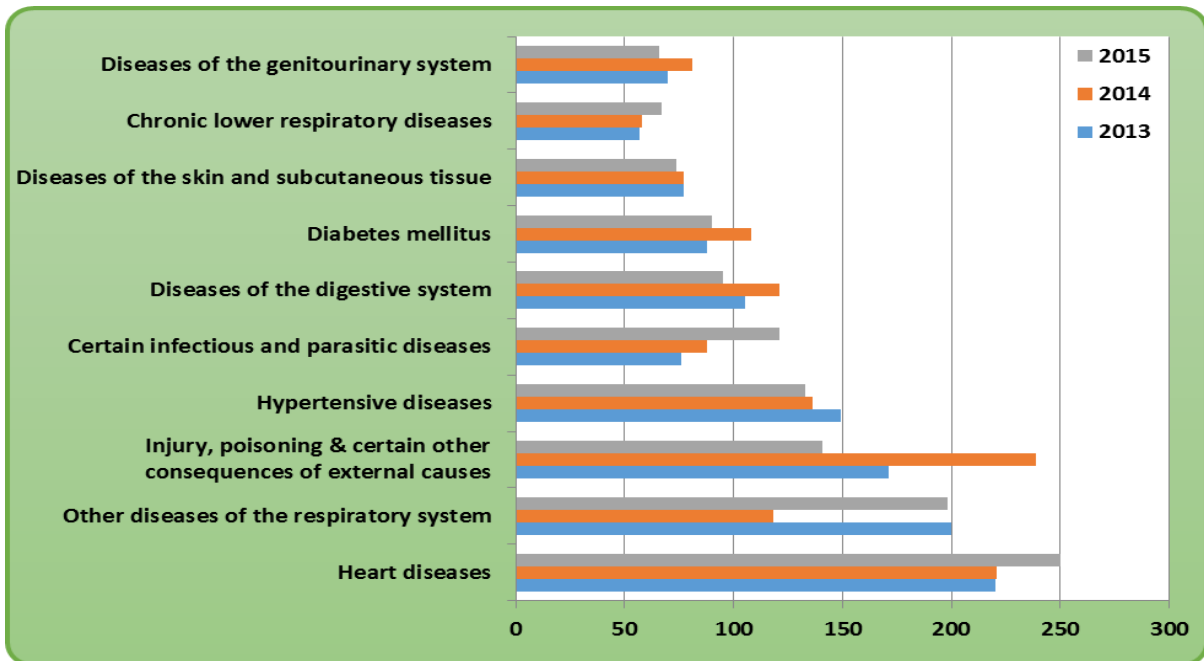
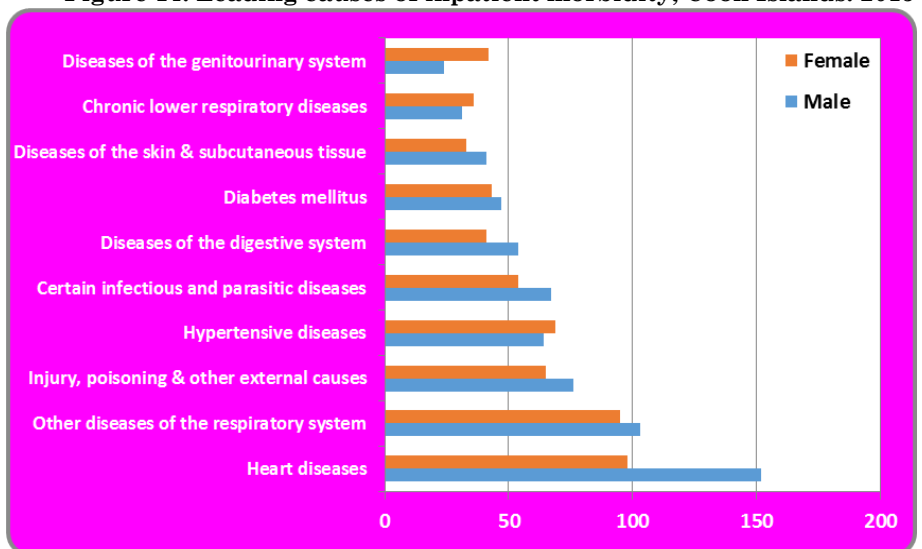


Figure 14: Leading causes of inpatient morbidity, Cook Islands: 2015

Figure 14 shows that a lot more of the inpatient morbidity relates to males as compared to females in 2015. Hypertensive, chronic lower respiratory and genitourinary diseases were the only three conditions in the top ten leading causes where females are more than males.

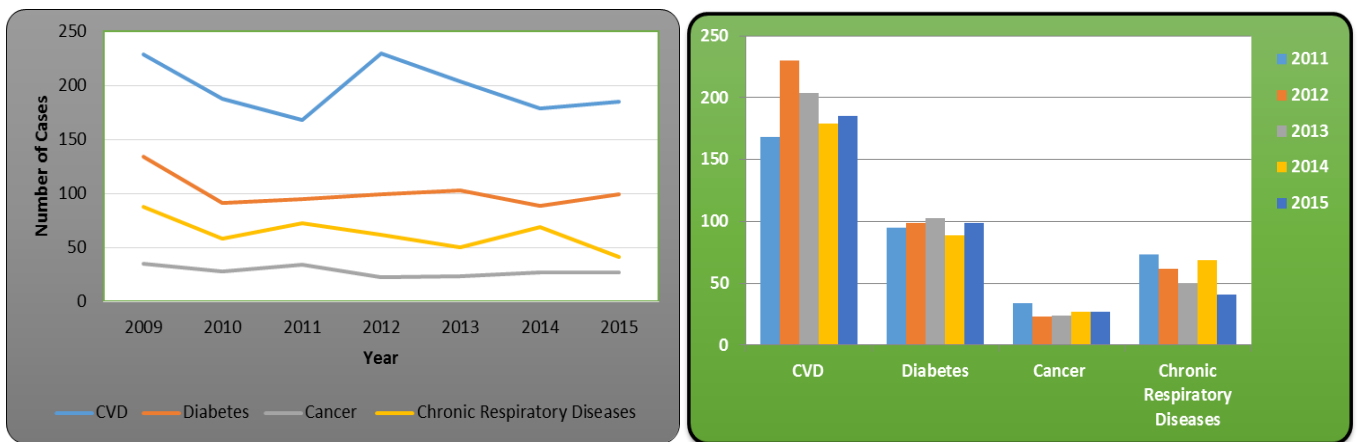


Non Communicable diseases

The Ministry continues in its effort to provide awareness on Non Communicable diseases (NCD) in the Cook Islands like any other country that is facing this epidemic. The four main NCD are cardiovascular diseases (inclusive of hypertension, stroke (CVA), heart disease, heart failure, myocardial infarction and renal impairment), diabetes, chronic respiratory diseases (inclusive of asthma, bronchiectasis, emphysema and chronic bronchitis) and cancer.

Cardiovascular diseases (CVD) is reported as the highest NCD condition in the Cook Islands as shown in **Figure 15**, with an average of over 200 cases a year (2009-2015). Diabetes followed averaging about 100 new cases a year. It should also be noted that a majority of these new patients do have other NCD conditions.

Figure 15: NCD new cases by year, Cook Islands

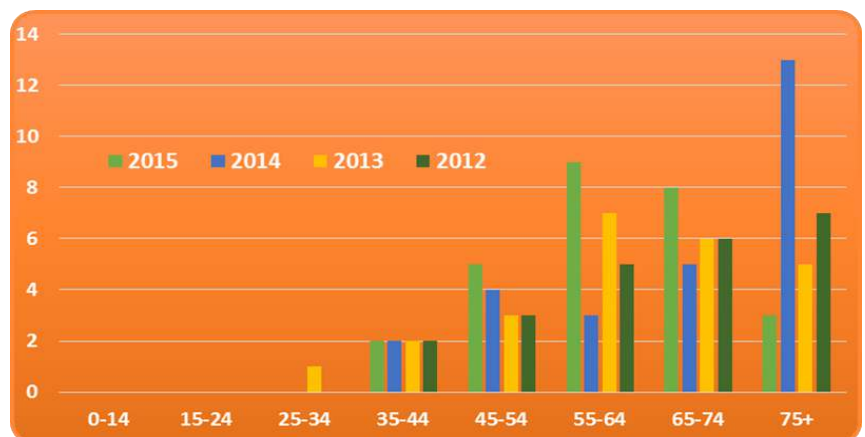


Cancer

From 2005-2015, there were a total of 276 people diagnosed with cancer, averaging almost 30 new cases each year.

In **Figure 16**, on the average over 90 percent (2012-2015) of the newly identified cancer cases were those aged 45 years and over, and more than 50 percent aged 65 years and over.

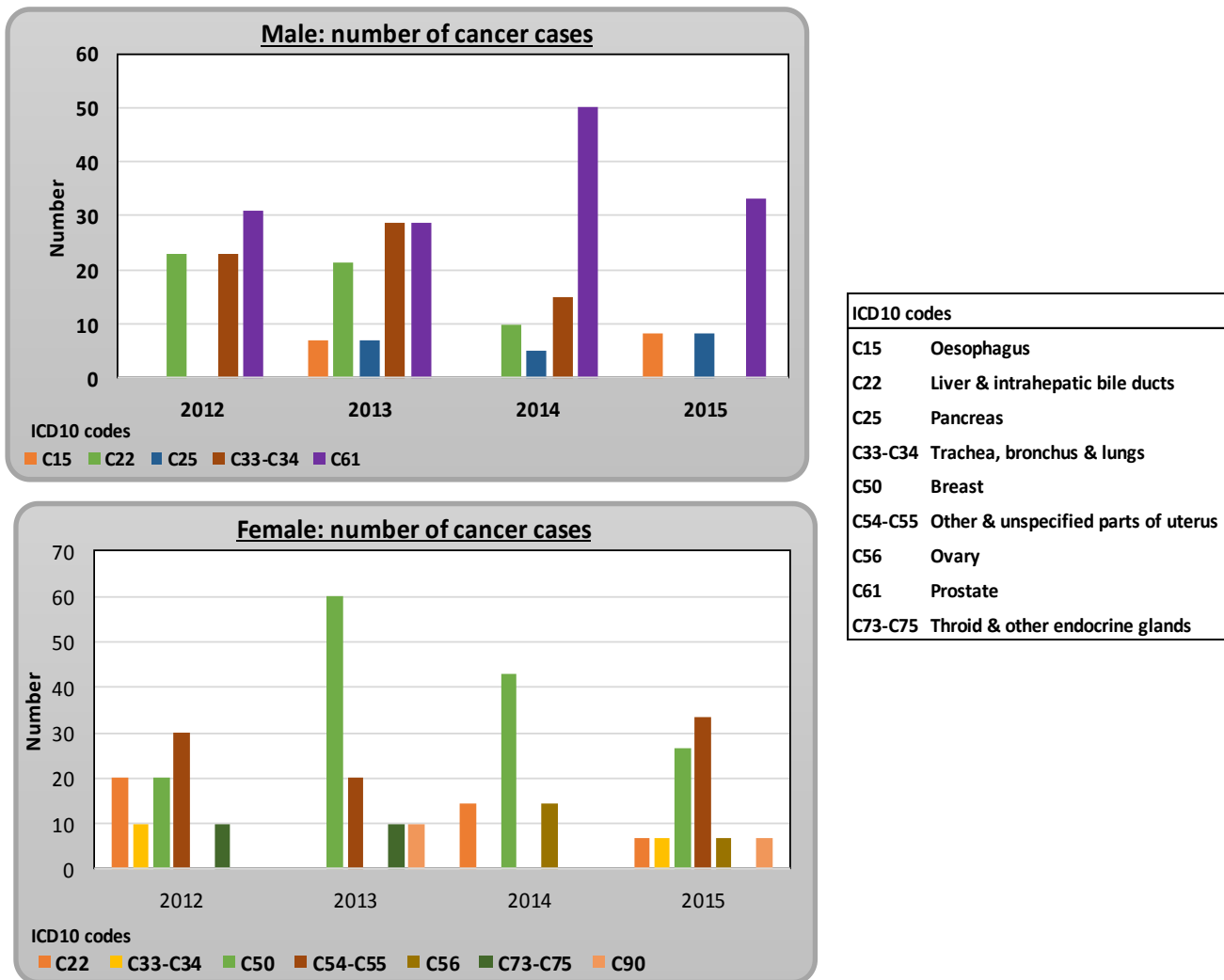
Figure 16: Cancer cases by age groupings, Cook Islands: 2012-2015



Prostate cancer is the highest amongst men (Figure 17), seen and confirmed in the Cook Islands within the last four years, as a result of the Prostate cancer awareness program initiated for more men to attend to clinics and get tested for early detection.

Breast cancer is the common one amongst Cook Islands women peaking in 2013 as a result of the mammogram program provided to our women population.

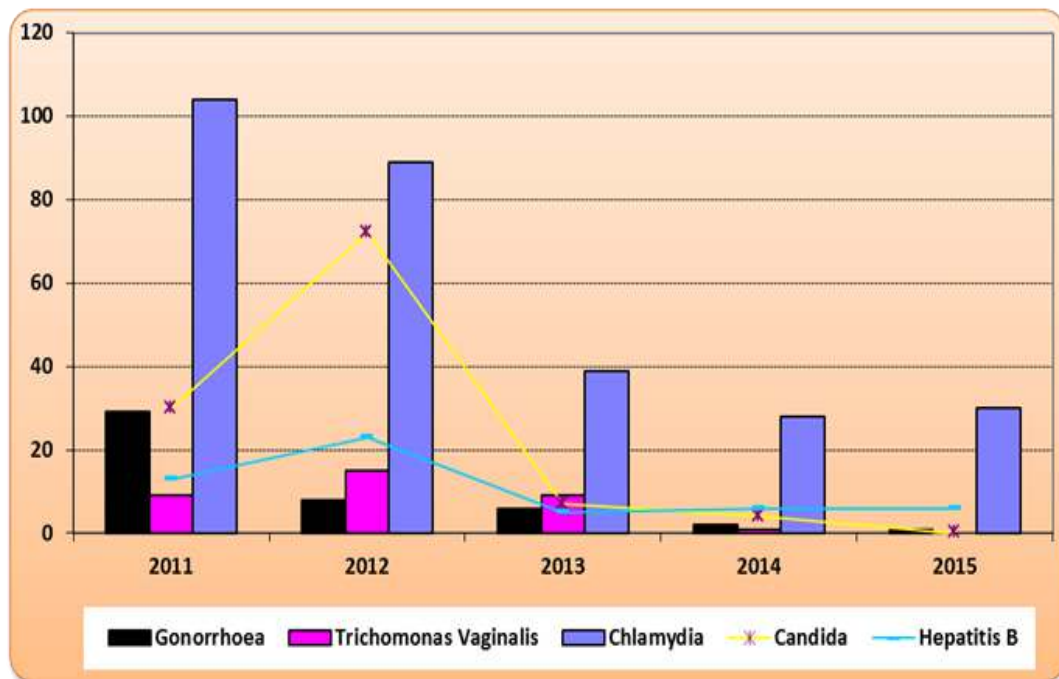
Figure 17: Cancer new cases by year, Cook Islands: 2012-2015



Sexually Transmitted Infections

Sexually transmitted infections (STIs) continued to decline in numbers within the last eight years (2008-2015) in the Cook Islands from a total of 312 cases in 2008 to 38 in 2015. Chlamydia continues to be the most prevalent type throughout the years making over half of the total diagnosed. These cases are laboratory confirmed.

Figure 18: Positively new cases by disease, Cook Islands: 2011-2015



STI	2008	2009	2010	2011	2012	2013	2014	2015
Gonorrhoea	72	56	23	29	8	6	2	1
HIV	0	0	0	0	0	0	0	0
Syphilis	1	2	2	2	7	0	0	1
Candida	39	70	35	30	72	7	4	0
Non Specific Urethritis	0	22	32	20	55	6	0	0
Trichomonas Vaginalis	16	13	18	9	15	9	1	0
Chlamydia	170	161	117	104	89	39	28	30
Hepatitis B	14	6	23	13	23	5	6	6

Transport crashes

There had been a high number of road traffic crashes occurring in the Cook Islands mainly driving on motor bikes as a result from speeding, driving carelessly on the road and driving with the influence of alcohol.

The figure below (**Figure 19**) shows the high number of reported crashes and admitted to the Rarotonga Hospital for those under the influence of alcohol for the years 2007 to 2015. The number of alcohol related crashes shows a decline from 64 percent as reported for 2008 to 39 percent for 2015 of those admitted for further care.

Figure 19: Number of transport crashes, Cook Islands: 2007-2015

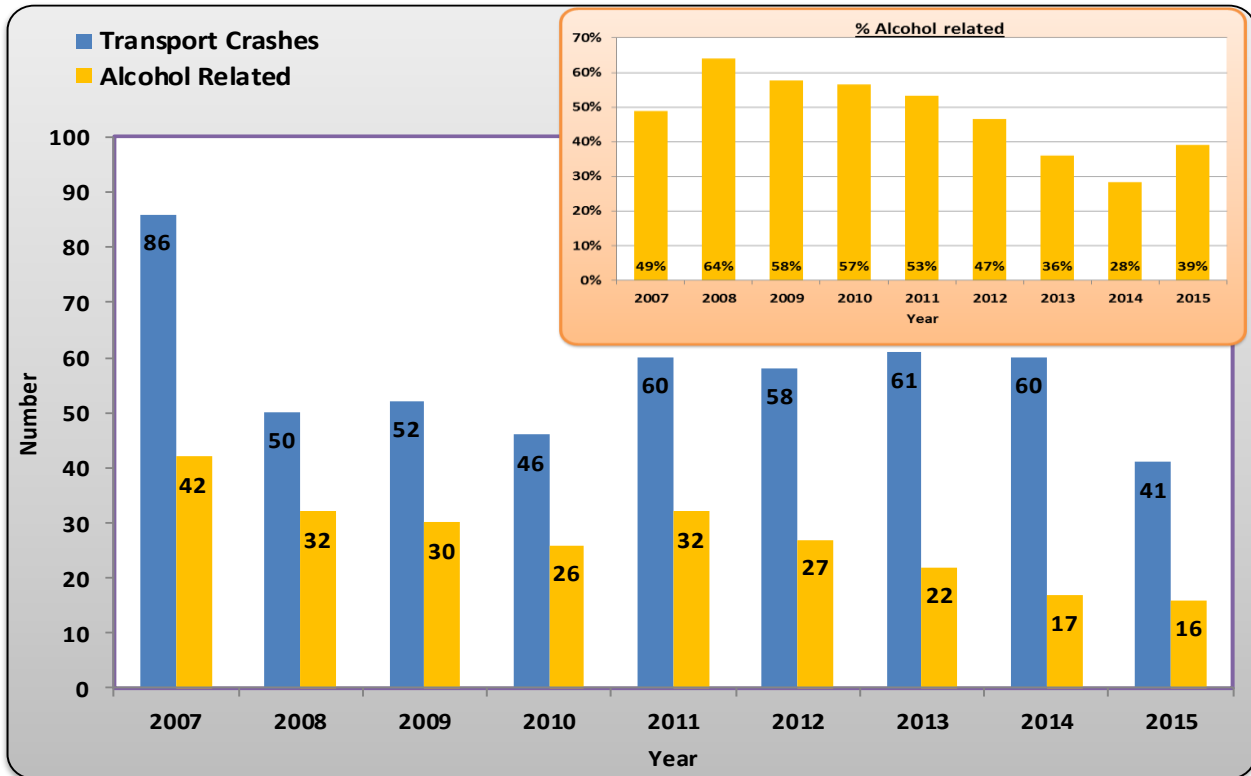
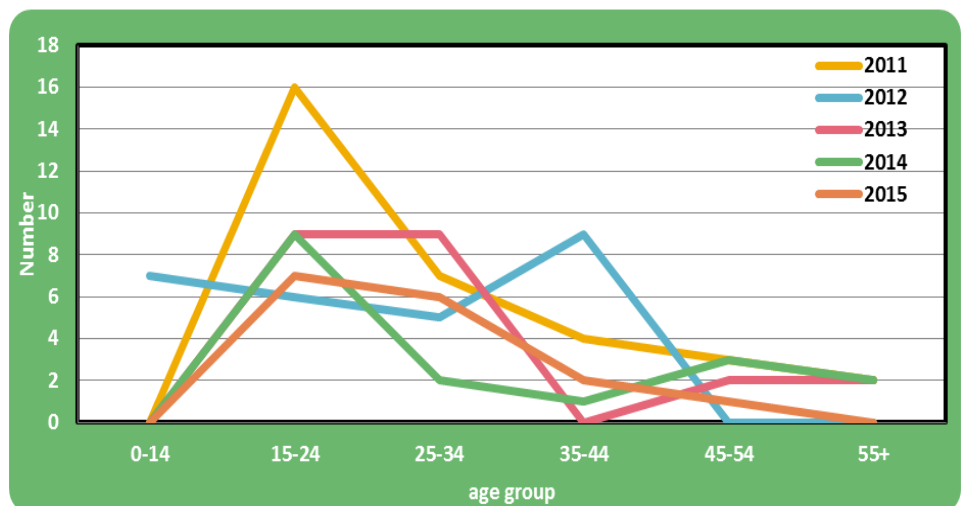


Figure 20: Transport crashes by age groupings, Cook Islands: 2011-2015

Figure 20 shows that 15-24 year age group causes the highest number of alcohol related crashes (16 cases) within the last five years.



Mortality

These refers' to all deaths occurring in the Cook Islands for Cook Islanders. All deaths that occur in the Hospital or Health Centre are to be issued a death certificate with a copy given to the family before burial. For those that die outside the Hospital or Health Centre, a Coroner's decision is required before burial of which a report is required to be completed by the Medical Officer or Nurse Practitioner in Charge.

Figure 21: Number of deaths by Island, Cook Islands: 2012-2015

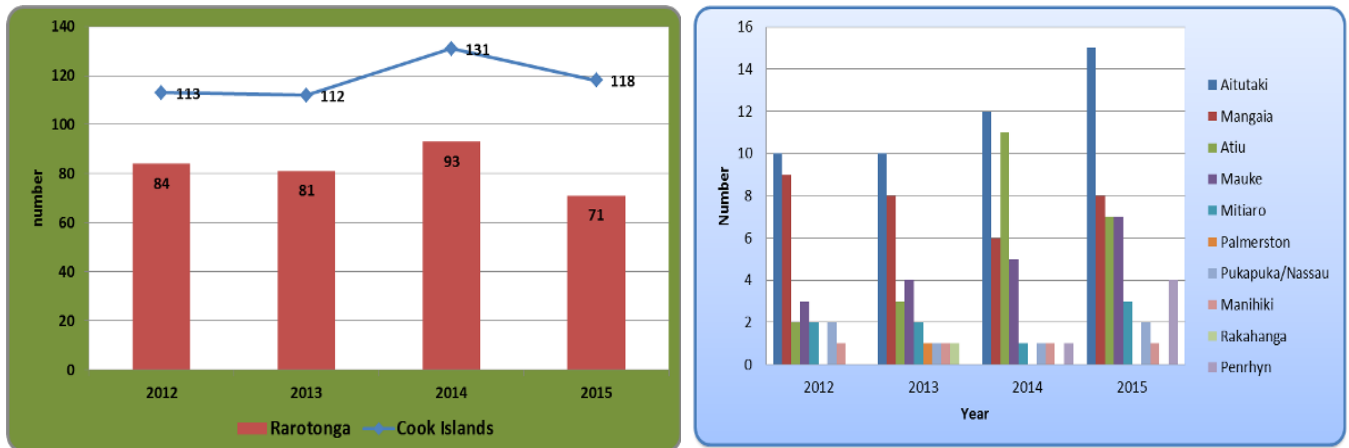
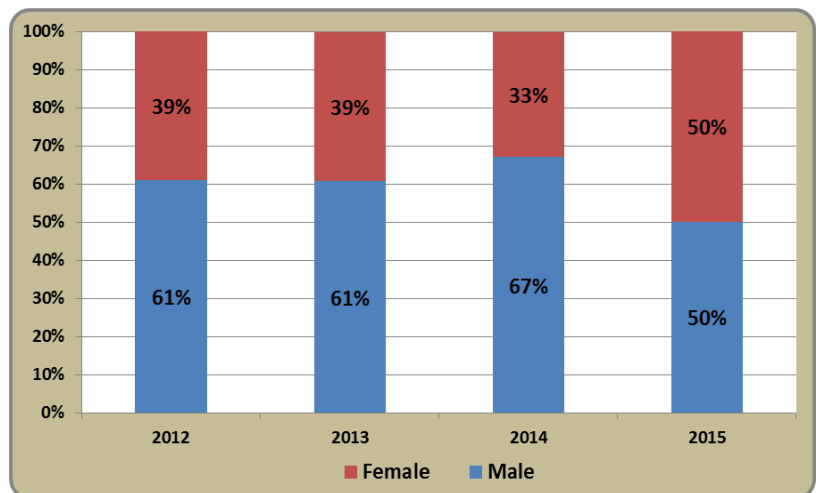


Figure 21 shows the number of deaths occurring in the Cook Islands as a total and by Islands during the years 2012-2015. As expected the majority of death occurs on Rarotonga with over 70 percent in each year. For the Pa Enua, Aitutaki reported the highest deaths in 2015 with an average of just over 10 people annually for the remaining years.

Figure 22: Percentage of deaths in the Cook Islands: 2012-2015

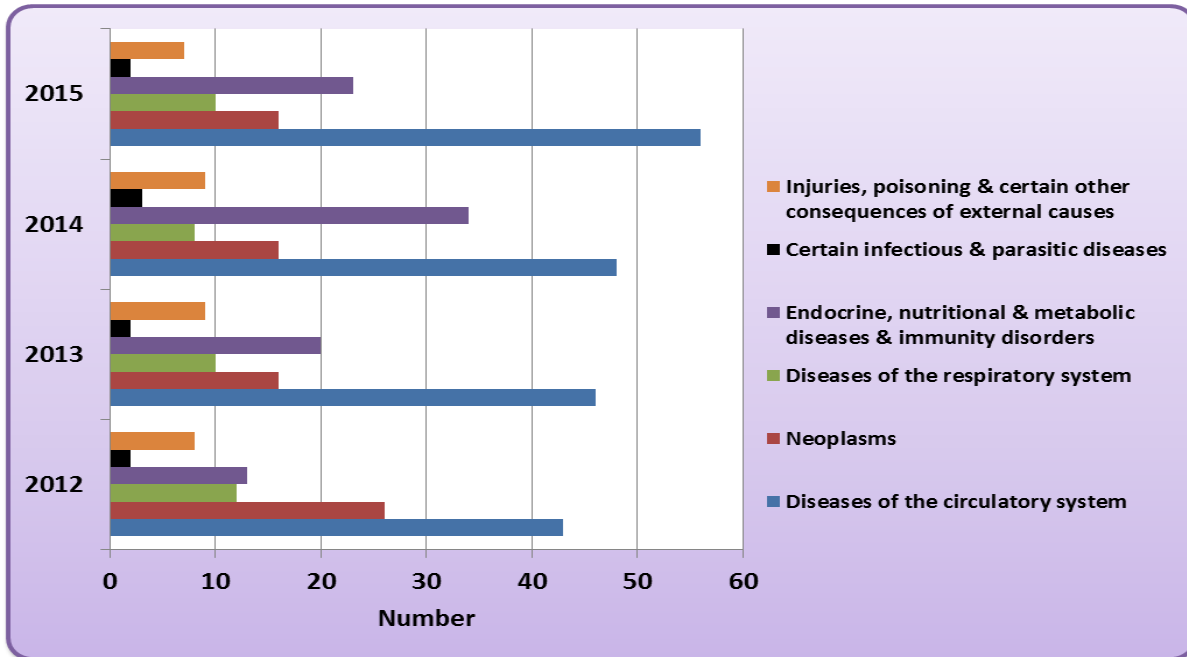
Mortality in the Cook Islands had always been dominated by male and this is clearly seen in the graph (Figure 22), reporting over 60 percent for years 2012-2014 but with equal proportions, 50 percent for each sex shown in 2015.



Causes of death

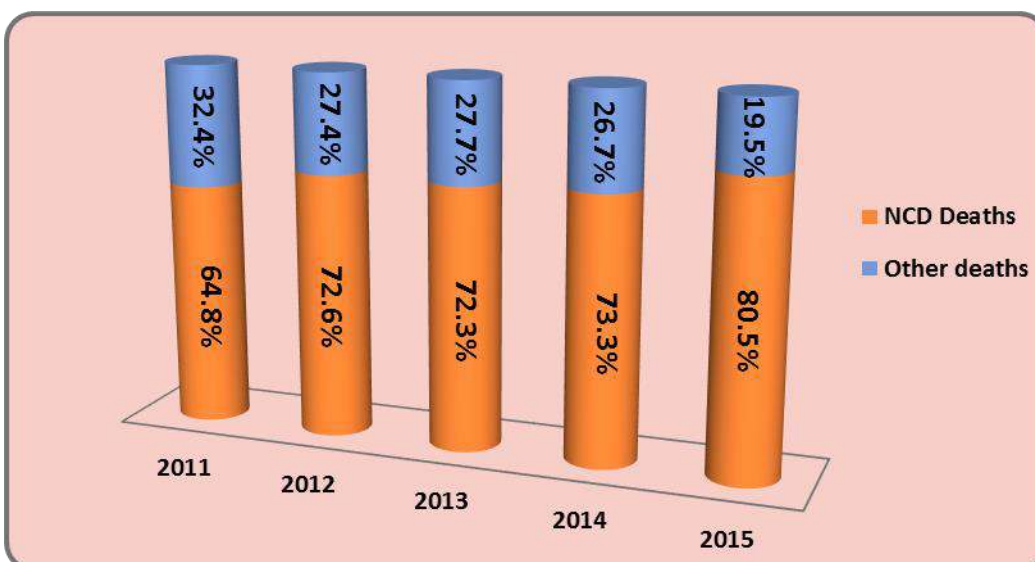
Seen in the graph below, (Figure 23) that diseases of the circulatory system groupings (hypertension, stroke and diseases associated with the heart) were reported as the main underlying causes of deaths in the Cook Islands for the years 2012 to 2015.

Figure 23: Causes of death by ICD10 main groups, Cook Islands: 2012-2015



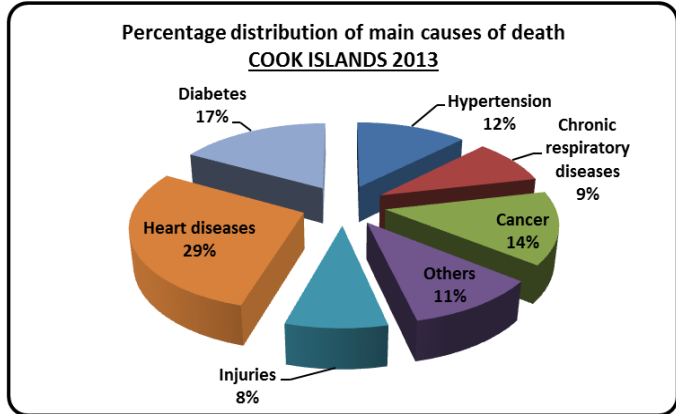
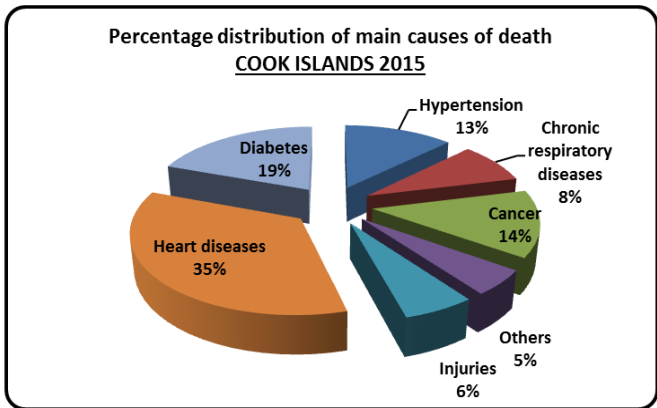
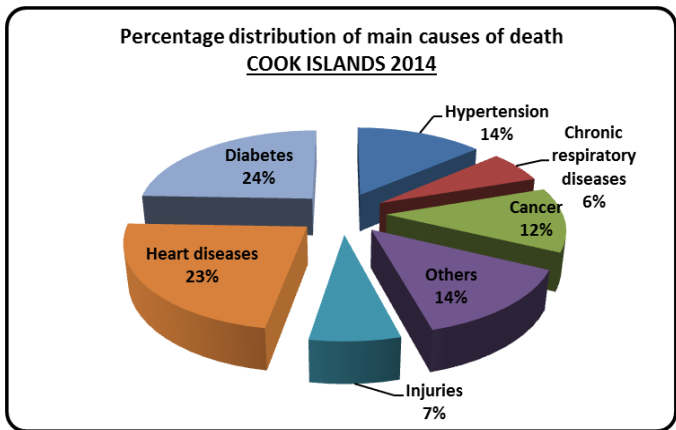
As shown in the graph below over 80 percent of deaths in 2015 were due to NCD causes. This number had gradually increased from almost 65 percent reported in 2011 to over 80 percent in 2015.

Figure 24: NCD deaths (%) in the Cook Islands: 2011-2015



The graph below (**Figure 25**) shows that the main cause of death as reported in the Cook Islands for the last three years is that of heart diseases, increasing from 29 percent in 2013 to 35 percent in 2015. Those dying from diabetes were slightly more than heart diseases in 2014 with 24 percent.

Figure 25: Main causes of deaths (%), Cook Islands: 2013-2015



Health Services

Facilities

Below table shows the various health facilities in the Cook Islands. It should be noted that there are only two hospitals in the country, on Rarotonga and Aitutaki. Other islands only have Health Centre's, with the provision of basic health services that are managed by Medical Officers and for some by Nurse Practitioners.

Table 5: Health facilities available by region & island, Cook Islands: 2015

REGION & ISLAND	Census Districts	Hospital Beds	Out-patient Clinics	Dental Clinics	Health Centres	Child Welfare Clinics	Private Medical Clinics	Private Dental Clinics
COOK ISLANDS	44	139	14	5	12	45	2	2
RAROTONGA	12	70	2	1	0	28	2	2
SOUTHERN GROUP excl. Rarotonga	20	51	5	4	4	15	0	0
Aitutaki	4	28	1	1	0	8	0	0
Mangaia	6	6	1	1	1	6	0	0
Atiu	5	9	1	1	1	1	0	0
Mauke	3	6	1	1	1	0	0	0
Mitiaro	2	2	1	0	1	0	0	0
NORTHERN GROUP	12	18	7	0	8	2	0	0
Palmerston	1	0	1	0	1	0	0	0
Pukapuka	3	4	1	0	1	2	0	0
Nassau	1	0	1	0	1	0	0	0
Manihiki	2	8	2	0	2	0	0	0
Rakahanga	3	2	1	0	1	0	0	0
Penrhyn	2	4	1	0	2	0	0	0

Referrals

In the Cook Islands all 12 of the inhabitant Outer Islands (Pa Enuu) refer patients to the main Island of Rarotonga for further health care and management. For more complicated cases they are further referred to New Zealand.

Figure 26: Number of patients referred, Cook Islands: 2008-2015

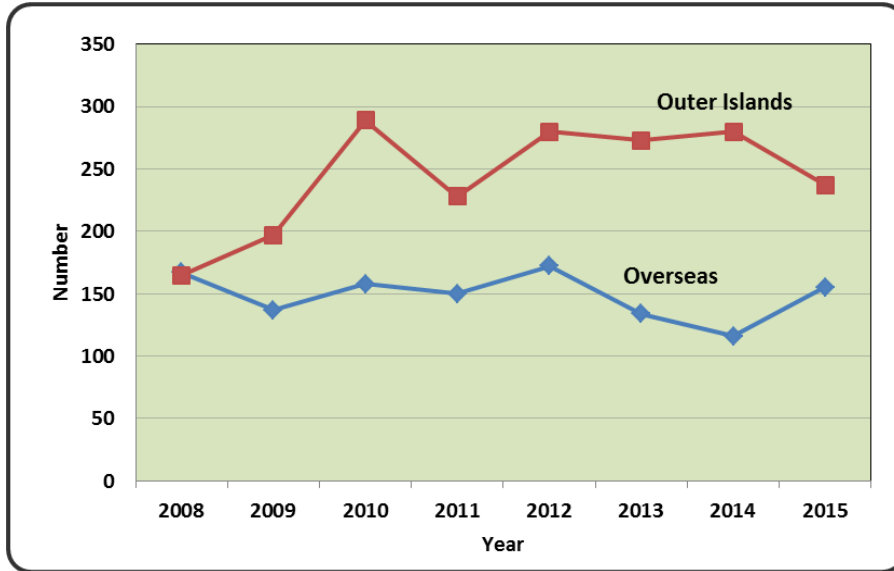
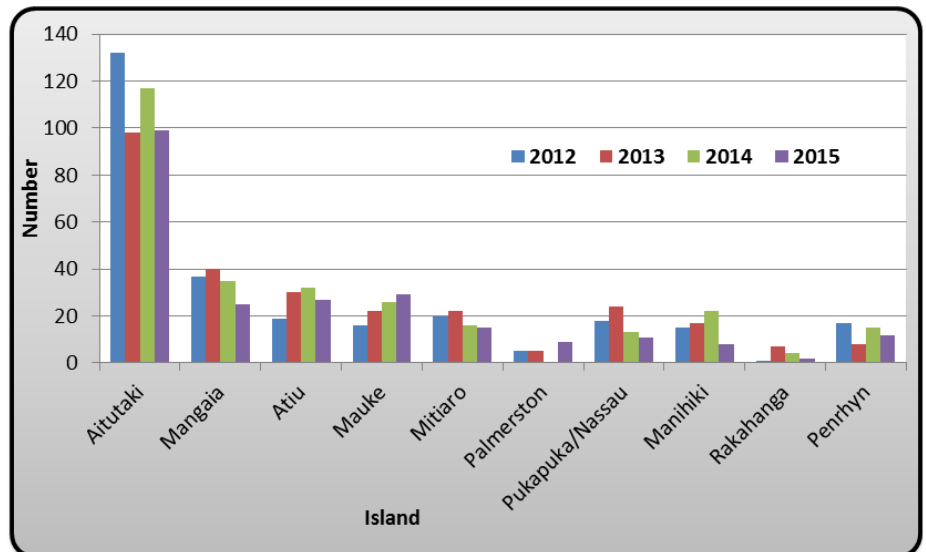


Figure 26 shows the number of patients referred from the Pa Enuu to Rarotonga Hospital and those referred to New Zealand from Rarotonga from 2008 to 2015. For those patients referred overseas, this had shown an increase from 134 in 2013 to 155 in 2015. Unlike the Pa Enuu the numbers declined to 237 in 2015 from 280 in the previous year.

Figure 27: Number of patients received by Island Cook Islands: 2012-2015

Figure 27, shows that most of the referrals to Rarotonga for the last four years were received from the Island of Aitutaki at an average of just over 110 patients a year. This is followed by the Island of Mangaia with an average of 34 patients a year and the Island of Atiu with 27 patients a year.



Outpatient Services

The outpatient department in the Cook Islands provides the following services to all patients attending the hospitals and health centres; consultations, dressings, injections, minor operations including other services required for the specialised clinics and the visiting specialists.

Over the past 5 years, over 30,000 consultations were recorded from hospital visits at the general outpatients. Other common services provided in the outpatient are the dressings of open wounds and injections.

It should be noted that the significant decline in 2014 was due to loss of data on MedTech32.

Figure 28: Outpatient indicator by service, Cook Islands: 2010-2015

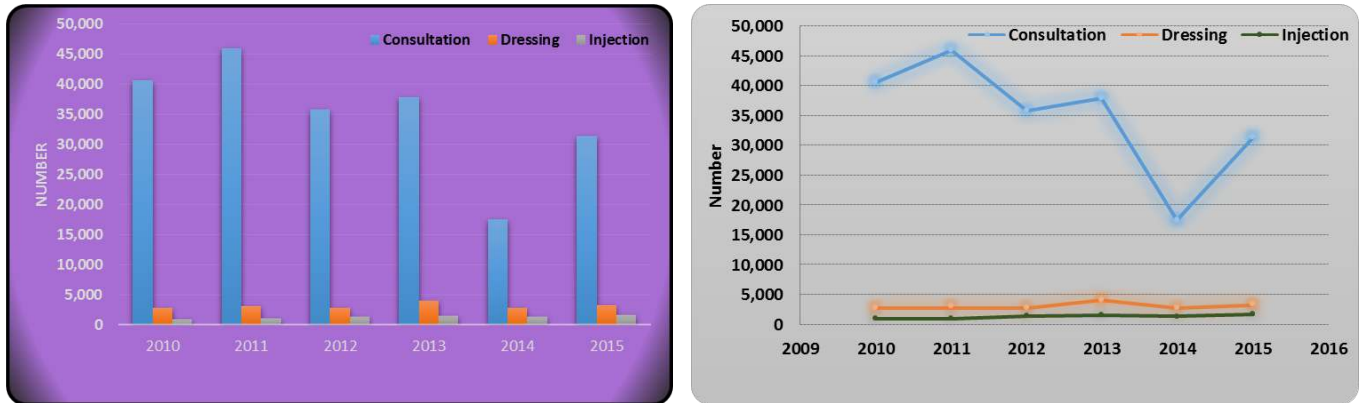
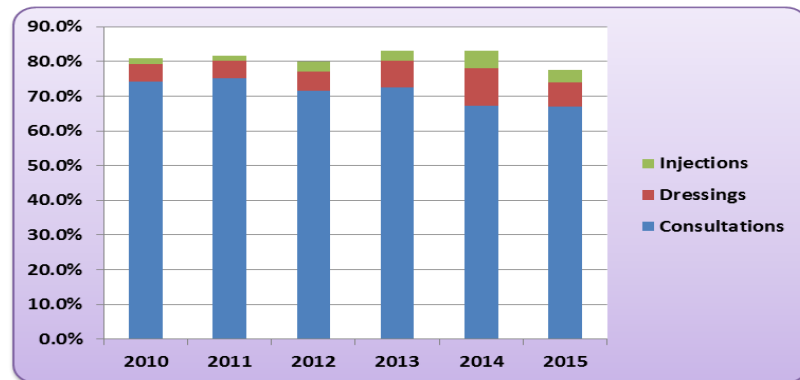


Figure 29: Outpatient consultations (%), Cook Islands: 2010-2015



For the past five years over 70 percent of those attending the hospital went for consultation services, to see a doctor or nurse practitioner in the Pa Enua due to some complaints they are experiencing with their health, and about an average of 7 percent for dressings, and 3 percent for injections.

The following graph shows the number of people by sex who attended the outpatient services for consultation. There is no difference in the number of people by male and female that was attending the outpatient services here in the Cook Islands. However there is a big drop in the number of people seen in 2014 due to the loss of data on MedTech32.

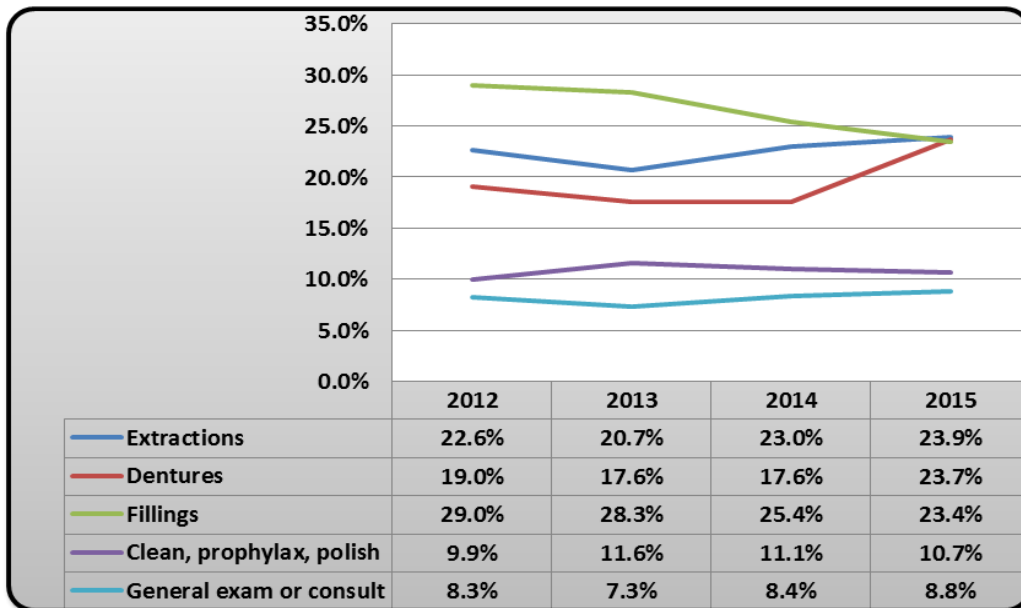
Figure 30: Consultations by sex, Cook Islands: 2012-2015



Dental Services

The most common dental services provided over the last 4 years (2012-2015) are for tooth extractions, reported as between 20 to 24 percent. Dentures and Fillings followed next, between 18 to 24 percent and 23 to 29 percent respectively.

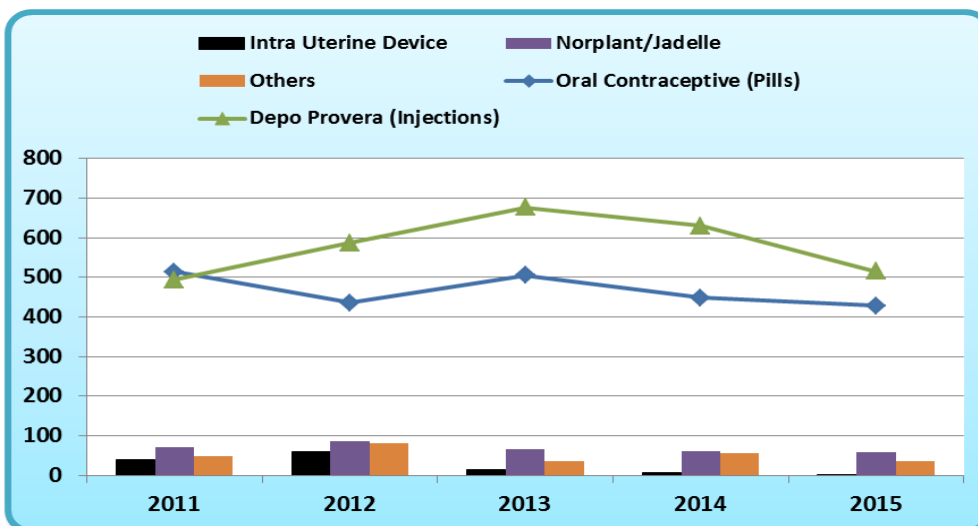
Figure 31: Common dental consultations (%), Cook Islands: 2012-2015



Family Planning

A total of 3,655 Cook Islanders in the child bearing ages of 15-49 years were reported in the 2011 population census. The most common methods of contraceptives are the injections (Depo Provera) ranging from 42 percent to almost 53 percent of those reported at the Rarotonga hospital to be using any type of contraceptives, and the pills (Oral contraceptives) ranging from 37 to 44 percent as reported for the last five years. In 2015 almost 50 percent use injections and just over 41 percent use pills, of all those reporting to have used any method of contraceptives.

Figure 32: Current users of family planning, Cook Islands: 2008-2015



Annex 1: Listing of tables

1. POPULATION

Table 1.1: Total population by region & island, sex and four major age groupings, 2011.....	32
Table 1.2: Resident population by region & island, sex and four major age groupings, 2011.....	32
Table 1.3: Resident population by sex, region & island and five year age groupings, 2011.....	33

2. HEALTH STATUS

Table 2.1: Number and rate of birth & death, infant death, maternal death and fetal death, 1985-2015.....	35
Table 2.2: Live births by region & island, year and sex, 2012-2015.....	36
Table 2.3: Mothers given birth by region & island and age of mother, 2015.....	36
Table 2.4: Mothers given birth by region & island and age of other, 2014.....	37
Table 2.5: Mothers given birth by region & island and age of mother, 2013.....	37
Table 2.6: Mothers given birth and fertility rates by age groupings, 2007–2015.....	38
Table 2.7: Suspected cases of notifiable diseases by year, 2011-2015.....	39
Table 2.8: Ciguatera (fish poisoning) cases by year and month, 2000-2015.....	39
Table 2.9: Inpatient morbidity by main group, year and sex, 2013-2015.....	40
Table 2.10: Ten leading causes of inpatient morbidity by sex, 2015.....	40
Table 2.11: Ten leading causes of inpatient morbidity by sex, 2014.....	41
Table 2.12: Ten leading causes of inpatient morbidity by sex, 2013.....	41
Table 2.13: Inpatient morbidity by sex and age groupings, 2015.....	42
Table 2.14: Inpatient morbidity by sex and age groupings, 2014.....	43
Table 2.15: Inpatient morbidity by sex and age groupings, 2013.....	44
Table 2.16: Prevalence and incidence of NCD cases by year, 2009–2015.....	45
Table 2.17: Incidence of cancer cases by site, sex and age groupings, 2015.....	45
Table 2.18: Incidence of cancer cases by site, Sex and age groupings, 2014.....	46
Table 2.19: Incidence of cancer cases by site, sex and age groupings, 2013.....	46
Table 2.20: Incidence of cancer cases by site, sex and age groupings, 2012.....	46

Table 2.21: Admissions due to transport crashes, 2007–2015.....	47
Table 2.22: Admission due to alcohol related transport accident by age groups and year, 2007–2015.....	47
Table 2.23: Mortality by region & island, year and sex, 2012–2015.....	48
Table 2.24: Selected common causes of mortality by year and rate, 2012–2015.....	49
Table 2.25: Mortality by the underlying cause, age groupings and sex, 2015.....	50
Table 2.26: Mortality by the underlying cause, age groupings and sex, 2014.....	51
Table 2.27: Mortality by the underlying cause, age groupings and sex, 2013.....	52
Table 2.28: Laboratory positive new cases by disease and year, 2009-2015.....	53

3. MEDICAL AND HEALTH SERVICES AND FACILITIES

Table 3.1: Number of cases referred overseas and to Rarotonga, 2000–2015.....	54
Table 3.2: Patients admitted & discharged from hospital by region & island, 2015.....	55
Table 3.3: Patients admitted & discharged from hospital by region & island, 2014.....	55
Table 3.4: Patients admitted & discharged from hospital by region & island, 2013.....	56
Table 3.5: Patients admitted & discharged from hospital by region & island, Rarotonga 2015.....	56
Table 3.6: Patients admitted & discharged from hospital by region & island, Rarotonga 2014.....	57
Table 3.7: Patients admitted & discharged from hospital by region & island, Rarotonga 2013.....	57
Table 3.8: Number of outpatient consultations by sex and age groupings, 2012–2015.....	58
Table 3.9: Current Users – Women on Family Planning contraceptives by year, 2010–2015.....	58

TABLES

**Table 1.1: Total population by region & island, gender and four major age groupings
COOK ISLANDS 2011**

REGION & ISLAND	Both gender		0 - 14		15 - 44		45 - 59		60 +		
	Male	Female	Male	Female	Male	Female	Male	Female	Male	Female	
COOK ISLANDS	17,794	8,815	8,979	2,368	2,259	3,651	3,933	1,600	1,604	1,196	1,183
RAROTONGA	13,095	6,460	6,635	1,596	1,523	2,816	3,088	1,186	1,209	862	815
SOUTHERN GROUP excluding Rarotonga	3,586	1,777	1,809	560	521	617	658	316	313	284	317
Aitutaki	2,038	994	1,044	304	297	373	416	174	174	143	157
Mangaia	572	287	285	101	85	82	90	46	46	58	64
Atiu	480	233	247	77	78	71	82	45	43	40	44
Mauke	307	162	145	47	32	56	46	28	35	31	32
Mitiaro	189	101	88	31	29	35	24	23	15	12	20
NORTHERN GROUP	1,113	578	535	212	215	218	187	98	82	50	51
Palmerston	60	28	32	11	14	12	10	2	3	3	5
Pukapuka	451	221	230	84	106	84	72	34	33	19	19
Nassau	73	36	37	18	17	12	15	5	3	1	2
Manihiki	239	136	103	43	28	45	40	37	23	11	12
Rakahanga	77	38	39	6	12	18	15	8	7	6	5
Penrhyn	213	119	94	50	38	47	35	12	13	10	8
Suvarrow	0	0	0	0	0	0	0	0	0	0	0

**Table 1.2: Resident Population by Region & Island, gender and Four Major Age Groupings
COOK ISLANDS 2011**

REGION & ISLAND	Both gender		0 - 14		15 - 44		45 - 59		60 +		
	Male	Female	Male	Female	Male	Female	Male	Female	Male	Female	
COOK ISLANDS	14,977	7,490	7,487	2,220	2,112	3,003	3,127	1,316	1,274	951	974
RAROTONGA	10,572	5,278	5,294	1,471	1,398	2,241	2,353	923	913	643	630
SOUTHERN GROUP excluding Rarotonga	3,293	1,635	1,658	537	499	544	587	295	279	259	293
Aitutaki	1,774	868	906	284	275	310	353	155	145	119	133
Mangaia	562	283	279	101	85	80	87	45	43	57	64
Atiu	468	228	240	74	78	70	77	44	41	40	44
Mauke	300	155	145	47	32	49	46	28	35	31	32
Mitiaro	189	101	88	31	29	35	24	23	15	12	20
NORTHERN GROUP	1,112	577	535	212	215	218	187	98	82	49	51
Palmerston	60	28	32	11	14	12	10	2	3	3	5
Pukapuka	451	221	230	84	106	84	72	34	33	19	19
Nassau	73	36	37	18	17	12	15	5	3	1	2
Manihiki	238	135	103	43	28	45	40	37	23	10	12
Rakahanga	77	38	39	6	12	18	15	8	7	6	5
Penrhyn	213	119	94	50	38	47	35	12	13	10	8
Suvarrow	0	0	0	0	0	0	0	0	0	0	0

Table 1.3: Resident population by sex, island and five year age groupings

COOK ISLANDS 2011

Sex: Both

Island/Region	Total	Age Groups																
		< 05	05 - 09	10 - 14	15 - 19	20 - 24	25 - 29	30 - 34	35 - 39	40 - 44	45 - 49	50 - 54	55 - 59	60 - 64	65 - 69	70 - 74	75 - 79	80 +
COOK ISLANDS	14,977	1,481	1,443	1,408	1,283	1,015	944	856	969	1,063	1,070	844	676	580	490	418	249	188
RAROTONGA	10,572	1,002	940	927	916	745	727	672	750	784	749	602	485	397	336	278	163	99
SOUTHERN GROUP (excluding Rarotonga)	3,293	338	360	338	281	186	154	128	169	213	242	176	156	156	129	122	75	70
Aitutaki	1,774	192	200	167	149	121	102	88	90	113	130	98	72	70	65	53	37	27
Mangaia	562	50	69	67	46	13	15	18	29	46	38	26	24	36	32	24	14	15
Atiu	468	55	49	48	36	26	17	16	21	31	33	26	26	25	15	23	10	11
Mauke	300	21	25	33	27	21	17	4	18	8	25	19	19	15	15	15	7	11
Mitiaro	189	20	17	23	23	5	3	2	11	15	16	7	15	10	2	7	7	6
NORTHERN GROUP	1,112	141	143	143	86	84	63	56	50	66	79	66	35	27	25	18	11	19
Palmerston	60	2	9	14	9	1	0	3	2	7	0	3	2	2	1	0	1	4
Pukapuka	451	61	66	63	39	44	21	14	16	22	29	24	14	6	12	6	7	7
Nassau	73	9	9	17	9	4	5	1	5	3	5	3	0	0	2	1	0	0
Manihiki	238	29	17	25	12	19	13	14	9	18	28	23	9	12	5	3	0	2
Rakahanga	77	8	6	4	4	6	8	4	5	6	4	4	7	4	1	3	1	2
Penrhyn	213	32	36	20	13	10	16	20	13	10	13	9	3	3	4	5	2	4
Suvarrow	0	0	0	0	0	0	0	0	0	0	0	0	0	0	0	0	0	0

Sex: Male

COOK ISLANDS	7,490	748	723	749	686	503	451	394	448	521	542	432	342	310	244	204	114	79
RAROTONGA	5,278	504	464	503	484	365	345	309	351	387	366	311	246	213	172	139	77	42
SOUTHERN GROUP (excluding Rarotonga)	1,635	176	190	171	145	91	81	58	69	100	128	87	80	79	61	56	32	31
Aitutaki	868	102	103	79	73	60	50	42	41	44	74	46	35	35	32	27	15	10
Mangaia	283	28	37	36	23	6	8	7	8	28	16	15	14	20	15	10	6	6
Atiu	228	23	24	27	17	10	12	6	9	16	18	10	16	10	7	11	4	8
Mauke	155	14	16	17	17	11	9	3	6	3	10	11	7	11	7	5	4	4
Mitiaro	101	9	10	12	15	4	2	0	5	9	10	5	8	3	0	3	3	3
NORTHERN GROUP	577	68	69	75	57	47	25	27	28	34	48	34	16	18	11	9	5	6
Palmerston	28	0	3	8	5	1	0	0	2	4	0	1	1	2	0	0	0	1
Pukapuka	221	27	24	33	26	23	8	8	9	10	19	11	4	3	6	4	4	2
Nassau	36	3	6	9	5	2	1	1	2	1	5	0	0	0	1	0	0	0
Manihiki	135	16	12	15	8	12	5	8	4	8	15	14	8	6	2	1	0	1
Rakahanga	38	4	2	0	3	3	5	1	2	4	3	3	2	4	0	1	0	1
Penrhyn	119	18	22	10	10	6	6	9	9	7	6	5	1	3	2	3	1	1
Suvarrow	0	0	0	0	0	0	0	0	0	0	0	0	0	0	0	0	0	0

TABLE 1.3: Resident population by sex, island and five year age groupings (Cont'd)

COOK ISLANDS 2011

Sex: Female

Island/Region	Total	Age Groups																	
		< 05	05 - 09	10 - 14	15 - 19	20 - 24	25 - 29	30 - 34	35 - 39	40 - 44	45 - 49	50 - 54	55 - 59	60 - 64	65 - 69	70 - 74	75 - 79	80 +	
COOK ISLANDS	7,487	733	720	659	597	512	493	462	521	542	528	412	334	270	246	214	135	109	
RAROTONGA	5,294	498	476	424	432	380	382	363	399	397	383	291	239	184	164	139	86	57	
SOUTHERN GROUP (excluding Rarotonga)	1,658	162	170	167	136	95	73	70	100	113	114	89	76	77	68	66	43	39	
Aitutaki	906	90	97	88	76	61	52	46	49	69	56	52	37	35	33	26	22	17	
Mangaia	279	22	32	31	23	7	7	11	21	18	22	11	10	16	17	14	8	9	
Atiu	240	32	25	21	19	16	5	10	12	15	15	16	10	15	8	12	6	3	
Mauke	145	7	9	16	10	10	8	1	12	5	15	8	12	4	8	10	3	7	
Mitiaro	88	11	7	11	8	1	1	2	6	6	6	2	7	7	2	4	4	3	
NORTHERN GROUP	535	73	74	68	29	37	38	29	22	32	31	32	19	9	14	9	6	13	
Palmerston	32	2	6	6	4	0	0	3	0	3	0	2	1	0	1	0	1	3	
Pukapuka	230	34	42	30	13	21	13	6	7	12	10	13	10	3	6	2	3	5	
Nassau	37	6	3	8	4	2	4	0	3	2	0	3	0	0	1	1	0	0	
Manihiki	103	13	5	10	4	7	8	6	5	10	13	9	1	6	3	2	0	1	
Rakahanga	39	4	4	4	1	3	3	3	3	2	1	1	5	0	1	2	1	1	
Penrhyn	94	14	14	10	3	4	10	11	4	3	7	4	2	0	2	2	1	3	
Suwarrow	0	0	0	0	0	0	0	0	0	0	0	0	0	0	0	0	0	0	

**Table 2.1: Number and rate of births, deaths, infant deaths,
maternal deaths and foetal deaths
COOK ISLANDS 1985 - 2015**

YEAR	Live Births		Deaths		Deaths under 1 yr		Maternal Deaths		Foetal Deaths	
	Number	Crude Rate	Number	Crude Rate	Number	Rate	Number	Rate	Number	Rate
1985	433	24.3	130	7.3	13	30.0	0	0	1	2.3
1986	420	24.0	98	5.6	7	16.7	0	0	4	9.4
1987	428	24.5	116	6.5	16	37.4	0	0	2	4.7
1988	425	24.3	93	5.3	3	7.0	0	0	4	9.5
1989	453	25.9	101	5.6	12	26.4	1	2	6	13.1
1990	465	26.6	127	6.9	12	25.8	0	0	2	4.3
1991	479	25.7	140	7.5	15	31.3	0	0	7	14.4
1992	529	30.2	114	6.5	5	9.5	1	2	4	7.5
1993	507	29.3	105	6.1	6	11.8	0	0	5	9.7
1994	568	30.9	114	6.2	3	5.3	0	0	4	7.1
1995	514	27.9	115	6.3	2	4.0	1	2	2	4.0
1996	510	27.1	105	5.6	12	23.5	0	0	4	7.8
1997	412	23.5	134	7.7	14	34.0	0	0	7	17.0
1998	389	23.3	111	6.6	7	18.0	0	0	3	7.7
1999	361	23.1	96	6.2	6	16.6	0	0	4	11.1
2000	309	20.6	127	8.5	6	19.4	0	0	4	12.9
2001	306	21.7	79	5.6	3	9.8	0	0	2	6.5
2002	293	19.8	100	6.8	1	3.4	0	0	2	6.8
2003	295	21.2	88	6.3	5	16.9	0	0	1	3.4
2004	313	23.2	106	7.9	5	15.8	0	0	3	9.6
2005	297	21.7	95	6.9	3	9.9	0	0	6	20.2
2006	306	20.7	94	6.4	3	9.7	0	0	3	9.8
2007	320	21.8	100	6.8	8	24.8	0	0	3	9.4
2008	293	20.5	65	4.5	2	6.8	0	0	3	10.2
2009	280	21.1	82	6.2	0	0.0	0	0	3	10.7
2010	289	24.3	97	8.2	1	3.4	0	0	2	6.9
2011	284	19.3	108	7.3	2	7.0	0	0	1	3.5
2012	292	20.4	113	7.9	2	6.8	0	0	0	0.0
2013	261	18.5	112	7.9	0	0.0	0	0	0	0.0
2014	223	16.4	131	9.6	0	0.0	0	0	0	0.0
2015	218	16.6	118	9.0	1	4.8	0	0	1	4.8

Note: 1 - Rate calculating for 1985 were based on 1981 census, while 1986 to 1990 were based on 1986 census and 1991 census.

2 - Rates are per 1,000 of the population.

3 - Total Birth does not include Stillbirth.

4 - Crude birth rate and crude death rate are calculated per thousand Resident population as of 1992

**Table 2.2: Live births by region, island, year and sex
COOK ISLANDS 2012 - 2015**

REGION & ISLAND	2012			2013			2014			2015		
	Both Sexes	Male	Female	Both Sexes	Male	Female	Both Sexes	Male	Female	Both Sexes	Male	Female
COOK ISLANDS	292	163	129	261	133	128	223	117	106	218	107	111
RAROTONGA	258	144	114	227	112	115	209	112	97	203	98	105
SOUTHERN GROUP excluding Rarotonga	24	12	12	26	18	8	12	4	8	10	7	3
Aitutaki	20	10	10	22	15	7	10	4	6	9	7	2
Mangaia	0	0	0	3	2	1	1	0	1	0	0	0
Atiu	4	2	2	1	1	0	1	0	1	1	0	1
Mauke	0	0	0	0	0	0	0	0	0	0	0	0
Mitiaro	0	0	0	0	0	0	0	0	0	0	0	0
NORTHERN GROUP	10	7	3	8	3	5	2	1	1	5	2	3
Palmerston	0	0	0	0	0	0	0	0	0	0	0	0
Pukapuka/Nassau	9	6	3	8	3	5	2	1	1	5	2	3
Manihiki	1	1	0	0	0	0	0	0	0	0	0	0
Rakahanga	0	0	0	0	0	0	0	0	0	0	0	0
Penrhyn	0	0	0	0	0	0	0	0	0	0	0	0

**Table 2.3: Mothers given Birth by Region & Island and Age of Mother
COOK ISLANDS 2015**

REGION & ISLAND	Total	Age of Mother							
		< 15	15-19	20-24	25-29	30-34	35-39	40-44	45 +
COOK ISLANDS	216	0	24	59	53	45	21	13	1
RAROTONGA	201	0	22	55 ^a	50 ^a	41	20	12	1
SOUTHERN GROUP excluding Rarotonga	10	0	1	3	2	2	1	1	0
Aitutaki	9	0	1	2	2	2	1	1	0
Mangaia	0	0	0	0	0	0	0	0	0
Atiu	1	0	0	1	0	0	0	0	0
Mauke	0	0	0	0	0	0	0	0	0
Mitiaro	0	0	0	0	0	0	0	0	0
NORTHERN GROUP	5	0	1	1	1	2	0	0	0
Palmerston	0	0	0	0	0	0	0	0	0
Pukapuka/Nassau	5	0	1	1	1	2	0	0	0
Manihiki	0	0	0	0	0	0	0	0	0
Rakahanga	0	0	0	0	0	0	0	0	0
Penrhyn	0	0	0	0	0	0	0	0	0

Note: ^a Denote 1 pair of twins.

**Table 2.4: Mothers given Birth by Region & Island and Age of Mother
COOK ISLANDS 2014**

REGION & ISLAND	Total	Age of Mother							
		< 15	15-19	20-24	25-29	30-34	35-39	40-44	45 +
COOK ISLANDS	223	0	31	54	57	49	21	11	0
RAROTONGA	209	0	31	51	51	45	20	11	0
SOUTHERN GROUP excluding Rarotonga	12	0	0	2	5	4	1	0	0
Aitutaki	10	0	0	2	5	3	0	0	0
Mangaia	1	0	0	0	0	1	0	0	0
Atiu	1	0	0	0	0	0	1	0	0
Mauke	0	0	0	0	0	0	0	0	0
Mitiaro	0	0	0	0	0	0	0	0	0
NORTHERN GROUP	2	0	0	1	1	0	0	0	0
Palmerston	0	0	0	0	0	0	0	0	0
Pukapuka/Nassau	2	0	0	1	1	0	0	0	0
Manihiki	0	0	0	0	0	0	0	0	0
Rakahanga	0	0	0	0	0	0	0	0	0
Penrhyn	0	0	0	0	0	0	0	0	0

Note: ^a Denote 1 pair of twins.

**Table 2.5: Mothers given Birth by Region & Island and Age of Mother
COOK ISLANDS 2013**

REGION & ISLAND	Total	Age of Mother							
		< 15	15-19	20-24	25-29	30-34	35-39	40-44	45 +
COOK ISLANDS	260	3	37	75	65	38	31	10	1
RAROTONGA	226	3	35 ^a	66	51	34	28	8	1
SOUTHERN GROUP excluding Rarotonga	26	0	2	7	10	2	3	2	0
Aitutaki	22	0	2	6	8	2	2	2	0
Mangaia	3	0	0	1	1	0	1	0	0
Atiu	1	0	0	0	1	0	0	0	0
Mauke	0	0	0	0	0	0	0	0	0
Mitiaro	0	0	0	0	0	0	0	0	0
NORTHERN GROUP	8	0	0	2	4	2	0	0	0
Palmerston	0	0	0	0	0	0	0	0	0
Pukapuka/Nassau	8	0	0	2	4	2	0	0	0
Manihiki	0	0	0	0	0	0	0	0	0
Rakahanga	0	0	0	0	0	0	0	0	0
Penrhyn	0	0	0	0	0	0	0	0	0

Note: ^a Denote 1 pair of twins.

**Table 2.6: Mothers Given Birth and Fertility Rates by Age Groupings
COOK ISLANDS 2007 - 2015**

Age Group	Female Resident Population		Number of Mothers								
	2006	2011	2007	2008	2009	2010	2011	2012	2013	2014	2015
15-19	630	597	37	35	54	37	37	41	40	31	24
20-24	545	512	97	82	72	85	70	80	76	54	59
25-29	473	493	72	72	67	55	71	65	64	57	53
30-34	554	462	68	60	45	57	47	56	38	49	45
35-39	551	521	26	33	37	38	40	33	31	21	21
40-44	540	542	19	14	7	17	17	16	10	11	13
45-49	457	528	2	0	0	2	1	0	1	0	1
Total	3,750	3,655	321	296	282	291	283	291	260	223	216
Age-Specific Fertility Rate (per 1'000 Women)											
15-19			59	56	86	59	62	69	67	52	40
20-24			178	150	132	156	137	156	148	105	115
25-29			152	152	142	116	144	132	130	116	108
30-34			123	108	81	103	102	121	82	106	97
35-39			47	60	67	69	77	63	60	40	40
40-44			35	26	13	31	31	30	18	20	24
45-49			4	0	0	4	2	0	2	0	2
General Fertility Rate (per 1'000 Women)			86	79	75	78	77	80	71	61	59
Total Fertility Rate			3.0	2.8	2.6	2.7	2.8	2.9	2.5	2.2	2.1

GFR = Total Number of Births/Female Population of CBA (15-49).

TFR = The average number of children that would be born alive to a woman during her childbearing years in her lifetime.

Note: Mothers whose age is < 15 are included in the 15-19 age groups, those whose age is > 49 are included in the 45-49 age groups.

**Table 2.7: Suspected cases of notifiable diseases by year
COOK ISLANDS 2011-2015**

Disease	2011	2012	2013	2014	2015
Acute Respiratory Infection	7,076	9,879	9,181	9,933	9,235
Asthma	102	116	84	52	31
Bronchitis	546	450	465	450	335
Chickenpox	22	44	37	51	19
Chikungunya					11
Conjunctivitis	842	246	199	152	131
Dengue	0	6	4	5	0
Diarrhoea child/adult	128	260	221	182	143
Diarrhoea infant	11	19	17	5	7
Fish Poisoning	102	90	90	65	41
Food Poisoning	30	46	40	34	28
Gastroenteritis	683	1,085	725	653	564
Influenza & Viral Illness	648	420	514	420	324
Measles	0	0	1	0	0
Meningitis	2	0	2	1	0
Mumps	4	4	5	1	0
Otitis Media	226	300	270	268	317
Pneumonia	505	901	813	725	537
Rheumatic fever (acute & chronic)	18	40	15	7	10
Scabies	216	285	317	162	140
Skin Sepsis	1,363	2,032	2,746	1,152	938
Whooping Cough (Pertussis)	7	7	4	0	0

Note: Diphtheria, Filariasis, Leprosy and Yaws are excluded due to zero values in this 5 years reported

**Table 2.8: Ciguatera (Fish poisoning) cases seen by year and month
COOK ISLANDS 2000-2015**

Year	MONTH												TOTAL
	Jan	Feb	Mar	Apr	May	Jun	Jul	Aug	Sep	Oct	Nov	Dec	
2000	9	14	17	9	14	11	0	5	15	9	24	11	138
2001	13	24	7	8	7	6	7	17	13	15	12	4	133
2002	32	25	18	22	19	7	3	4	9	22	13	9	183
2003	20	20	16	28	12	14	5	9	22	19	33	29	227
2004	65	40	45	44	47	23	26	33	39	22	46	39	469
2005	25	17	49	59	50	41	29	33	26	32	31	29	421
2006	25	16	27	27	20	13	12	15	30	31	24	18	258
2007	24	25	20	27	27	23	18	12	20	24	7	18	245
2008	28	36	15	14	20	13	14	14	17	19	18	15	223
2009	19	13	13	9	11	8	7	8	5	11	16	9	129
2010	5	10	10	7	11	9	11	2	4	1	5	3	78
2011	5	3	9	20	8	4	13	10	6	9	6	9	102
2012	10	13	4	4	6	5	6	6	8	11	12	5	90
2013	11	8	6	13	0	3	6	6	4	8	21	4	90
2014	6	8	5	4	2	1	3	2	12	6	7	9	65
2015	4	5	3	2	1	2	1	3	6	4	5	5	41

Table 2.9: Inpatient morbidity (diseases) by main group, year and sex

COOK ISLANDS 2013 - 2015

ICD 10 Code	CAUSE	2013		2014		2015	
		Male	Female	Male	Female	Male	Female
	Admissions	809	1,047	826	964	696	955
A00-B99	I Certain infectious and parasitic diseases	29	47	47	41	66	54
C00-D48	II Neoplasms	15	11	29	4	12	5
D50-D89	III Diseases of blood & blood-forming organs & certain disorders involving the immune mechanism	12	11	12	13	10	21
E00-E90	IV Endocrine, nutritional and metabolic diseases	54	59	70	57	73	66
F00-F99	V Mental and behavioural disorders	40	20	35	6	20	11
G00-G99	VI Diseases of the nervous system	9	14	10	19	14	14
H00-H59	VII Diseases of the eye and adnexa	27	41	28	31	11	22
H60-H95	VIII Diseases of the ear and mastoid process	1	2	2	0	1	3
I00-I99	IX Diseases of the circulatory system	220	155	200	169	216	170
J00-J99	X Diseases of the respiratory system	124	133	81	95	134	131
K00-K93	XI Diseases of the digestive system	61	44	65	56	54	41
L00-L99	XII Diseases of the skin and subcutaneous tissue	48	29	44	33	41	33
M00-M99	XIII Diseases of the musculoskeletal system and connective tissue	31	8	28	5	21	7
N00-N99	XIV Diseases of the genitourinary system	25	45	35	46	24	42
O00-O99	XV Pregnancy, childbirth and the puerperium	0	309	0	281	0	229
P00-P96	XVI Certain conditions originating in the perinatal period	2	1	0	0	0	4
Q00-Q99	XVII Congenital malformations, deformations and chromosomal abnormalities	0	1	0	0	0	1
R00-R99	XVIII Symptoms, signs and abnormal clinical and laboratory findings, not elsewhere classified	32	42	55	43	73	78
S00-T98	XIX Injury, poisoning and certain other consequences of external causes	110	61	156	83	76	65
V01-Y98	XX External causes of morbidity and mortality	71	35	59	48	26	24
Z00-Z99	XXI Factors influencing health status and contact with health services	3	12	0	0	1	4

Table 2.10: Ten Leading Causes of Inpatient Morbidity by Sex

COOK ISLANDS: 2015

Rank	CAUSE	Both			%
		Male	Female	Sexes	
	ALL CAUSES	658	576	1,234	74.7
1	Heart diseases	152	98	250	15.1
2	Other diseases of the respiratory system	103	95	198	12.0
3	Injury, poisoning & certain other consequences of external causes	76	65	141	8.5
4	Hypertensive diseases	64	69	133	8.1
5	Certain infectious and parasitic diseases	66	54	120	7.3
6	Diseases of the digestive system	54	41	95	5.8
7	Diabetes mellitus	47	43	90	5.5
8	Diseases of the skin and subcutaneous tissue	41	33	74	4.5
9	Chronic lower respiratory diseases	31	36	67	4.1
10	Diseases of the genitourinary system	24	42	66	4.0

**Table 2.11: Ten Leading Causes of Inpatient Morbidity by Sex
COOK ISLANDS: 2014**

Rank	CAUSE	Both			%
		Male	Female	Sexes	
	ALL CAUSES	679	568	1,247	69.7
1	Injury, poisoning & certain other consequences of external causes	156	83	239	13.4
2	Heart diseases	122	99	221	12.3
3	Hypertensive diseases	70	66	136	7.6
4	Diseases of the digestive system	65	56	121	6.8
5	Other diseases of the respiratory system	60	58	118	6.6
6	Diabetes mellitus	59	49	108	6.0
7	Certain infectious and parasitic diseases	47	41	88	4.9
8	Diseases of the genitourinary system	35	46	81	4.5
9	Diseases of the skin and subcutaneous tissue	44	33	77	4.3
10	Chronic lower respiratory diseases	21	37	58	3.2

**Table 2.12: Ten Leading Causes of Inpatient Morbidity by Sex
COOK ISLANDS: 2013**

Rank	CAUSE	Both			%
		Male	Female	Sexes	
	ALL CAUSES	659	554	1,213	65.4
1	Heart diseases	143	77	220	11.9
2	Other diseases of the respiratory system	96	104	200	10.8
3	Injury, poisoning & certain other consequences of external causes	110	61	171	9.2
4	Hypertensive diseases	72	77	149	8.0
5	Diseases of the digestive system	61	44	105	5.7
6	Diabetes mellitus	47	41	88	4.7
7	Diseases of the skin and subcutaneous tissue	48	29	77	4.1
8	Certain infectious and parasitic diseases	29	47	76	4.1
9	Diseases of the genitourinary system	25	45	70	3.8
10	Chronic lower respiratory diseases	28	29	57	3.1

Table 2.13: Inpatient Morbidity by Sex and Age Groupings
COOK ISLANDS: 2015

ICD10 CODE	DISEASE	Sex: MALE										Sex: FEMALE									
		0-4	5-14	15-24	25-34	35-44	45-54	55-64	65-74	75+	Total	0-4	5-14	15-24	25-34	35-44	45-54	55-64	65-74	75+	Total
A00-B99	I Certain infectious and parasitic diseases	20	11	3	3	6	3	3	8	10	67	13	5	10	9	2	5	1	8	7	60
	A00-A09 Intestinal and infectious diseases	17	8	1	2	3	3	3	6	6	46	7	3	3	7	2	3	1	6	4	36
	A33-A35 Tetanus	0	0	0	0	0	0	0	1	0	1	0	0	0	2	0	0	0	0	0	2
	A40-A41 Septicaemia	0	0	0	0	0	0	0	1	2	3	0	0	0	2	0	0	0	0	0	2
	A90-A94, A96-A99 Other arthropod borne viral fevers and viral haemorrhagic fevers	2	3	1	0	2	0	0	2	2	12	4	2	5	0	0	1	0	2	2	16
	Remainder of certain infectious and parasitic diseases	1	0	1	1	1	0	0	1	0	5	2	0	2	0	0	1	0	0	1	6
C00-D48	II Neoplasms	0	0	0	0	0	1	0	5	6	12	0	0	0	0	0	0	0	4	1	5
	C15 Malignant neoplasm of oesophagus	0	0	0	0	0	0	0	0	1	1	0	0	0	0	0	0	0	1	0	1
	C16 Malignant neoplasm of stomach	0	0	0	0	0	0	0	1	0	1	0	0	0	0	0	0	0	0	1	1
	C18-C21 Malignant neoplasm of colon, rectum and anus	0	0	0	0	0	0	0	1	0	1	0	0	0	0	0	0	0	0	1	1
	C22 Malignant neoplasm of liver and intrahepatic bile ducts	0	0	0	0	0	1	0	1	0	2	0	0	0	0	0	0	0	1	0	1
	C33-C34 Malignant neoplasm of trachea, bronchus and lung	0	0	0	0	0	0	0	0	1	1	0	0	0	0	0	0	0	1	0	1
	C50 Malignant neoplasm of breast	0	0	0	0	0	0	0	0	0	0	0	0	0	0	0	0	0	2	0	2
	C61 Malignant neoplasm of prostate	0	0	0	0	0	0	0	3	4	7	0	0	0	0	0	1	0	1	1	3
	Other	0	0	0	0	0	0	0	0	0	0	0	0	0	0	0	1	0	1	1	3
D50-D89	III Diseases of the blood & blood forming organs & certain disorders involving the immune mechanism	0	0	0	0	0	2	1	2	4	10	0	0	2	0	2	2	2	9	2	21
	D50-D64 Anaemias	0	0	0	0	0	2	1	2	4	9	0	0	2	0	2	2	2	9	2	19
	Remainder of the blood & blood forming organs & certain disorders	0	0	0	0	0	0	0	0	1	1	0	0	0	0	0	0	0	2	0	2
E00-E90	IV Endocrine, nutritional & metabolic diseases & immunity disorders	1	0	2	5	4	17	12	18	14	73	1	0	0	3	4	8	9	20	21	66
	E10-E14 Diabetes mellitus	0	0	1	1	2	13	8	12	10	47	0	0	0	2	3	5	6	17	10	43
	Remainder of endocrine, nutritional and metabolic diseases	1	0	1	4	2	4	4	6	4	26	1	0	0	1	1	3	3	3	11	23
F00-F99	V Mental and behavioural disorders	0	0	6	6	3	1	1	1	2	20	0	0	1	3	1	0	1	1	4	11
	F10-F19 Mental & behavioural disorders due to psychoactive substance use	0	0	6	3	2	1	0	0	0	12	0	0	1	3	0	0	0	0	0	4
	Remainder of mental and behavioural disorders	0	0	0	3	1	0	1	1	2	8	0	0	0	0	1	0	1	1	4	7
G00-G98	VI Diseases of the nervous system	0	2	0	1	4	2	2	1	2	14	0	7	1	1	0	1	2	2	0	14
H00-H59	VII Diseases of the eye and adnexa	0	0	1	0	1	0	4	0	5	11	0	0	0	0	0	1	4	6	11	22
H60-H95	VIII Diseases of the ear and mastoid process	0	0	0	0	0	0	1	0	0	1	0	0	1	1	1	0	0	0	0	3
I00-I99	IX Diseases of the circulatory system	0	0	2	1	16	40	51	47	59	216	0	0	2	9	6	19	20	44	70	170
	I10-I15 Hypertensive diseases	0	0	0	0	4	13	17	16	14	64	0	0	0	5	5	15	7	18	19	69
	I20-I25 Ischaemic heart diseases	0	0	2	0	3	2	7	5	6	25	0	0	0	2	0	1	4	5	9	21
	I26-I52 Other heart diseases	0	0	0	1	8	21	19	21	33	103	0	0	2	1	1	3	8	17	35	67
	I60-I69 Cerebrovascular diseases	0	0	0	0	0	3	7	4	6	20	0	0	0	0	0	0	1	4	5	10
	Remainder of diseases of the circulatory system	0	0	0	0	1	1	1	1	0	4	0	0	0	1	0	0	0	0	2	3
J00-J99	X Diseases of the respiratory system	48	22	4	4	2	7	12	13	22	134	29	14	13	8	5	9	17	15	21	131
	J00-J06 Acute respiratory infections	2	6	1	1	0	2	0	3	6	21	5	7	7	4	2	4	6	2	4	41
	J12-J18 Pneumonia	6	5	2	2	0	3	1	2	5	26	5	1	1	1	0	1	4	2	4	19
	J20-J22 Other acute lower respiratory infections	24	0	0	0	0	0	1	0	1	26	10	0	0	0	1	0	0	0	0	11
	J30-J39 Other diseases of upper respiratory tract	0	1	0	1	0	2	3	2	5	14	0	1	0	0	1	1	0	2	4	9
	J40-J47 Chronic lower respiratory diseases	12	6	0	0	0	0	7	3	3	31	4	4	5	1	2	2	5	7	6	36
	Remainder of diseases of the respiratory system	4	4	1	0	2	0	0	3	2	16	5	1	0	1	0	1	2	3	3	15
K00-K93	XI Diseases of the digestive system	2	5	3	5	4	5	8	12	10	54	1	1	8	8	9	3	5	2	4	41
	K25-K27 Gastric and duodenal ulcer	0	0	0	0	0	0	1	4	2	7	0	0	0	0	0	0	0	1	0	1
	K35-K38 Diseases of appendix	0	4	1	2	2	1	1	2	3	16	0	0	4	5	5	2	2	1	1	20
	K40-K46 Hernia	2	1	1	1	1	1	3	3	1	14	0	0	0	0	2	1	2	0	1	6
	K70-K77 Diseases of the liver	0	0	0	0	0	0	0	1	2	3	0	0	0	0	0	0	0	0	0	0
	Remainder of diseases of the digestive system	0	0	1	2	1	3	3	2	2	14	1	1	4	3	2	0	1	0	2	14
L00-L99	XII Diseases of the skin and subcutaneous tissue	1	3	5	5	2	6	11	5	3	41	3	3	3	0	3	3	3	7	8	33
M00-M99	XIII Diseases of the musculoskeletal system and connective tissue	0	3	1	3	0	2	6	4	2	21	0	1	1	0	3	0	0	1	1	7
N00-N99	XIV Diseases of the genitourinary system	1	1	0	0	1	4	3	4	10	24	0	3	5	9	3	7	3	6	6	42
	N00-N16 Glomerular & renal tubulo-interstitial diseases	1	1	0	0	0	0	1	0	3	3	0	2	2	2	0	1	0	0	0	7
	Remainder of diseases of the genitourinary system	0	0	0	0	1	4	3	3	10	21	0	1	3	7	3	6	3	6	6	35
O00-O99	XV Pregnancy, childbirth and the puerperium	0	0	0	0	0	0	0	0	0	0	0	0	86	103	38	2	0	0	0	229
	O00-O07 Pregnancy with abortive outcome	0	0	0	0	0	0	0	0	0	0	0	0	8	4	7	2	0	0	0	21
	O10-O16 Oedema, proteinuria & hypertensive disorders in pregnancy, childbirth and the puerperium	0	0	0	0	0	0	0	0	0	0	0	0	0	2	0	0	0	0	0	2
	O20-O29 Other maternal disorders predominantly related to pregnancy	0	0	0	0	2	1	0	0	0	3	0	0	0	2	1	0	0	0	0	3
	O30-O48 Maternal care related to the fetus & amniotic cavity and possible delivery problems	0	0	0	1	2	0	0	0	0	3	0	0	1	2	0	0	0	0	0	3
	O60-O75 Complications of labour and delivery	0	0	0	5	8	1	0	0	0	14	0	0	5	8	1	0	0	0	0	14
	O80-O84 Delivery	0	0	0	72	85	29	0	0	0	186	0	0	72	85	29	0	0	0	0	186
P00-P99	XVI Certain conditions originating in the perinatal period	0	0	0	0	0	0	0	0	0	0	0	0	2	1	1	0	0	0	0	4
R00-R99	XVIII Symptoms, signs and abnormal clinical and laboratory findings, nec	8	8	3	10	9	7	7	12	9	73	12	11	5	7	7	11	5	11	9	78
S00-T98	XIX Injury, poisoning & certain other consequences of external causes	6	17	16	11	3	12	4	2	4	76	7	13	19	4	1	2	5	10	4	65
	S00-S09 Injuries to the head	2	5	12	4	0	4	0	0	0	27	3	4	5	1	0	0	1	4	1	19
	S40-S69 Injuries to the shoulder, upper arm, elbow, forearm, wrist & hand	3	2	1	3	0	3	0	0	1	13	0	2	3	0	0	0	0	0	1	6
	S70-S99 Injuries to the hip, thigh, knee, lower leg, ankle and foot	0	5	2	3	0	2	1	1	2	16	1	6	5	0	1	2	4	3	2	24
	T00-T07 Injuries involving multiple body regions	0	0	1	0	0	0	1	0	0	2	0	0	3	0	0	0	0	0	0	3
	T20-T32 Burns and corrosions	0	0	0	0	1	0	1	0	0	2	2	0	0	0	0	0	0	1	0	3
	T36-T50 Poisoning by drugs, medicaments and biological substances	0	0	1	0	0	0	0	0	0	0	0	1	0	0	0	0	0	0	0	1

Table 2.14: Inpatient Morbidity by Sex and Age Groupings
COOK ISLANDS: 2014

ICD10 CODE	DISEASE	Sex: MALE										Sex: FEMALE									
		0-4	5-14	15-24	25-34	35-44	45-54	55-64	65-74	75+	Total	0-4	5-14	15-24	25-34	35-44	45-54	55-64	65-74	75+	Total
A00-B99	I Certain infectious and parasitic diseases	8	3	4	6	1	3	5	10	7	47	7	0	5	3	10	4	2	6	4	41
	A00-A09 Intestinal and infectious diseases	6	1	1	5	0	0	4	4	4	25	6	0	5	2	3	4	0	3	4	27
	A40-A41 Septicaemia	0	0	0	0	0	1	0	5	1	7	0	0	0	0	1	0	0	2	0	3
	A90-A94, A96-A99 Other arthropod borne viral fevers and viral haemorrhagic fevers	1	1	2	1	1	1	1	1	2	11	0	0	0	0	6	0	2	1	0	9
	Other viral diseases	1	1	1	0	0	1	0	0	0	4	1	0	0	1	0	0	0	0	0	2
C00-D48	II Neoplasms	0	0	0	0	0	4	4	1	20	29	0	0	0	0	0	1	2	1	0	4
	C18-C21 Malignant neoplasm of colon, rectum and anus	0	0	0	0	0	0	0	0	1	1	0	0	0	0	0	0	0	1	0	1
	C22 Malignant neoplasm of liver and intrahepatic bile ducts	0	0	0	0	0	3	1	0	1	5	0	0	0	0	0	0	0	1	0	1
	C25 Malignant neoplasm of pancreas	0	0	0	0	0	0	1	1	1	3	0	0	0	0	0	0	0	0	0	0
	C33-C34 Malignant neoplasm of trachea, bronchus and lung	0	0	0	0	0	1	2	0	1	4	0	0	0	0	0	0	1	0	0	1
	C50 Malignant neoplasm of breast	0	0	0	0	0	0	0	0	1	1	0	0	0	0	0	1	1	0	0	2
	C61 Malignant neoplasm of prostate	0	0	0	0	0	0	0	0	14	14	0	0	0	0	0	0	0	0	0	0
	C69-C80 Malignant neoplasm of other and unspecified site	0	0	0	0	0	0	0	0	1	1	0	0	0	0	0	0	0	0	0	0
D50-D89	III Diseases of the blood & blood forming organs & certain disorders involving the immune mechanism	0	0	0	0	0	1	5	1	5	12	0	0	0	4	3	3	0	1	2	13
	D50-D64 Anaemias	0	0	0	0	0	1	5	1	5	12	0	0	0	4	3	3	0	1	2	13
E00-E90	IV Endocrine, nutritional & metabolic diseases & immunity disorders	1	0	3	1	0	11	13	15	26	70	1	1	1	4	3	8	13	8	18	57
	E10-E14 Diabetes mellitus	0	0	2	1	0	11	11	14	20	59	0	0	1	4	2	8	10	8	16	49
	Remainder of endocrine, nutritional and metabolic diseases	1	0	1	0	0	0	2	1	6	11	1	1	0	0	1	0	3	0	2	8
F00-F99	V Mental and behavioural disorders	0	0	9	9	6	5	4	0	2	35	0	0	1	1	2	1	0	0	1	6
	F10-F19 Mental & behavioural disorders due to psychoactive substance use	0	0	9	6	3	4	3	0	1	26	0	0	1	1	1	0	0	0	0	3
	Remainder of mental and behavioural disorders	0	0	0	3	3	1	1	0	1	9	0	0	0	0	1	1	0	0	1	3
G00-G98	VI Diseases of the nervous system	0	0	0	2	4	0	1	2	1	10	0	10	0	2	0	2	3	2	0	19
	G30 Alzheimer's disease	0	0	0	0	0	0	0	1	0	1	0	0	0	0	0	0	0	1	0	1
	Remainder of diseases of the nervous system	0	0	0	2	4	0	1	1	1	9	0	10	0	2	0	2	3	1	0	18
H00-H59	VII Diseases of the eye and adnexa	0	0	0	0	0	2	4	11	11	28	0	0	0	0	1	4	5	13	8	31
H60-H95	VIII Diseases of the ear and mastoid process	1	0	0	1	0	0	0	0	0	2	0	0	0	0	0	0	0	0	0	0
I00-I99	IX Diseases of the circulatory system	0	2	1	2	5	27	41	41	81	200	0	0	3	3	15	25	22	29	72	169
	I00-I09 Acute Rheumatic fever and chronic rheumatic heart diseases	0	0	0	0	0	0	0	0	0	0	0	0	0	0	2	0	0	0	0	2
	I10-I15 Hypertensive diseases	0	1	0	0	2	12	16	12	27	70	0	0	1	1	6	12	13	11	22	66
	I20-I25 Ischaemic heart diseases	0	0	0	1	0	6	4	11	8	30	0	0	0	0	1	3	3	5	12	24
	I26-I52 Other heart diseases	0	1	0	1	2	9	15	15	34	77	0	0	1	2	4	9	6	12	27	61
	I60-I69 Cerebrovascular diseases	0	0	0	0	0	4	3	8	15	30	0	0	1	0	1	1	0	1	8	12
	Remainder of diseases of the circulatory system	0	0	1	0	1	0	2	0	4	8	0	0	0	0	1	0	0	0	3	4
J00-J99	X Diseases of the respiratory system	21	7	0	4	3	8	6	13	19	81	17	4	10	5	7	11	10	14	17	95
	J00-J06 Acute respiratory infections	0	2	0	1	1	1	0	1	1	7	3	0	3	3	2	3	0	0	0	14
	J12-J18 Pneumonia	3	0	0	3	1	5	1	3	10	26	0	1	3	1	2	3	1	2	4	17
	J20-J22 Other acute lower respiratory infections	15	2	0	0	0	0	0	0	1	18	9	0	1	0	0	0	0	0	0	10
	J40-J47 Chronic lower respiratory diseases	1	2	0	0	0	1	3	9	5	21	3	2	1	1	2	4	8	8	8	37
	Remainder of diseases of the respiratory system	2	1	0	0	1	1	1	1	2	9	2	1	2	0	1	1	1	4	5	17
K00-K93	XI Diseases of the digestive system	1	6	7	2	11	11	9	12	6	65	0	3	9	13	12	9	4	2	4	56
	K25-K27 Gastric and duodenal ulcer	0	0	1	0	0	0	0	1	1	3	0	0	0	2	0	0	0	1	0	3
	K35-K38 Diseases of appendix	0	3	5	1	6	4	3	2	0	24	0	3	9	6	3	4	2	0	0	27
	K40-K46 Hernia	1	3	1	1	2	4	4	4	4	24	0	0	0	1	1	2	0	0	0	4
	K70-K77 Diseases of the liver	0	0	0	0	0	1	1	0	0	2	0	0	0	0	0	0	0	0	0	0
	Remainder of diseases of the digestive system	0	0	0	0	3	2	1	5	1	12	0	0	0	4	8	3	2	1	4	22
L00-L99	XII Diseases of the skin and subcutaneous tissue	3	1	2	2	2	4	10	9	11	44	1	0	3	1	3	7	5	9	4	33
M00-M99	XIII Diseases of the musculoskeletal system and connective tissue	0	2	2	2	3	4	2	9	4	28	0	0	1	2	0	1	1	0	0	5
N00-N99	XIV Diseases of the genitourinary system	1	1	1	1	2	7	5	7	10	35	0	3	6	11	5	5	3	9	4	46
	N00-N16 Glomerular & renal tubulo-interstitial diseases	1	1	0	0	0	2	1	0	0	5	0	3	1	0	3	1	0	0	0	8
	Remainder of diseases of the genitourinary system	0	0	1	1	2	5	4	7	10	30	0	0	5	11	2	4	3	9	4	38
O00-O99	XV Pregnancy, childbirth and the puerperium	0	0	0	0	0	0	0	0	0	0	0	0	100	119	59	3	0	0	0	281
	O00-O07 Pregnancy with abortive outcome	0	0	0	0	0	0	0	0	0	0	0	0	14	8	7	1	0	0	0	30
	O10-O16 Oedema, proteinuria & hypertensive disorders in pregnancy, childbirth and the puerperium	0	0	0	0	0	0	0	0	0	0	0	0	0	1	1	0	0	0	0	2
	O20-O29 Other maternal disorders predominantly related to pregnancy	0	0	0	0	0	0	0	0	0	0	0	0	6	6	6	0	0	0	0	18
	O30-O48 Maternal care related to the fetus & amniotic cavity and possible delivery problems	0	0	0	0	0	0	0	0	0	0	0	0	5	3	2	0	0	0	0	10
	O60-O75 Complications of labour and delivery	0	0	0	0	0	0	0	0	0	0	0	0	7	8	2	0	0	0	0	17
	O80-O84 Delivery	0	0	0	0	0	0	0	0	0	0	0	0	68	93	41	2	0	0	0	204
R00-R99	XVIII Symptoms, signs and abnormal clinical and laboratory findings, nec	9	6	3	5	4	6	7	7	8	55	4	5	8	3	4	4	6	4	5	43
S00-T98	XIX Injury, poisoning & certain other consequences of external causes	6	17	36	20	22	19	20	11	5	156	1	7	28	8	7	10	10	5	7	83
	S00-S09 Injuries to the head	2	3	13	6	5	1	7	0	3	40	0	5	14	4	1	1	1	1	1	28
	S10-S29 Injuries to the neck and the thorax	0	0	0	0	1	0	0	0	0	1	0	0	0	0	0	0	0	0	0	0
	S30-S39 Injuries to the abdomen, lower back, lumbar spine and pelvis	0	0	0	0	1	0	0	1	1	3	0	0	2	0	0	0	1	0	2	5
	S40-S69 Injuries to the shoulder, upper arm, elbow, forearm, wrist & hand	0	9	8	4	8	7	2	1	0	39	1	2	2	2	0	2	1	3	2	15
	S70-S99 Injuries to the hip, thigh, knee, lower leg, ankle and foot	1	4	10	6	4	8	7	8	0	48	0	0	6	2	3	6	7	1	2	27
	T00-T07 Injuries involving multiple body regions	0	0	2	3	0	0	1	0	0	6	0	0	3	0	1	0	0	0	0	4
	T20-T32 Burns and corrosions	0	1	0	0	0	0	0	1	0	2	0	0	0	0	0	0	0	0	0	0
	T36-T50 Poisoning by drugs, medicaments and biological substances	1	0	1	0	0	0	0	0	0	2	0	0	0	0	2	0	0	0	0	2
	T51-T65 Toxic effects of substances chiefly nonmedicinal as to source	2	0	1	1	2	3	3	0	1	13	0	0	1	0	0	1	0	0	0	2
	T66-T78 Other and unspecified effects of external causes	0	0	1	0	1	0	0	0	0	2	0	0	0	0	0	0	0	0	0	0
V01-Y98	XX External causes of morbidity and mortality	2	5	21	9	2	8	7	2	3	59	0	7	18	11	1	3	3	3	2	48
	V20-V29 Motorcycle rider injured in transport accident	0	1	18	9	1	6	5	1	1	42	0	3	16	7	1	3	2	1	0	33
	V40-V49 Car occupant injured in transport accident	0	0	0	0	0	0	0	0	1	1	0	0	0	0	0	0	0	0	0	0
	V50-V59 Occupant of pick-up truck or van injured in transport accident	0	0	0	0	0	0	0	0	0	0	0	2	0	0	0	0	0	0	0	2
	W00-W19 Falls	2	4	0	0	1	1	1	1	1	11	0	2	2	1	0	0	1	2	1	9
	W65-W74 Accidental drowning and submersion	0	0	0	0	0	0	0	0	0	0	0	0	0	0	0	0	0	0	0	0
	X60-X84 Intentional self-harm	0	0	1	0	0	0	0	0	0	1	0	0	0	1	0	0	0	0	0	1
	X85-Y09 Assault	0	0	2	0	0	1	1	0	0	4	0	0	0	2	0	0	0	0		

Table 2.15: Inpatient Morbidity by Sex and Age Groupings
COOK ISLANDS: 2013

ICD10 CODE	DISEASE	Sex: MALE										Sex: FEMALE									
		0-4	5-14	15-24	25-34	35-44	45-54	55-64	65-74	75+	Total	0-4	5-14	15-24	25-34	35-44	45-54	55-64	65-74	75+	Total
A00-B99 I	Certain infectious and parasitic diseases	3	4	0	3	6	3	1	3	6	29	9	3	7	5	4	5	6	4	4	47
A00-A09	Intestinal and infectious diseases	3	3	0	3	4	3	0	2	4	22	7	2	5	3	3	3	5	4	4	36
A40-A41	Septicaemia	0	1	0	0	1	0	1	1	0	4	0	0	0	0	0	0	0	0	0	0
A50-A89	Viral diseases	0	0	0	0	1	0	0	0	1	2	0	0	1	1	0	2	0	0	0	4
A90-A94, A96-A99	Other arthropod borne viral fevers and viral haemorrhagic fevers	0	0	0	0	0	0	0	0	1	1	2	0	1	0	1	0	1	0	0	5
	Remainder of certain infectious and parasitic diseases	0	0	0	0	0	0	0	0	0	0	0	1	0	1	0	0	0	0	0	2
C00-D48 II	Neoplasms	0	0	0	0	0	0	1	3	10	14	0	0	0	0	0	3	0	1	7	11
C18-C21	Malignant neoplasm of colon, rectum and anus	0	0	0	0	0	0	0	0	1	1	0	0	0	0	0	1	0	0	0	1
C22	Malignant neoplasm of liver and intrahepatic bile ducts	0	0	0	0	0	0	1	0	1	2	0	0	0	0	0	0	0	0	0	0
C25	Malignant neoplasm of pancreas	0	0	0	0	0	0	0	0	1	1	0	0	0	0	0	0	0	0	0	0
C33-C34	Malignant neoplasm of trachea, bronchus and lung	0	0	0	0	0	0	0	0	1	1	0	0	0	0	0	0	0	0	4	4
C50	Malignant neoplasm of breast	0	0	0	0	0	0	0	0	0	0	0	0	0	0	0	2	0	0	1	3
C53	Malignant neoplasm of cervix uteri	0	0	0	0	0	0	0	0	0	0	0	0	0	0	0	0	0	0	2	2
C61	Malignant neoplasm of prostate	0	0	0	0	0	0	0	3	6	9	0	0	0	0	0	0	0	0	0	0
C91-C95	Leukaemias	0	0	0	0	0	0	0	0	0	0	0	0	0	0	0	0	0	1	0	1
	Remainder of neoplasms	0	0	0	0	0	0	0	0	1	1	0	0	0	0	0	0	0	0	0	0
D50-D89 III	Diseases of the blood & blood forming organs & certain disorders involving the immune mechanism	0	1	0	0	1	1	2	1	6	12	0	0	0	2	4	3	1	0	1	11
E00-E90 IV	Endocrine, nutritional & metabolic diseases & immunity disorders	0	0	0	0	1	6	8	18	21	54	2	1	0	3	5	8	11	12	17	59
E10-E14	Diabetes mellitus	0	0	0	0	1	6	7	18	15	47	0	0	0	3	4	3	8	10	13	41
	Remainder of endocrine, nutritional and metabolic diseases	0	0	0	0	0	0	1	0	6	7	2	1	0	0	1	5	3	2	4	18
F00-F99 V	Mental and behavioural disorders	0	0	10	10	3	6	3	1	7	40	0	0	4	3	2	4	2	0	5	20
F10-F19	Mental & behavioural disorders due to psychoactive substance use	0	0	10	10	1	4	1	1	1	27	0	0	3	2	0	0	1	0	0	6
	Remainder of mental and behavioural disorders	0	0	0	0	2	2	2	0	7	13	0	0	1	1	2	4	1	0	5	14
G00-G98 VI	Diseases of the nervous system	0	1	1	0	3	1	0	3	0	9	0	9	1	2	0	2	0	0	0	14
H00-H59 VII	Diseases of the eye and adnexa	0	0	0	0	1	1	5	6	14	27	1	0	1	0	1	1	8	14	15	41
H60-H95 VIII	Diseases of the ear and mastoid process	0	1	0	0	0	0	0	0	0	1	0	2	0	0	0	0	0	0	0	2
I00-I99 IX	Diseases of the circulatory system	0	2	1	3	5	29	50	62	68	220	0	1	1	2	12	17	22	24	76	155
I00-I09	Acute Rheumatic fever and chronic rheumatic heart diseases	0	2	1	0	0	2	1	1	0	7	0	1	1	0	1	1	1	1	0	6
I10-I15	Hypertensive diseases	0	0	0	1	2	15	16	14	24	72	0	0	0	0	6	15	14	13	29	77
I20-I25	Ischaemic heart diseases	0	0	0	1	2	8	14	20	16	61	0	0	0	0	1	1	3	2	22	29
I26-I52	Other heart diseases	0	0	0	1	1	3	14	21	20	60	0	0	0	1	2	0	4	8	21	36
I60-I69	Cerebrovascular diseases	0	0	0	0	0	5	5	5	15	40	0	0	0	1	1	0	0	0	4	6
	Remainder of diseases of the circulatory system	0	0	0	0	0	1	0	1	3	5	0	0	0	0	1	0	0	0	0	1
J00-J99 X	Diseases of the respiratory system	31	17	8	2	5	3	12	23	23	124	26	5	7	8	10	10	20	18	29	133
J00-J06	Acute respiratory infections	4	6	1	0	0	1	3	3	0	18	7	1	4	4	3	2	2	1	0	24
J10-J11	Influenza	1	2	3	0	2	1	1	0	0	10	0	0	1	1	1	1	1	3	2	10
J12-J18	Pneumonia	3	1	3	2	2	0	4	7	12	34	5	1	1	2	4	3	6	4	12	38
J20-J22	Other acute lower respiratory infections	8	1	0	0	1	0	0	0	1	11	4	1	0	0	0	1	0	1	2	9
J40-J47	Chronic lower respiratory diseases	4	6	1	0	0	1	1	10	5	28	0	2	1	0	0	1	7	8	10	29
	Remainder of diseases of the respiratory system	11	1	0	0	0	0	3	3	5	23	10	0	0	1	2	2	4	1	3	23
K00-K93 XI	Diseases of the digestive system	2	9	6	10	6	3	5	5	15	61	0	2	10	4	3	10	8	0	7	44
K25-K27	Gastric and duodenal ulcer	1	0	0	0	0	0	1	0	1	3	0	1	5	1	2	1	0	0	0	10
K35-K38	Diseases of appendix	0	3	3	4	2	2	0	0	0	14	0	0	0	1	0	0	0	0	1	2
K40-K46	Hernia	0	3	2	1	2	0	1	1	2	12	0	0	0	1	0	0	0	0	0	1
	Remainder of diseases of the digestive system	1	3	1	5	2	1	3	4	12	32	0	1	5	2	1	9	8	0	6	32
L00-L99 XII	Diseases of the skin and subcutaneous tissue	2	2	0	2	5	12	10	9	6	48	0	0	1	2	1	3	6	6	10	29
M00-M99 XIII	Diseases of the musculoskeletal system and connective tissue	0	1	3	1	2	7	5	8	4	31	0	0	0	1	0	0	2	2	3	8
N00-N99 XIV	Diseases of the genitourinary system	0	1	0	1	3	4	6	6	4	25	0	0	7	11	6	7	4	6	4	45
N00-N16	Glomerular & renal tubulo-interstitial diseases	0	1	0	0	0	0	0	1	0	2	0	0	1	2	1	0	0	0	0	4
	Remainder of diseases of the genitourinary system	0	0	0	1	3	4	6	5	4	23	0	0	6	9	5	7	4	6	4	41
O00-O99 XV	Pregnancy, childbirth and the puerperium	5	0	99	127	70	8	0	0	0	309	5	0	12	7	2	0	0	0	0	28
O00-O08	Pregnancy with abortive outcome	0	0	12	7	2	0	0	0	0	20	0	0	0	1	5	0	0	0	0	6
O10-O16	Oedema, proteinuria & hypertensive disorders in pregnancy, childbirth and the puerperium	0	0	0	1	5	0	0	0	0	6	0	0	4	11	8	0	0	0	0	23
O20-O29	Other maternal disorders predominantly related to pregnancy	0	0	0	0	0	0	0	0	0	0	0	0	4	2	2	1	0	0	0	9
O30-O48	Maternal care related to the fetus & amniotic cavity and possible delivery problems	0	0	0	0	0	0	0	0	0	0	0	0	0	0	0	0	0	0	0	0
O60-O75	Complications of labour and delivery	0	0	14	7	5	2	0	0	0	28	5	0	65	99	43	3	0	0	0	215
O80-O84	Delivery	5	0	65	99	43	3	0	0	0	215	0	0	0	0	0	1	0	0	0	1
P00-P96 XVI	Certain conditions originating in the perinatal period	2	0	0	0	0	0	0	0	0	2	0	0	0	0	0	1	0	0	0	1
Q00-Q99 XVII	Congenital malformations, deformations and chromosomal abnormalities	0	0	0	0	0	0	0	0	0	0	1	0	0	0	0	0	0	0	0	1
R00-R99 XVIII	Symptoms, signs and abnormal clinical and laboratory findings, nec	3	2	4	3	1	6	3	3	7	32	3	2	8	1	3	7	5	5	8	42
S00-T98 XIX	Injury, poisoning & certain other consequences of external causes	3	15	21	18	15	21	6	7	4	110	2	8	19	7	3	6	7	6	3	61
S00-S09	Injuries to the head	0	1	8	5	0	3	0	1	2	20	0	1	6	2	2	0	1	1	0	13
S10-S29	Injuries to the neck and the thorax	0	1	1	0	0	0	1	0	0	3	1	0	1	0	0	0	0	0	0	2
S30-S39	Injuries to the abdomen, lower back, lumbar spine and pelvis	1	0	0	0	0	0	0	0	0	1	0	1	1	0	0	0	0	0	0	2
S40-S69	Injuries to the shoulder, upper arm, elbow, forearm, wrist & hand	1	6	2	9	6	4	3	2	0	33	0	3	4	1	0	2	1	0	0	11
S70-S99	Injuries to the hip, thigh, knee, lower leg, ankle and foot	0	4	7	1	8	7	2	2	2	33	0	1	6	3	1	1	2	4	3	21

Table 2.16: Prevalence and Incidence of NCD Cases by Year

COOK ISLANDS

Year	Resident Population Estimate	Cardiovascular diseases	Diabetes	Cancer	chronic respiratory diseases
2009	13,300	1,402	658	145	590
2010	11,900	1,571	740	171	640
2011	14,700	1,730	831	200	709
2012	14,300	1,944	927	223	767
2013	14,100	2,140	1,030	239	815
2014	13,600	2,310	1,117	258	879
2015	13,100	2,475	1,212	276	915
Incidence					
2009		229	134	35	88
2010		188	91	28	58
2011		168	95	34	73
2012		230	99	23	62
2013		204	103	24	50
2014		179	89	27	69
2015		185	99	27	41
Incidence percentage of increase					
2009		1.7	1.0	0.3	0.7
2010		1.6	0.8	0.2	0.5
2011		1.1	0.6	0.2	0.5
2012		1.6	0.7	0.2	0.4
2013		1.4	0.7	0.2	0.4
2014		1.3	0.7	0.2	0.5
2015		1.4	0.8	0.2	0.3

Note: (1) Source of population data is the Statistics Office (MFEM) - June quarter

(2) Cardiovascular diseases includes hypertension, stroke, renal failure, heart failure, heart diseases, myocardial infarction

(3) Chronic respiratory diseases includes chronic bronchitis, asthma, emphysema, bronchiectasis

Table 2.17: Cancer Cases by Site, Sex and Age Groupings

COOK ISLANDS 2015

ICD 10 CODE	SITE	MALE								Total	% Distribution
		0-14	15-24	25-34	35-44	45-54	55-64	65-74	75+		
C00 - D48	ALL SITES	0	0	0	2	2	2	3	3	12	100.0
C15	Malignant neoplasm of oesophagus				0	0	0	1	0	1	8.3
C16	Malignant neoplasm of stomach				1	0	0	0	0	1	8.3
C18-C21	Malignant neoplasm of colon, rectum and anus				0	1	0	0	1	2	16.7
C25	Malignant neoplasm of pancreas				0	0	1	0	0	1	8.3
C61	Malignant neoplasms of prostate				0	0	1	1	2	4	33.3
C60, C62-C63	Other malignant neoplasms of male genital organs				0	1	0	0	0	1	8.3
C76-C80	Malignant neoplasm of ill-defined, secondary & unspecified sites				1	0	0	0	0	1	8.3
C97	Malignant neoplasms of independent (primary) multiple sites				0	0	0	1	0	1	8.3
		FEMALE									
C00 - D48	ALL SITES	0	0	0	0	3	7	5	0	15	100.0
C22	Malignant neoplasm of liver & intrahepatic bile ducts					0	1	0	0	1	6.7
C33-C34	Malignant neoplasm of trachea, bronchus and lung					0	1	0	0	1	6.7
C50	Malignant neoplasm of breast					1	2	1	0	4	26.7
C54-C55	Malignant neoplasms of other and unspecified parts of uterus					1	2	2	0	5	33.3
C56	Malignant neoplasms of ovary					1	0	0	0	1	6.7
C51-C52, C57-C58	Other malignant neoplasms of female genital organs					0	1	0	0	1	6.7
C90	Multiple myeloma and malignant plasma cell neoplasms					0	0	1	0	1	6.7
C91-C95	Leukaemia					0	0	1	0	1	6.7

**Table 2.18: Cancer Cases by Site, Sex and Age Groupings
COOK ISLANDS 2014**

ICD 10 CODE	SITE	MALE								Total	% Distribution
		0-14	15-24	25-34	35-44	45-54	55-64	65-74	75+		
C00 - D48	ALL SITES	0	0	0	0	4	1	3	12	20	100.0
C22	Malignant neoplasm of liver & intrahepatic bile ducts					2	0	0	0	2	10.0
C25	Malignant neoplasm of pancreas					0	0	0	1	1	5.0
C17, C23-C24, C26	Other malignant neoplasms of digestive organs					0	0	1	0	1	5.0
C33-C34	Malignant neoplasm of trachea, bronchus and lung					1	1	0	1	3	15.0
C61	Malignant neoplasms of prostate					0	0	2	8	10	50.0
C67	Malignant neoplasms of bladder					0	0	0	1	1	5.0
C82-C85	Non-hodgkin's lymphoma					1	0	0	1	2	10.0
FEMALE											
C00 - D48	ALL SITES	0	0	0	2	0	2	2	1	7	100.0
C18-C21	Malignant neoplasm of colon, rectum and anus				0	0	0	0	1	1	14.3
C22	Malignant neoplasm of liver & intrahepatic bile ducts				0	0	0	1	0	1	14.3
C50	Malignant neoplasm of breast				2	0	0	1	0	3	42.9
C56	Malignant neoplasms of ovary				0	0	1	0	0	1	14.3
C97	Malignant neoplasms of independent (primary) multiple sites				0	0	1	0	0	1	14.3

**Table 2.19: Cancer Cases by Site, Sex and Age Groupings
COOK ISLANDS 2013**

ICD 10 CODE	SITE	MALE								Total	% Distribution
		0-14	15-24	25-34	35-44	45-54	55-64	65-74	75+		
C00 - D48	ALL SITES	0	0	0	0	0	6	3	5	14	100.0
C15	Malignant neoplasm of oesophagus						0	0	1	1	7.1
C22	Malignant neoplasm of liver & intrahepatic bile ducts						2	0	1	3	21.4
C25	Malignant neoplasm of pancreas						1	0	0	1	7.1
C33-C34	Malignant neoplasm of trachea, bronchus and lung						2	1	1	4	28.6
C43	Malignant melanoma of skin						1	0	0	1	7.1
C61	Malignant neoplasms of prostate						0	2	2	4	28.6
FEMALE											
C00 - D48	ALL SITES	0	0	1	2	3	1	3	0	10	100.0
C50	Malignant neoplasm of breast			1	1	2	0	2	0	6	60.0
C54-C55	Malignant neoplasms of other and unspecified parts of uterus			0	0	1	0	1	0	2	20.0
C73-C75	Malignant neoplasms of thyroid and other endocrine glands			0	1	0	0	0	0	1	10.0
C90	Multiple myeloma and malignant plasma cell neoplasms			0	0	0	1	0	0	1	10.0

**Table 2.20: Cancer Cases by Site, Sex and Age Groupings
COOK ISLANDS 2012**

ICD 10 CODE	SITE	MALE								Total	% Distribution
		0-14	15-24	25-34	35-44	45-54	55-64	65-74	75+		
C00 - D48	ALL SITES	0	0	0	0	2	3	4	4	13	100.0
C00-C14	Malignant neoplasms of lip, oral cavity and pharynx					0	1	0	0	1	7.7
C22	Malignant neoplasm of liver & intrahepatic bile ducts					1	0	2	0	3	23.1
C33-C34	Malignant neoplasm of trachea, bronchus and lung					1	1	0	1	3	23.1
C61	Malignant neoplasms of prostate					0	1	1	2	4	30.8
C64-C66, C68	Other malignant neoplasms of urinary tract					0	0	1	1	2	15.4
FEMALE											
C00 - D48	ALL SITES	0	0	0	2	1	2	2	3	10	100.0
C22	Malignant neoplasm of liver & intrahepatic bile ducts				0	0	1	0	1	2	20.0
C33-C34	Malignant neoplasm of trachea, bronchus and lung				0	0	1	0	0	1	10.0
C50	Malignant neoplasm of breast				1	1	0	0	0	2	20.0
C53	Malignant neoplasm of cervix uteri				0	0	0	0	1	1	10.0
C54-C55	Malignant neoplasms of other and unspecified parts of uterus				1	0	0	1	1	3	30.0
C73-C75	Malignant neoplasms of thyroid and other endocrine glands				0	0	0	1	0	1	10.0

Table 2.21: Admissions due to Transport Accidents**RAROTONGA: 2007-2015**

Type of Accident	2007	2008	2009	2010	2011	2012	2013	2014	2015
Transport Accidents	86	50	52	46	60	58	61	60	41
Alcohol Related Accidents	42	32	30	26	32	27	22	17	16
Percentage Alcohol Related	48.8	64.0	57.7	56.5	53.3	46.6	36.1	28.3	39.0
Alcohol Related Deaths	3	4	2	2	4	2	4	2	3
Non Alcohol Related Deaths	2	0	0	0	0	2	2	0	2

**Table 2.22: Admissions due to alcohol related transport accidents
by age groupings and year****RAROTONGA: 2007- 2015**

Age Group	2007	2008	2009	2010	2011	2012	2013	2014	2015
0 - 14	1	1	0	2	0	7	0	0	0
15 - 24	21	19	15	12	16	6	9	9	7
25 - 34	12	5	7	5	7	5	9	2	6
35 - 44	5	3	6	5	4	9	0	1	2
45 - 54	2	3	1	1	3	0	2	3	1
55 +	1	1	1	1	2	0	2	2	0
Total	42	32	30	26	32	27	22	17	16

Table 2.23: Mortality by region & island, year and sex**COOK ISLANDS: 2012 - 2015**

REGION & ISLAND	2012			2013			2014			2015		
	Both Sexes	Male	Female	Both Sexes	Male	Female	Both Sexes	Male	Female	Both Sexes	Male	Female
COOK ISLANDS	113	69	44	112	68	44	131	88	43	118	59	59
RAROTONGA	84	53	31	81	50	31	93	65	28	71	34	37
SOUTHERN GROUP excluding Rarotonga	26	15	11	27	15	12	35	22	13	40	21	19
Aitutaki	10	7	3	10	4	6	12	8	4	15	5	10
Mangaia	9	5	4	8	4	4	6	4	2	8	5	3
Ai'u	2	1	1	3	3	0	11	6	5	7	5	2
Mauke	3	1	2	4	3	1	5	3	2	7	5	2
Mitiaro	2	1	1	2	1	1	1	1	0	3	1	2
NORTHERN GROUP	3	1	2	4	3	1	3	1	2	7	4	3
Palmerston	0	0	0	1	1	0	0	0	0	0	0	0
Pukapuka/Nassau	2	0	2	1	1	0	1	0	1	2	2	0
Manihiki	1	1	0	1	0	1	1	0	1	1	0	1
Rakahanga	0	0	0	1	1	0	0	0	0	0	0	0
Penrhyn	0	0	0	0	0	0	1	1	0	4	2	2

Note: 1. Excludes all Tourists dying in the Cook Islands.

Table 2.24: Selected common cause of death and rate by year

COOK ISLANDS: 2012 - 2015

Cause of Death	2012		2013		2014		2015	
	Number of death	Rate per 100,000	Number of death	Rate per 100,000	Number of death	Rate per 100,000	Number of death	Rate per 100,000
Diseases of the Circulatory System	43	300.7	46	328.6	48	355.6	56	414.8
Hypertension	5	35.0	14	100.0	18	133.3	15	111.1
Ischaemic heart disease	8	55.9	13	92.9	11	81.5	14	103.7
Cerebrovascular Disease	13	90.9	7	50.0	6	44.4	9	66.7
Heart Failure	7	49.0	7	50.0	3	22.2	9	66.7
Other	10	69.9	5	35.7	10	74.1	9	66.7
Neoplasms	26	181.8	16	114.3	16	118.5	16	118.5
Liver and intrahepatic bile ducts	3	21.0	1	7.1	2	14.8	1	7.4
Trachea, Bronchus & Lungs	4	28.0	4	28.6	3	22.2	1	7.4
Prostate	5	35.0	1	7.1	5	37.0	4	29.6
Female Breast	2	14.0	4	28.6	2	14.8	1	7.4
Other	12	83.9	6	42.9	4	29.6	9	66.7
Diseases of the Respiratory System	12	83.9	10	71.4	8	59.3	10	74.1
Pneumonia	9	62.9	7	50.0	6	44.4	5	37.0
Bronchitis, Emphysema & Asthma	2	14.0	1	7.1	2	14.8	4	29.6
Other	1	7.0	2	14.3	0	0.0	1	7.4
Endocrine, Nutritional & Metabolic Diseases & Immunity Disorders	13	90.9	20	142.9	34	251.9	23	170.4
Diabetes Mellitus	13	90.9	19	135.7	32	237.0	23	170.4
Other	0	0.0	1	7.1	2	14.8	0	0.0
Symptoms, Signs & Ill-Defined Conditions	6	42.0	4	28.6	3	22.2	1	7.4
Certain Infectious and Parasitic Diseases	2	14.0	2	14.3	3	22.2	2	14.8
Septicaemia	2	14.0	1	7.1	3	22.2	2	14.8
Other	0	0.0	1	7.1	0	0.0	0	0.0
Injury, poisoning and certain other consequences of external causes	8	55.9	9	64.3	9	66.7	7	51.9
Injuries to the head	4	28.0	8	57.1	6	44.4	7	51.9
Other	4	28.0	1	7.1	3	22.2	0	0.0
Mental and behavioural disorders due to use of alcohol	0	0.0	0	0.0	0	0.0	0	0.0
Diseases of the Nervous System	0	0.0	0	0.0	2	14.8	0	0.0
Diseases of the Digestive System	0	0.0	3	21.4	7	51.9	0	0.0
Ulcer of Stomach and Duodenum	0	0.0	0	0.0	2	14.8	0	0.0
Chronic Liver disease and Cirrhosis	0	0.0	0	0.0	4	29.6	0	0.0
Other	0	0.0	3	21.4	1	7.4	0	0.0
Certain Conditions Originating in the Perinatal Period	2	14.0	0	0.0	0	0.0	1	7.4
Congenital malformations, deformations & chromosomal abnormalities	0	0.0	0	0.0	0	0.0	0	0.0
Diseases of the Genitourinary System	1	7.0	1	7.1	1	7.4	2	14.8
EXTERNAL CAUSES OF INJURY AND POISONING	8	55.9	9	64.3	9	66.7	7	51.9
Transport accidents	5	35.0	6	42.9	6	44.4	5	37.0
Intentional self-harm	2	14.0	1	7.1	1	7.4	1	7.4
Other	1	7.0	2	14.3	2	14.8	1	7.4

Note: Rates are calculated per 100,000 resident population.

Source for population data is Statistics Cook Islands Quarterly Statistical Bulletin

**Table 2.25: Mortality by cause, age groupings and sex
COOK ISLANDS 2015**

ICD 10 Tab Code	Underlying Cause of Death	All Age		< 1		1-4		5-14		15-24		25-34		35-44		45-54		55-64		65-74		75-84		85 +		
		M	F	M	F	M	F	M	F	M	F	M	F	M	F	M	F	M	F	M	F	M	F	M	F	
ALL CAUSES		59	59	0	1	0	0	0	0	3	1	0	1	3	2	7	4	9	5	12	9	19	23	6	13	
A00-B99	Certain infectious and parasitic diseases	1	1	0	0	0	0	0	0	0	0	0	0	0	0	0	0	0	1	1	0	0	0	0	0	0
A40-A41	Septicaemia	1	1	0	0	0	0	0	0	0	0	0	0	0	0	0	0	0	1	1	0	0	0	0	0	0
C00-D48	Neoplasms	12	4	0	0	0	0	0	0	0	0	0	0	1	0	1	0	0	1	3	1	5	2	2	0	0
C15	Malignant neoplasm of oesophagus	2	0	0	0	0	0	0	0	0	0	0	0	0	0	0	0	0	0	0	1	0	0	0	1	0
C16	Malignant neoplasm of stomach	1	0	0	0	0	0	0	0	0	0	0	0	1	0	0	0	0	0	0	0	0	0	0	0	0
C18-C21	Malignant neoplasm of colon, rectum and anus	0	1	0	0	0	0	0	0	0	0	0	0	0	0	0	0	0	0	0	0	0	0	1	0	0
C22	Malignant neoplasm of liver and intrahepatic bile ducts	1	0	0	0	0	0	0	0	0	0	0	0	0	0	1	0	0	0	0	0	0	0	0	0	0
C33-C34	Malignant neoplasm of trachea, bronchus and lung	1	0	0	0	0	0	0	0	0	0	0	0	0	0	0	0	0	0	0	0	0	1	0	0	0
C50	Malignant neoplasm of breast	0	1	0	0	0	0	0	0	0	0	0	0	0	0	0	0	0	1	0	0	0	0	0	0	0
C61	Malignant neoplasm of prostate	4	0	0	0	0	0	0	0	0	0	0	0	0	0	0	0	0	0	0	1	0	3	0	0	0
C67	Malignant neoplasm of bladder	1	1	0	0	0	0	0	0	0	0	0	0	0	0	0	0	0	0	0	0	0	0	1	1	0
	Other	2	1	0	0	0	0	0	0	0	0	0	0	0	0	0	0	0	0	1	1	1	0	0	0	0
E00-E88	Endocrine, nutritional and metabolic diseases	10	13	0	0	0	0	0	0	0	0	0	0	0	0	4	2	1	0	1	2	3	7	1	2	2
E10-E14	Diabetes Mellitus	10	13	0	0	0	0	0	0	0	0	0	0	0	0	4	2	1	0	1	2	3	7	1	2	2
I00-I99	Diseases of the circulatory system	29	27	0	0	0	0	0	0	0	0	0	0	1	0	2	0	8	3	6	5	9	11	3	8	3
I10-I13	Hypertension Disease	6	9	0	0	0	0	0	0	0	0	0	0	0	0	0	0	1	1	2	3	2	2	1	3	3
I20-I25	Ischaemic heart diseases	7	7	0	0	0	0	0	0	0	0	0	0	1	0	1	0	2	1	2	1	1	3	0	2	2
I50	Heart failure	6	3	0	0	0	0	0	0	0	0	0	0	0	0	0	0	2	0	0	0	4	3	0	0	0
I60-I69	Cerebrovascular Disease	5	4	0	0	0	0	0	0	0	0	0	0	0	0	0	0	3	0	1	0	1	1	0	3	3
	Other	5	4	0	0	0	0	0	0	0	0	0	0	0	0	1	0	0	1	1	1	1	2	2	0	0
J00-J98	Diseases of the respiratory system	3	7	0	0	0	0	0	0	0	0	0	0	0	1	0	1	0	0	1	0	2	3	0	2	2
J12-J18	Pneumonia	3	2	0	0	0	0	0	0	0	0	0	0	0	0	0	0	0	0	1	0	2	1	0	1	2
	Other	0	5	0	0	0	0	0	0	0	0	0	0	0	1	0	1	0	0	0	0	0	2	0	1	2
N00-N98	Diseases of the genitourinary system	0	2	0	0	0	0	0	0	0	0	0	0	0	0	0	1	0	0	0	1	0	0	0	0	0
P00-P96	Certain conditions originating in the perinatal period	0	1	0	1	0	0	0	0	0	0	0	0	0	0	0	0	0	0	0	0	0	0	0	0	0
R00-R99	Symptoms, signs & abnormal clinical & laboratory findings, n.e.c.	0	1	0	0	0	0	0	0	0	0	0	0	0	0	0	0	0	0	0	0	0	0	0	0	1
S00-T98	Injury, poisoning and certain other consequences of external causes	4	3	0	0	0	0	0	0	3	1	0	1	1	1	0	0	0	0	0	0	0	0	0	0	0
S00-S09	Injuries to the head	4	3	0	0	0	0	0	0	3	1	0	1	1	1	0	0	0	0	0	0	0	0	0	0	0
V01-Y98	External causes of mortality	4	3	0	0	0	0	0	0	3	1	0	1	1	1	0	0	0	0	0	0	0	0	0	0	0
V01-V99	Transport accidents	2	3	0	0	0	0	0	0	2	1	0	1	0	1	0	0	0	0	0	0	0	0	0	0	0
W65-W74	Accidental drowning and submersion	1	0	0	0	0	0	0	0	0	0	0	0	1	0	0	0	0	0	0	0	0	0	0	0	0
X60-X84	Intentional self-harm	1	0	0	0	0	0	0	0	1	0	0	0	0	0	0	0	0	0	0	0	0	0	0	0	0

**Table 2.26: Mortality by cause, age groupings and sex
COOK ISLANDS 2014**

ICD 10 Tab Code	Underlying Cause of Death	All Age		< 1		1-4		5-14		15-24		25-34		35-44		45-54		55-64		65-74		75-84		85 +	
		M	F	M	F	M	F	M	F	M	F	M	F	M	F	M	F	M	F	M	F	M	F	M	F
ALL CAUSES		88	43	0	0	0	0	0	0	4	0	4	0	5	3	8	2	14	4	20	13	27	18	6	3
A00-B99	Certain infectious and parasitic diseases	3	0	0	0	0	0	0	0	0	0	0	0	1	0	0	0	0	0	0	0	2	0	0	0
A40-A41	Septicaemia	3	0	0	0	0	0	0	0	0	0	0	0	1	0	0	0	0	0	0	0	2	0	0	0
C00-D48	Neoplasms	12	4	0	0	0	0	0	0	0	0	0	0	0	1	3	1	2	1	1	0	4	1	2	0
C18-C21	Malignant neoplasm of colon, rectum and anus	0	1	0	0	0	0	0	0	0	0	0	0	0	0	0	0	0	0	0	0	0	1	0	0
C22	Malignant neoplasm of liver and intrahepatic bile ducts	2	0	0	0	0	0	0	0	0	0	0	0	0	0	1	0	0	0	1	0	0	0	0	0
C25	Malignant neoplasm of pancreas	2	0	0	0	0	0	0	0	0	0	0	0	0	0	0	0	1	0	0	0	1	0	0	0
C33-C34	Malignant neoplasm of trachea, bronchus and lung	3	0	0	0	0	0	0	0	0	0	0	0	0	0	2	0	1	0	0	0	0	0	0	0
C50	Malignant neoplasm of breast	0	2	0	0	0	0	0	0	0	0	0	0	0	1	0	1	0	0	0	0	0	0	0	0
C61	Malignant neoplasm of prostate	5	0	0	0	0	0	0	0	0	0	0	0	0	0	0	0	0	0	0	0	3	0	2	0
	Other	0	1	0	0	0	0	0	0	0	0	0	0	0	0	0	0	0	1	0	0	0	0	0	0
E00-E88	Endocrine, nutritional and metabolic diseases	18	16	0	0	0	0	0	0	0	0	0	0	0	1	2	0	2	1	6	8	8	6	0	0
E10-E14	Diabetes Mellitus	17	15	0	0	0	0	0	0	0	0	0	0	0	1	2	0	2	1	5	7	8	6	0	0
	Other	1	1	0	0	0	0	0	0	0	0	0	0	0	0	0	0	0	0	1	1	0	0	0	0
G00-G98	Diseases of the nervous system	1	1	0	0	0	0	0	0	0	0	1	0	0	0	0	0	0	1	0	0	0	0	0	0
I00-I99	Diseases of the circulatory system	29	19	0	0	0	0	0	0	0	0	0	0	1	1	2	0	5	1	10	4	8	10	3	3
I10-I13	Hypertension Disease	7	11	0	0	0	0	0	0	0	0	0	0	0	0	1	0	1	1	2	1	2	7	1	2
I20-I25	Ischaemic heart diseases	9	2	0	0	0	0	0	0	0	0	0	0	1	0	0	0	1	0	3	1	3	0	1	1
I50	Heart failure	3	0	0	0	0	0	0	0	0	0	0	0	0	0	0	0	1	0	1	0	0	0	1	0
I60-I69	Cerebrovascular Disease	2	4	0	0	0	0	0	0	0	0	0	0	0	0	0	0	1	0	0	1	1	3	0	0
	Other	8	2	0	0	0	0	0	0	0	0	0	0	0	1	1	0	1	0	4	1	2	0	0	0
J00-J98	Diseases of the respiratory system	6	2	0	0	0	0	0	0	0	0	1	0	0	0	1	1	0	0	3	1	1	0	0	0
J12-J18	Pneumonia	6	0	0	0	0	0	0	0	0	0	1	0	0	0	1	0	0	0	3	0	1	0	0	0
	Other	0	2	0	0	0	0	0	0	0	0	0	0	0	0	0	1	0	0	0	1	0	0	0	0
K00-K93	Diseases of the digestive system	7	0	0	0	0	0	0	0	0	0	0	0	0	0	0	0	5	0	0	0	2	0	0	0
N00-N98	Diseases of the genitourinary system	1	0	0	0	0	0	0	0	0	0	0	0	0	0	0	0	0	0	0	0	0	0	1	0
R00-R99	Symptoms, signs & abnormal clinical & laboratory findings, n.e.c.	2	1	0	0	0	0	0	0	0	0	1	0	0	0	0	0	0	0	0	0	1	1	0	0
S00-T98	Injury, poisoning and certain other consequences of external causes	9	0	0	0	0	0	0	0	4	0	1	0	3	0	0	0	0	0	0	0	1	0	0	0
S00-S09	Injuries to the head	6	0	0	0	0	0	0	0	3	0	1	0	1	0	0	0	0	0	0	0	1	0	0	0
	Other	3	0	0	0	0	0	0	0	1	0	0	0	2	0	0	0	0	0	0	0	0	0	0	0
V01-Y98	External causes of mortality	9	0	0	0	0	0	0	0	4	0	1	0	3	0	0	0	0	0	0	0	1	0	0	0
V01-V99	Transport accidents	6	0	0	0	0	0	0	0	3	0	1	0	2	0	0	0	0	0	0	0	0	0	0	0
W00-W19	Falls	1	0	0	0	0	0	0	0	0	0	0	0	0	0	0	0	0	0	0	0	1	0	0	0
W65-W74	Accidental drowning and submersion	1	0	0	0	0	0	0	0	0	0	0	0	1	0	0	0	0	0	0	0	0	0	0	0
X60-X84	Intentional self-harm	1	0	0	0	0	0	0	0	1	0	0	0	0	0	0	0	0	0	0	0	0	0	0	0

**Table 2.27: Mortality by cause, age groupings and sex
COOK ISLANDS 2013**

ICD 10 Tab Code	Underlying Cause of Death	All Age		< 1		1-4		5-14		15-24		25-34		35-44		45-54		55-64		65-74		75-84		85 +		
		M	F	M	F	M	F	M	F	M	F	M	F	M	F	M	F	M	F	M	F	M	F	M	F	
ALL CAUSES		68	44	0	0	0	0	1	0	7	1	1	1	2	0	7	3	16	11	15	8	17	10	2	10	
A00-B99	Certain infectious and parasitic diseases	1	1	0	0	0	0	0	0	0	0	0	1	0	0	0	0	0	0	0	1	0	0	0	0	0
A40-A41	Septicaemia	1	0	0	0	0	0	0	0	0	0	0	0	0	0	0	0	0	0	0	1	0	0	0	0	0
	Other	0	1	0	0	0	0	0	0	0	0	0	1	0	0	0	0	0	0	0	0	0	0	0	0	0
C00-D48	Neoplasms	8	8	0	0	0	0	0	0	0	0	0	0	0	0	0	1	0	4	3	1	5	1	0	1	
C22	Malignant neoplasm of liver and intrahepatic bile ducts	1	0	0	0	0	0	0	0	0	0	0	0	0	0	0	0	0	0	0	1	0	0	0	0	0
C25	Malignant neoplasm of pancreas	1	0	0	0	0	0	0	0	0	0	0	0	0	0	0	0	0	0	0	0	0	1	0	0	0
C34	Malignant neoplasm of bronchus and lung	2	2	0	0	0	0	0	0	0	0	0	0	0	0	0	0	0	1	1	1	1	1	0	0	0
C50	Malignant neoplasm of breast	0	4	0	0	0	0	0	0	0	0	0	0	0	0	0	1	0	2	0	0	0	0	0	0	1
C61	Malignant neoplasm of prostate	1	0	0	0	0	0	0	0	0	0	0	0	0	0	0	0	0	0	0	0	0	1	0	0	0
	Other	3	2	0	0	0	0	0	0	0	0	0	0	0	0	0	0	0	1	1	0	2	1	0	0	0
D50-D89	Diseases of the blood and bloodforming organs	1	0	0	0	0	0	0	0	0	0	0	0	0	0	0	0	0	0	0	1	0	0	0	0	0
E00-E88	Endocrine, nutritional and metabolic diseases	11	9	0	0	0	0	0	0	1	0	0	0	0	0	1	0	3	3	4	2	2	1	0	3	3
E10-E14	Diabetes Mellitus	11	8	0	0	0	0	0	0	1	0	0	0	0	0	1	0	3	3	4	1	2	1	0	3	3
	Other	0	1	0	0	0	0	0	0	0	0	0	0	0	0	0	0	0	0	0	1	0	0	0	0	0
I00-I99	Diseases of the circulatory system	31	15	0	0	0	0	0	0	1	0	0	0	1	0	5	0	11	3	5	3	7	6	1	3	3
I10-I13	Hypertension Disease	12	2	0	0	0	0	0	0	0	0	0	0	0	0	1	0	5	1	2	0	3	1	1	0	0
I20-I25	Ischaemic heart diseases	10	3	0	0	0	0	0	0	0	0	0	0	1	0	3	0	3	1	2	1	1	1	1	0	0
I50	Heart failure	1	6	0	0	0	0	0	0	1	0	0	0	0	0	0	0	0	1	0	1	0	3	0	1	0
I60-I69	Cerebrovascular Disease	4	3	0	0	0	0	0	0	0	0	0	0	0	0	0	0	2	0	1	0	1	1	0	2	0
	Other	4	1	0	0	0	0	0	0	0	0	0	0	0	0	1	0	1	0	0	1	2	0	0	0	0
J00-J98	Diseases of the respiratory system	4	6	0	0	0	0	1	0	0	0	0	0	0	0	0	2	2	1	1	0	0	1	0	2	0
J12-J18	Pneumonia	3	4	0	0	0	0	1	0	0	0	0	0	0	0	0	2	1	1	1	0	0	0	0	1	0
	Other	1	2	0	0	0	0	0	0	0	0	0	0	0	0	0	0	1	0	0	0	0	1	0	1	0
K00-K93	Diseases of the digestive system	1	2	0	0	0	0	0	0	0	0	0	0	0	0	0	0	0	0	0	1	1	1	0	0	0
N00-N98	Diseases of the genitourinary system	0	1	0	0	0	0	0	0	0	0	0	0	0	0	0	0	0	0	0	0	0	0	0	0	1
R00-R99	Symptoms, signs & abnormal clinical & laboratory findings, n.e.c.	3	1	0	0	0	0	0	0	0	0	0	0	0	0	0	0	0	0	0	1	2	0	1	0	0
S00-T98	Injury, poisoning and certain other consequences of external causes	8	1	0	0	0	0	0	0	5	1	1	0	1	0	1	0	0	0	0	0	0	0	0	0	0
S00-S09	Injuries to the head	7	1	0	0	0	0	0	0	5	1	1	0	1	0	1	0	0	0	0	0	0	0	0	0	0
	Other	1	0	0	0	0	0	0	0	0	0	0	0	0	0	1	0	0	0	0	0	0	0	0	0	0
V01-Y98	External causes of mortality	8	1	0	0	0	0	0	0	5	1	1	0	1	0	1	0	0	0	0	0	0	0	0	0	0
V01-V99	Transport accidents	5	1	0	0	0	0	0	0	5	1	0	0	0	0	0	0	0	0	0	0	0	0	0	0	0
W00-W19	Falls	1	0	0	0	0	0	0	0	0	0	0	0	1	0	0	0	0	0	0	0	0	0	0	0	0
X60-X84	Intentional self-harm	1	0	0	0	0	0	0	0	0	0	1	0	0	0	0	0	0	0	0	0	0	0	0	0	0
T51-T65	Toxic effects of substances chiefly nonmedicinal as to source	1	0	0	0	0	0	0	0	0	0	0	0	0	0	1	0	0	0	0	0	0	0	0	0	0

**Table 2.28: Laboratory positive new cases by disease and year
RAROTONGA, COOK ISLANDS: 2009 - 2015**

	YEAR						
	2009	2010	2011	2012	2013	2014	2015
STD							
Gonorrhoea	56	23	29	8	6	2	1
HIV	0	0	0	0	0	0	0
Syphilis	2	2	2	7	0	0	1
Candida	70	35	30	72	7	4	0
Non Specific Urethritis	22	32	20	55	6	0	0
Trichomonas Vaginalis	13	18	9	15	9	1	0
Chlamydia	161	117	104	89	39	28	30
Hepatitis B	6	23	13	23	5	6	6
OTHERS							
Tuberculosis	0	0	0	1	0	0	0
Typhoid/Paratyphoid	0	0	0	0	0	0	0
Dengue Fever	35	0	0	6	4	5	0
Influenza A	146	2	18	0	0	0	0
Chikungunya							11

**Table 3.1: Number of cases referred overseas and to Rarotonga
COOK ISLANDS: 2000 - 2015**

Period	Overseas	Island										
		TOTAL	Aitutaki	Mangaia	Atiu	Mauke	Mitiaro	Palmerston	Pukapuka			
								/Nassau	Manihiki	Rakahanga		
2000	102	130	59	3	8	21	10	0	8	7	3	11
2001	116	178	48	16	33	29	6	1	10	13	3	19
2002	149	164	50	30	19	15	5	0	14	9	0	22
2003	165	172	53	24	17	23	1	0	12	10	1	31
2004	166	176	49	35	23	28	1	0	20	5	0	15
2005	169	255	85	37	18	43	10	0	29	20	1	12
2006	154	187	64	27	36	9	6	0	26	15	0	4
2007	182	180	53	22	25	39	15	3	12	9	0	2
2008	167	165	57	37	13	5	6	1	21	7	0	18
2009	137	197	61	30	29	22	11	3	21	11	0	9
2010	158	289	98	62	27	17	27	8	22	8	4	16
2011	150	228	70	41	20	18	13	9	17	13	10	17
2012	172	280	132	37	19	16	20	5	18	15	1	17
2013	133	269	95	41	30	22	22	4	24	17	7	7
2014	116	237	102	37	29	22	16	0	5	13	4	9
2015	155	237	99	25	27	29	15	9	11	8	2	12
QUARTER												
2010 Mar	39	62	19	10	4	7	7	3	5	1	1	5
Jun	41	94	38	20	11	5	7	0	4	4	1	4
Sep	44	49	14	9	7	3	3	0	8	0	0	5
Dec	34	84	27	23	5	2	10	5	5	3	2	2
2011 Mar	35	51	12	6	6	5	5	4	2	1	5	5
Jun	25	81	24	19	5	6	5	4	5	6	3	4
Sep	44	56	20	9	5	4	2	1	10	2	1	2
Dec	46	40	14	7	4	3	1	0	0	4	1	6
2012 Mar	44	34	13	5	2	1	3	0	3	4	0	3
Jun	45	133	67	23	11	8	4	3	6	4	1	6
Sep	47	70	24	7	4	5	5	2	9	6	0	8
Dec	36	43	28	2	2	2	8	0	0	1	0	0
2013 Mar	42	44	9	7	5	4	3	1	5	8	0	2
Jun	35	99	33	24	13	7	9	0	7	4	2	0
Sep	21	70	34	1	10	6	6	0	3	3	4	3
Dec	35	56	19	9	2	5	4	3	9	2	1	2
2014 Mar	35	58	20	6	10	4	3	0	2	7	0	6
Jun	26	73	28	15	9	9	4	0	0	4	3	1
Sep	28	53	24	6	6	7	7	0	1	2	0	0
Dec	27	53	30	10	4	2	2	0	2	0	1	2
2015 Mar	42	60	25	5	3	1	6	7	7	3	0	3
Jun	37	103	43	12	16	16	6	1	1	3	1	4
Sep	39	35	15	3	2	11	2	0	1	0	0	1
Dec	37	39	16	5	6	1	1	1	2	2	1	4

**Table 3.2: Patients Admitted and Discharged from Hospital
by Region & Island and Bed Occupancy.
COOK ISLANDS 2015**

REGION & ISLAND	Number of				% Bed Occupancy
	Admissions	Discharges	Bed Days Used	Bed Days Available	
COOK ISLANDS	1,840	1,809	6,786	47,815	14.2
RAROTONGA	1,504	1,487	5,712	25,550	22.4
SOUTHERN GROUP excluding Rarotonga	307	299	901	18,615	4.8
Aitutaki	232	221	716	10,220	7.0
Mangaia	17	18	61	2,190	2.8
Atiu	21	25	83	3,285	2.5
Mauke	29	26	4	2,190	0.2
Mitiaro	8	9	37	730	5.1
NORTHERN GROUP	29	23	173	3,650	4.7
Palmerston	2	2	5	0	0.0
Pukapuka/Nassau	9	8	117	1,460	8.0
Manihiki	13	7	35	730	4.8
Rakahanga	1	1	2	730	0.3
Penrhyn	4	5	14	730	1.9

**Table 3.3: Patients Admitted and Discharged from Hospital
by Region & Island and Bed Occupancy.
COOK ISLANDS 2014**

REGION & ISLAND	Number of				% Bed Occupancy
	Admissions	Discharges	Bed Days Used	Bed Days Available	
COOK ISLANDS	2,182	2,156	8,054	47,815	16.8
RAROTONGA	1,545	1,538	6,637	25,550	26.0
SOUTHERN GROUP excluding Rarotonga	596	575	1,282	18,615	6.9
Aitutaki	472	459	779	10,220	7.6
Mangaia	41	37	220	2,190	10.0
Atiu	40	38	175	3,285	5.3
Mauke	29	29	74	2,190	3.4
Mitiaro	14	12	34	730	4.7
NORTHERN GROUP	41	43	135	3,650	3.7
Palmerston	0	0	0	0	0.0
Pukapuka/Nassau	8	11	27	1,460	1.8
Manihiki	23	20	84	730	11.5
Rakahanga	5	6	13	730	1.8
Penrhyn	5	6	11	730	1.5

**Table 3.4: Patients Admitted and Discharged from Hospital
by Region & Island and Bed Occupancy.
COOK ISLANDS 2013**

REGION & ISLAND	Number of				% Bed Occupancy
	Admissions	Discharges	Bed Days Used	Bed Days Available	
COOK ISLANDS	2,450	2,426	7,468	47,815	15.6
RAROTONGA	1,558	1,564	5,963	25,550	23.3
SOUTHERN GROUP excluding Rarotonga	850	832	1,378	18,615	7.4
Aitutaki	737	722	844	10,220	8.3
Mangaia	37	33	208	2,190	9.5
Atiu	38	39	176	3,285	5.4
Mauke	29	28	87	2,190	4.0
Mitiaro	9	10	63	730	8.6
NORTHERN GROUP	42	30	127	3,650	3.5
Palmerston	1	1	2	0	0.0
Pukapuka/Nassau	11	10	38	1,460	2.6
Manihiki	20	10	42	730	5.8
Rakahanga	5	3	7	730	1.0
Penrhyn	5	6	38	730	5.2

**Table 3.5: Patients Admitted and Discharged from, or Dying in Hospital
by Month and Bed Occupancy.
RAROTONGA 2015**

Month	Number of			Total Discharges & Deaths	Number of Bed Days		Average Occupied Bed	% Bed Occupancy
	Admissions	Discharges	Deaths		Available	Used		
January	108	98	4	102	2,170	504	16.3	23.2
February	118	98	3	101	1,960	592	21.1	30.2
March	122	102	7	109	2,170	581	18.7	26.8
April	188	177	4	181	2,100	638	21.3	30.4
May	118	121	3	124	2,170	625	20.2	28.8
June	112	111	3	114	2,100	267	8.9	12.7
July	129	119	3	122	2,170	532	17.2	24.5
August	142	134	3	137	2,170	655	21.1	30.2
September	135	138	0	138	2,100	604	20.1	28.8
October	93	101	3	104	2,170	420	13.5	19.4
November	115	107	3	110	2,100	577	19.2	27.5
December	124	110	5	115	2,170	641	20.7	29.5
Total	1,504	1,416	41	1,457	25,550	6,636	18.2	26.0

**Table 3.6: Patients Admitted and Discharged from, or Dying in Hospital
by Month and Bed Occupancy.
RAROTONGA 2014**

Month	Number of			Total Discharges & Deaths	Number of Bed Days		Average Occupied Bed	% Bed Occupancy
	Admissions	Discharges	Deaths		Available	Used		
January	116	114	5	119	2,170	428	13.8	19.7
February	120	107	1	108	1,960	425	15.2	21.7
March	120	116	7	123	2,170	566	18.3	26.1
April	76	120	3	123	2,100	919	30.6	43.8
May	191	120	4	124	2,170	463	14.9	21.3
June	137	120	4	124	2,100	500	16.7	23.8
July	150	132	4	136	2,170	482	15.5	22.2
August	128	134	5	139	2,170	577	18.6	26.6
September	141	120	5	125	2,100	791	26.4	37.7
October	122	120	5	125	2,170	488	15.7	22.5
November	122	120	2	122	2,100	524	17.5	25.0
December	122	120	0	120	2,170	374	12.1	17.2
Total	1,545	1,443	45	1,488	25,550	6,537	17.9	25.6

**Table 3.7: Patients Admitted and Discharged from, or Dying in Hospital
by Month and Bed Occupancy.
RAROTONGA 2013**

Month	Number of			Total Discharges & Deaths	Number of Bed Days		Average Occupied Bed	% Bed Occupancy
	Admissions	Discharges	Deaths		Available	Used		
January	116	114	5	119	2,170	454	14.6	20.9
February	120	107	1	108	1,960	517	18.5	26.4
March	120	116	7	123	2,170	367	11.8	16.9
April	139	139	3	142	2,100	515	17.2	24.5
May	153	152	6	158	2,170	556	17.9	25.6
June	113	111	3	114	2,100	430	14.3	20.5
July	144	143	2	145	2,170	448	14.5	20.6
August	127	124	2	126	2,170	538	17.4	24.8
September	142	134	4	138	2,100	586	19.5	27.9
October	124	129	4	133	2,170	484	15.6	22.3
November	118	113	3	116	2,100	545	18.2	26.0
December	142	137	5	142	2,170	523	16.9	24.1
Total	1,558	1,519	45	1,564	25,550	5,963	16.3	23.3

**Table 3.8: Outpatient consultations by year, sex and age groups
COOK ISLANDS 2012-2015**

Year	Total	Age Groups															
		0-4	5-9	10-14	15-19	20-24	25-29	30-34	35-39	40-44	45-49	50-54	55-59	60-64	65-69	70+	Unknown
2012	35,836	4,097	4,279	2,232	2,204	2,291	1,752	1,839	1,661	2,018	2,183	2,338	1,735	1,693	1,727	3,763	24
2013	37,906	5,033	3,573	2,323	2,455	2,202	1,905	1,918	1,675	2,206	2,399	2,658	1,993	1,930	1,806	3,815	15
2014	17,587	1,497	1,842	1,147	1,060	1,080	1,000	963	826	1,018	1,199	1,313	1,110	933	742	1,849	8
2015	31,401	3,571	2,834	1,757	1,790	1,708	1,619	1,599	1,513	1,704	2,161	2,375	2,007	1,815	1,510	3,433	5
Sex: Male																	
2012	18,243	2181	2169	1181	1157	1025	828	812	708	976	1092	1337	882	979	944	1962	10
2013	19,320	2640	1834	1218	1221	1002	829	840	718	1107	1228	1473	1020	1083	982	2116	9
2014	8,923	841	940	601	542	507	494	399	429	430	659	687	572	467	389	962	4
2015	15,770	2,001	1,442	912	882	777	773	603	678	789	1,126	1,254	982	945	812	1,793	1
Sex: Female																	
2012	17,593	1916	2110	1051	1047	1266	924	1027	953	1042	1091	1001	853	714	783	1801	14
2013	18,586	2393	1739	1105	1234	1200	1076	1078	957	1099	1171	1185	973	847	824	1699	6
2014	8,664	656	902	546	518	573	506	564	397	588	540	626	538	466	353	887	4
2015	15,631	1,570	1,392	845	908	931	846	996	835	915	1,035	1,121	1,025	870	698	1,640	4

**Table 3.9: CURRENT USERS - Women on Family Planning Contraceptives by Year
COOK ISLANDS 2010 - 2015**

Contraceptive Type	YEAR					
	2010	2011	2012	2013	2014	2015
All Methods	1,290	1,166	1,150	1,296	1,201	1,040
Prevalence Rate (%)	34.4	31.9	31.5	35.5	32.9	28.5
Oral Contraceptive (Pills)	588	514	436	505	448	428
Intra Uterine Device	12	40	59	14	6	2
Depo Provera (Injections)	576	494	487	677	630	515
Norplant/Jadelle	35	70	86	65	60	58
Others	79	48	82	35	57	37

Annex 2: Life Tables

Life table for Males: 2009-2015

Age group	x	nx	ax	pop (Nx)	death	mx	qx	lx	dx	Lx	Tx	ex
<5	0	5	0.2	748	1	0.0009	0.0047	100000	466	498135	7080564	70.81
5-9	5	5	0.5	723	0	0.0000	0.0000	99534	0	497669	6582429	66.13
10-14	10	5	0.5	749	0	0.0004	0.0020	99534	199	497171	6084759	61.13
15-19	15	5	0.5	686	2	0.0035	0.0173	99335	1723	492367	5587588	56.25
20-24	20	5	0.5	503	1	0.0028	0.0138	97612	1349	484688	5095221	52.20
25-29	25	5	0.5	451	1	0.0029	0.0143	96263	1377	477872	4610533	47.90
30-34	30	5	0.5	394	0	0.0010	0.0051	94886	480	473227	4132661	43.55
35-39	35	5	0.5	448	2	0.0054	0.0264	94405	2495	465788	3659434	38.76
40-44	40	5	0.5	521	1	0.0013	0.0067	91910	615	458011	3193646	34.75
45-49	45	5	0.5	542	4	0.0079	0.0389	91295	3551	447595	2735635	29.96
50-54	50	5	0.5	432	2	0.0044	0.0218	87744	1909	433946	2288040	26.08
55-59	55	5	0.5	342	5	0.0146	0.0705	85835	6053	414042	1854094	21.60
60-64	60	5	0.5	310	5	0.0158	0.0760	79782	6066	383744	1440052	18.05
65-69	65	5	0.5	244	10	0.0410	0.1859	73716	13702	334326	1056308	14.33
70-74	70	5	0.5	204	5	0.0240	0.1133	60014	6799	283073	721982	12.03
75+	75	16	0.5	193	23	0.1212	1.0000	53215	53215	438909	438909	8.25

Life table for Females: 2009-2015

Age group	x	nx	ax	pop (Nx)	death	mx	qx	lx	dx	Lx	Tx	ex
<5	0	5	0.2	733	1	0.0008	0.0041	100000	408	498368	8164059	81.64
5-9	5	5	0.5	720	0	0.0001	0.0007	99592	69	497787	7665691	76.97
10-14	10	5	0.5	659	0	0.0002	0.0008	99523	75	497426	7167903	72.02
15-19	15	5	0.5	597	0	0.0007	0.0033	99447	333	496406	6670477	67.08
20-24	20	5	0.5	512	0	0.0002	0.0010	99115	97	495332	6174072	62.29
25-29	25	5	0.5	493	0	0.0006	0.0030	99018	301	494338	5678739	57.35
30-34	30	5	0.5	462	0	0.0000	0.0000	98717	0	493586	5184401	52.52
35-39	35	5	0.5	521	1	0.0013	0.0067	98717	661	491934	4690815	47.52
40-44	40	5	0.5	542	0	0.0007	0.0037	98056	361	489379	4198881	42.82
45-49	45	5	0.5	528	2	0.0038	0.0188	97695	1833	483894	3709502	37.97
50-54	50	5	0.5	412	1	0.0015	0.0073	95862	695	477572	3225608	33.65
55-59	55	5	0.5	334	2	0.0072	0.0353	95167	3359	467437	2748036	28.88
60-64	60	5	0.5	270	2	0.0070	0.0346	91808	3174	451104	2280599	24.84
65-69	65	5	0.5	246	5	0.0187	0.0893	88633	7917	423375	1829496	20.64
70-74	70	5	0.5	214	2	0.0089	0.0434	80717	3505	394820	1406120	17.42
75+	75	26	0.5	241	18	0.0763	1.0000	77211	77211	1011300	1011300	13.10

Annex 3: Core Indicator Summary

Indicator Definition	2013	2014	2015
1. Total fertility rate (TFR per woman) <i>The average number of children that would be born alive to a woman during their lifetime</i>	2.5	2.2	2.1
2. Number of births <i>The number of live births in a given year by Island</i>	261	223	218
Rarotonga	227	209	203
Aitutaki	22	10	9
Mangaia	3	1	0
Atiu	1	1	1
Mauke	0	0	0
Mitiaro	0	0	0
Palmerston	0	0	0
Pukapuka/Nassau	8	2	5
Manihiki	0	0	0
Rakahanga	0	0	0
Penrhyn	0	0	0
3. Immunization coverage (overall) <i>Percentage of children under 5 years of age who have received at least one dose of the following vaccinations in a given year</i>			
BCG	100	100	100
DTP3	98	99	99
Polio3	98	99	99
Measles/Rubella	97	98	98
Tetanus	98	99	99
4. Crude death rate (CDR per 1,000 population) <i>The number of deaths occurring during a given year per 1,000 population</i>	7.9	9.6	9.0

5. Distribution of top 10 causes of death (%)				
<i>Distribution of main causes of death as percentage of total deaths</i>				
1	Diabetes mellitus	17.0	24.4	19.5
	Male	16.2	19.3	16.9
	Female	18.2	34.9	22.0
2	Other heart diseases	10.7	9.9	15.3
	Male	7.4	12.5	18.6
	Female	15.9	4.7	11.9
3	Hypertension diseases	12.5	13.7	12.7
	Male	17.6	8.0	10.2
	Female	4.5	25.6	15.3
4	Ischaemic heart diseases	11.6	8.4	11.9
	Male	14.7	10.2	11.9
	Female	6.8	4.7	11.9
5	Other malignant neoplasms	13.4	8.4	10.2
	Male	10.3	8.0	13.6
	Female	18.2	9.3	6.8
6	Cerebrovascular diseases	6.3	4.6	7.6
	Male	5.9	2.3	8.5
	Female	6.8	9.3	6.8
7	Pneumonia	6.3	4.6	4.2
	Male	4.4	6.8	5.1
	Female	9.1	0.0	3.4
8	Transport accidents	5.4	4.6	4.2
	Male	7.4	6.8	3.4
	Female	2.3	0.0	5.1
9	Malignant neoplasm of prostate (Male)	0.9	3.8	3.4
10	Chronic lower respiratory diseases	2.7	1.5	3.4
	Male	1.5	0.0	0.0
	Female	4.5	4.7	8.5
6. Infant mortality rate (IMR per 1,000 live births)		0.0	0.0	4.8
<i>A probability of death derived from a life table and expressed as rate per 1000 live births</i>				
7. Life expectancy at birth				
<i>The average number of years that a newborn could expect to live, if they experienced mortality conditions prevailing at the time</i>				
	Male	71.7	71.8	70.8
	Female	79.6	82.0	81.6

8. Distribution of top 10 causes of morbidity (%)				
<i>The percentage distribution of the main causes of morbidity in a given year</i>				
1	Heart diseases	11.9	12.3	15.1
	Male	21.7	23.0	23.1
	Female	13.9	14.6	17.0
2	Other diseases of the respiratory system	10.8	6.6	12.0
	Male	14.6	18.0	15.7
	Female	18.8	17.4	16.5
3	Injury, poisoning & certain other consequences of external causes	9.2	13.4	8.5
	Male	16.7	10.3	11.6
	Female	11.0	11.6	11.3
4	Hypertensive diseases	8.0	7.6	8.1
	Male	10.9	9.6	9.7
	Female	13.9	9.9	12.0
5	Certain infectious and parasitic diseases	4.1	4.9	7.3
	Male	9.3	8.8	10.0
	Female	7.9	10.2	9.4
6	Diseases of the digestive system	5.7	6.8	5.8
	Male	7.1	8.7	8.2
	Female	7.4	8.6	7.1
7	Diabetes mellitus	4.7	6.0	5.5
	Male	7.3	6.9	7.1
	Female	5.2	7.2	7.5
8	Diseases of the skin and subcutaneous tissue	4.1	4.3	4.5
	Male	4.4	5.2	6.2
	Female	8.5	8.1	5.7
9	Chronic lower respiratory diseases	3.1	3.2	4.1
	Male	3.8	6.5	4.7
	Female	8.1	5.8	6.3
10	Diseases of the genitourinary system	3.8	4.5	4.0
	Male	4.2	3.1	3.6
	Female	5.2	6.5	7.3
9. Top 5 notifiable diseases (%)				
<i>The percentage distribution of the most common notifiable diseases in a given year</i>				
1	Skin sepsis	7.2	6.6	3.0
2	Diarrhoea	2.5	4.8	2.3
3	Pneumonia	2.1	4.1	1.7
4	Bronchitis	1.2	2.6	1.1
5	Influenza & Viral illness	1.4	2.4	1.0

10. Vaccine preventable conditions			
<i>The number of new cases for the following vaccine preventative conditions</i>			
Diphtheria	0	0	0
Hepatitis B	15	14	6
Measles	1	0	0
Mumps	5	1	0
Poliomyelitis	0	0	0
Tetanus	0	0	0
Tuberculosis (TB)	0	0	0
Whooping cough (Pertussis)	4	0	0
11. Maternal Deaths			
<i>The number of female deaths from any cause related to or aggravated by pregnancy or its management during pregnancy and child birth or within 42 days of termination of pregnancy</i>			
	0	0	0
12. Laboratory positive new cases for HIV/AIDS and STIs			
<i>The number of laboratory confirmed new cases for HIV/AIDS and STIs in a given year</i>			
HIV/AIDS	0	0	0
Gonorrhoea	6	2	1
Male	6	2	1
Female	0	0	0
Syphilis	0	0	1
Male	0	0	1
Female	0	0	0
Candidiasis	7	4	0
Male	0	0	0
Female	7	4	0
Trichomonas vaginalis	9	1	0
Male	2	0	0
Female	7	1	0
Chlamydia	39	28	30
Male	6	4	1
Female	33	24	29

13. Domestic Patient referrals (Total)	273	280	237
<i>The number of patients referred from the Outer Islands (Pa Enuā) to the main hospital in Rarotonga in a given year</i>			
Male	98	115	98
< 5	4	6	3
5-9	10	3	8
10-14	5	2	6
15-19	3	8	2
20-24	4	7	4
25-29	2	2	1
30-34	3	5	2
35-39	4	8	4
40-44	12	9	6
45-49	6	11	5
50-54	4	5	7
55-59	5	5	10
60-64	11	12	9
65-69	9	8	7
70+	16	24	24
Female	175	165	139
< 5	3	2	2
5-9	10	4	7
10-14	9	10	18
15-19	14	22	13
20-24	18	15	8
25-29	11	16	10
30-34	9	12	12
35-39	10	9	3
40-44	17	11	7
45-49	9	11	6
50-54	12	12	6
55-59	4	5	3
60-64	16	8	7
65-69	7	10	5
70+	26	18	32

14. International Patient referrals (Total)	134	116	155
<i>The number of patients referred from the main hospital in Rarotonga to New Zealand in a given year</i>			
Male	77	49	78
< 5	4	5	4
5-9	0	1	7
10-14	4	2	5
15-19	1	1	5
20-24	0	1	3
25-29	1	2	1
30-34	2	0	0
35-39	4	2	0
40-44	5	3	7
45-49	7	6	10
50-54	6	7	1
55-59	4	0	4
60-64	10	4	5
65-69	14	5	10
70+	15	10	16
Female	57	67	77
< 5	7	2	4
5-9	3	3	5
10-14	2	2	4
15-19	1	1	4
20-24	1	2	2
25-29	4	7	3
30-34	2	2	4
35-39	8	6	3
40-44	2	8	13
45-49	4	6	7
50-54	5	5	6
55-59	1	2	3
60-64	6	5	6
65-69	6	5	4
70+	5	11	9

15. Number of Health Professionals (per 1,000 population)			
<i>The number of selected health professionals per 1,000 population in a given year</i>			
Doctors	1.2	1.2	1.2
Nurses	6.3	6.2	6.1
Dentist	1.0	1.0	0.9
Allied health	1.5	1.5	1.5
16. Annual Inpatients (Total)			
<i>The number of patients admitted in the hospitals and health centers in a given year</i>			
Male	809	826	696
< 5	97	82	120
5-14	76	68	80
15-24	71	74	51
25-34	58	66	51
35-44	63	66	49
45-54	90	103	76
55-64	93	105	88
65-74	110	117	82
75+	151	145	99
Female	1,047	964	953
< 5	96	42	99
5-14	51	49	70
15-24	189	185	168
25-34	201	202	172
35-44	126	140	95
45-54	105	112	69
55-64	87	73	69
65-74	67	68	108
75+	125	93	103
17. Annual Outpatient Consultations (Total)			
<i>The number of patients seen in the outpatient department in a given year</i>			
Male	19,320	8,923	15,770
Female	18,586	8,664	15,631

18. Total Health Budget as a percentage of GDP		...	3.4	2.9
<i>The level of total expenditure on health expressed as a percentage of gross domestic product (GDP)</i>				
19. Mental Illness cases (Total)		37	11	29
Male		15	6	12
	< 19	1	0	0
	20-24	3	2	0
	25-29	1	0	2
	30-34	1	0	2
	35-39	2	0	0
	40-44	1	1	0
	45-49	1	0	2
	50-54	0	0	3
	55-59	1	2	0
	60+	4	1	3
Female		22	5	17
	< 19	4	0	2
	20-24	2	0	0
	25-29	1	0	2
	30-34	2	0	1
	35-39	2	1	3
	40-44	1	0	1
	45-49	0	0	2
	50-54	3	1	1
	55-59	3	0	1
	60+	4	3	4
20. Top 5 Causes of Dental Consultations (%)				
1	Extractions	20.7	23.0	23.9
2	Dentures	17.6	17.6	23.7
3	Fillings	28.3	25.4	23.4
4	Cleaning, prophylaxis, or polishing	11.6	11.1	10.7
5	General examinations or consultations	7.3	8.4	8.8