

Te Marae Ora Workforce Snapshot

As of March 2026

Source: TMO Kopu Tangata database



Total TMO Employees

379

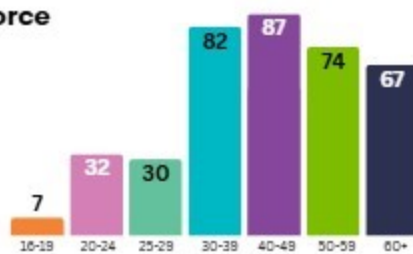
Over 300 health professionals covering a range of clinical and non-clinical services are employed with TMO.



Age of Workforce

22%

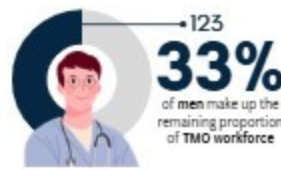
of TMO employees fall within the 40 to 49 age group, indicating a predominantly mature workforce.



Average age of TMO employees

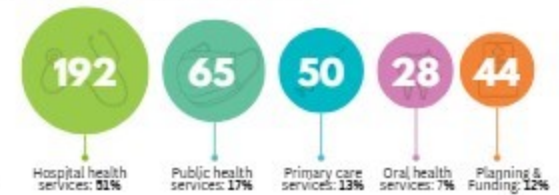
43yrs

Workforce Gender Profile



Workforce Directorates

TMO is structured into five main directorates:



Workforce Category

Non-clinical: Includes administrative support, infection prevention and control, receptionists, cooks, coordinators, security, maintenance and facilities, health promotion, health protection, public health coordinator

45% 172

Nursing: Includes enrolled nurses, registered nurses, nurse practitioners, charge nurses, nursing managers and Chief Nursing Officer

30% 115

Allied health: Includes dietitians, pharmacy, laboratory, radiology, rehabilitative care, EMT paramedics, biomedical, health protection, health promotion

11% 43

Dental: Includes dentists, dental technicians, dental therapists, dental paediatric, public health dental specialists, senior dentist, Oral health director

7% 27

Medical officers: Includes house officers, registrars, medical officers with specialist skills, Chief Medical Officer and Directors (clinical)

4% 18

Specialists: Includes paediatrician, gynaecologist, anaesthetist, surgeon

1% 4

Workforce Status

The TMO workforce is predominantly made up of **full-time staff (83%)**, with the remaining **17%** comprising **part-time, casual, or contracted workers**.



Workforce Location

Almost **79%** of TMO employees are based on Rarotonga, while the remaining **21%** is distributed amongst the pa enua.

